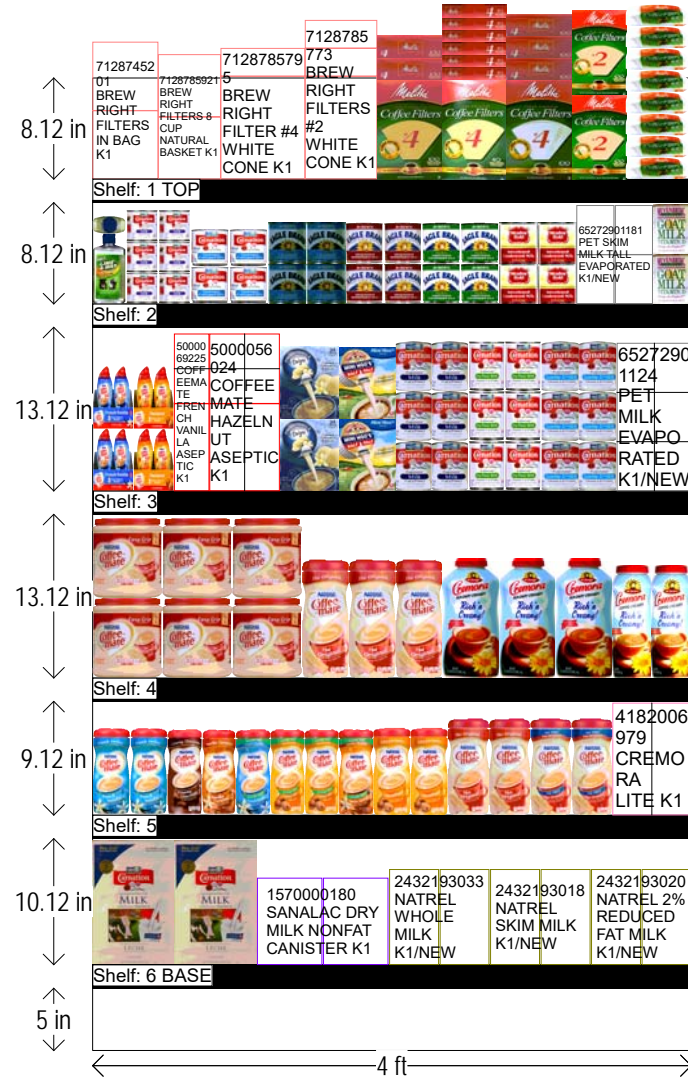


COMBINED COFFEE CREAMERS-FILTERS-CAN-DRY-UHT MILK 4 FT SECTION

HQ DeCA PLANOGRAM

CLASS 1 2



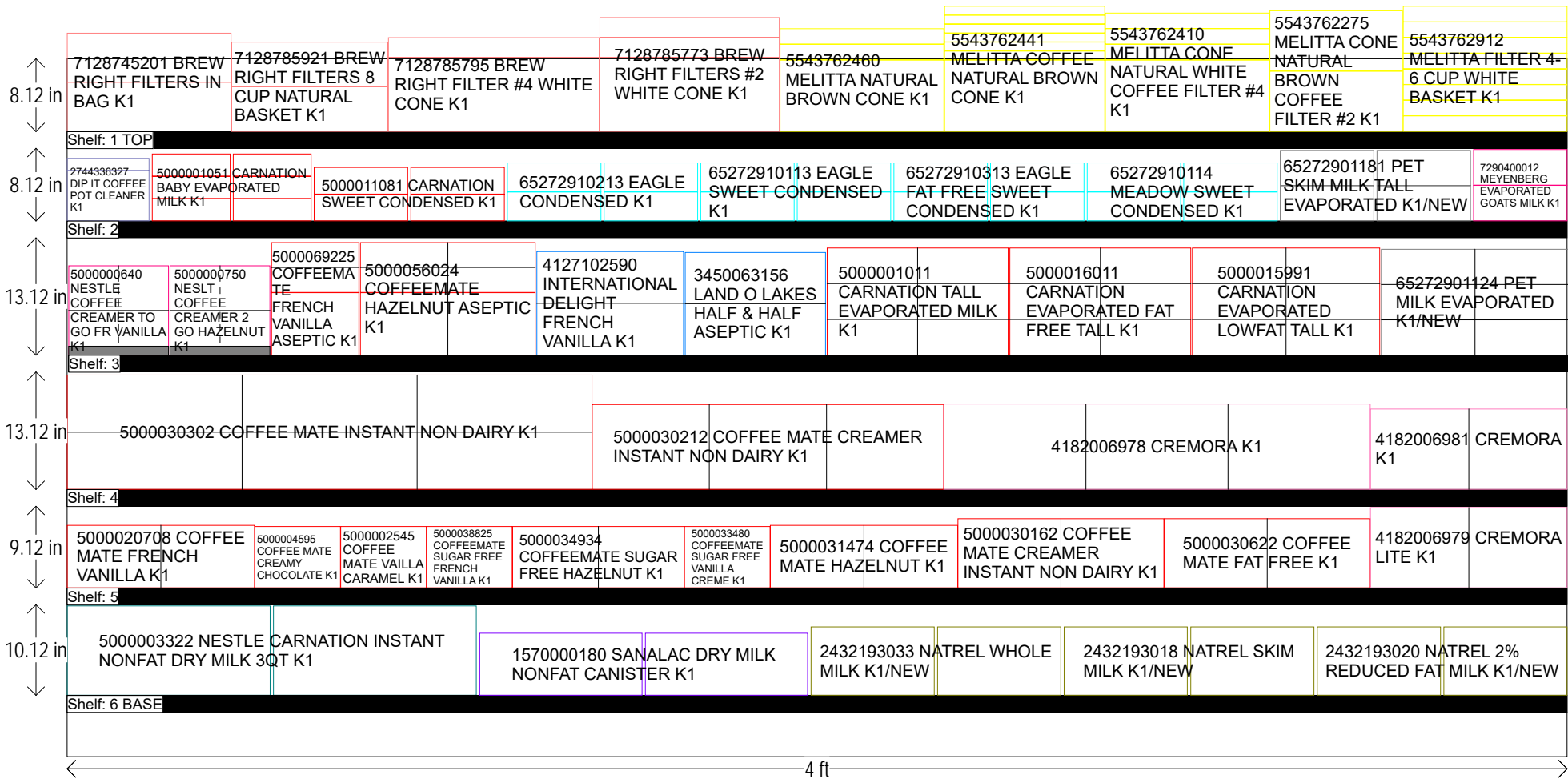
Left-right HQ DeCA/MBU PLANOGRAM APPROVED BY CATEGORY MANAGER DARRELL CLARY AND MERCHANDISING SPECAILST LISA OWENS.

8 AUGUST 2017 CAO MUST BE INVOLVED IN THE PROCESS ALONG WITH STORE MANAGEMENT APPROVAL. ITEM POSITIONS MUST NOT BE CHANGED AT ANY TIME.

COMBINED COFFEE CREAMERS-FILTERS-CAN-DRY-UHT MILK 4 FT SECTION

HQ DeCA PLANOGRAM

CLASS 1 2



Left-right HQ DeCA/MBU PLANOGRAM APPROVED BY CATEGORY MANAGER DARRELL CLARY AND MERCHANDISING SPECALIST LISA OWENS.

8 AUGUST 2017 CAO MUST BE INVOLVED IN THE PROCESS ALONG WITH STORE MANAGEMENT APPROVAL. ITEM POSITIONS MUST NOT BE CHANGED AT ANY TIME.

COMBINED COFFEE CREAMERS-FILTERS-CAN-DRY-UHT MILK 4 FT SECTION

SHELF:1 TOP		WIDTH:48 in	MERCH HEIGHT:14.00 in			DEPTH:22 in			SPACE AVAIL:0.12 in					
Locatio...	UPC	NAME	SIZE	UOM	NOF	RSL	CS/PK	PACKOUT	Cases	H	W	D	Orientation	Add Date
1	7128745201	BREW RIGHT FILTERS IN BAG	200.00	CT	1	K1	12	16	1.33	5.50 in	5.25 in	2.75 in	Front	
2	7128785921	BREW RIGHT FILTERS 8 CUP NATURAL BASK...	200.00	CT	1	K1	12	8	0.67	5.00 in	5.00 in	5.00 in	Front	
3	7128785795	BREW RIGHT FILTER #4 WHITE CONE	100.00	CT	1	K1	8	11	1.38	8.25 in	6.75 in	2.25 in	Front	
4	7128785773	BREW RIGHT FILTERS #2 WHITE CONE	100.00	CT	1	K1	8	13	1.63	8.25 in	5.75 in	2.25 in	Front	
5	5543762460	MELITTA NATURAL BROWN CONE	100.00	CT	1	K1	12	16	1.33	8.00 in	5.25 in	1.75 in	Front	
6	5543762441	MELITTA COFFEE NATURAL BROWN CONE	40.00	CT	1	K1	24	34	1.42	8.00 in	5.13 in	1.00 in	Front	
7	5543762410	MELITTA CONE NATURAL WHITE COFFEE FIL...	100.00	CT	1	K1	12	18	1.50	8.00 in	5.25 in	1.75 in	Front	
8	5543762275	MELITTA CONE NATURAL BROWN COFFEE FI...	100.00	CT	1	K1	12	18	1.50	6.75 in	4.25 in	2.25 in	Front	
9	5543762912	MELITTA FILTER 4-6 CUP WHITE BASKET	100.00	CT	1	K1	12	32	2.67	1.75 in	5.25 in	5.25 in	Front	

SHELF:2		WIDTH:48 in	MERCH HEIGHT:22.00 in			DEPTH:22 in			SPACE AVAIL:1.37 in					
Locatio...	UPC	NAME	SIZE	UOM	NOF	RSL	CS/PK	PACKOUT	Cases	H	W	D	Orientation	Add Date
1	2744336327	DIP IT COFFEE POT CLEANER	7.00	OZ	1	K1	8	18	2.25	5.63 in	2.63 in	1.38 in	Front	
2	5000001051	CARNATION BABY EVAPORATED MILK	5.00	OZ	2	K1	24	48	2.00	2.50 in	2.50 in	2.50 in	Front	
3	5000011081	CARNATION SWEET CONDENSED	14.00	OZ	2	K1	24	28	1.17	3.00 in	3.00 in	3.00 in	Front	
4	65272910213	EAGLE CONDENSED	14.00	OZ	2	K1	24	28	1.17	3.25 in	3.00 in	3.00 in	Front	
5	65272910113	EAGLE SWEET CONDENSED	14.00	OZ	2	K1	24	28	1.17	3.25 in	3.00 in	3.00 in	Front	
6	65272910313	EAGLE FAT FREE SWEET CONDENSED	14.00	OZ	2	K1	24	28	1.17	3.25 in	3.00 in	3.00 in	Front	
7	65272910114	MEADOW SWEET CONDENSED	14.00	OZ	2	K1	24	28	1.17	3.25 in	3.00 in	3.00 in	Front	
8	65272901181	PET SKIM MILK TALL EVAPORATED	12.00	OZ	2	K1/NEW	24	28	1.17	3.95 in	3.00 in	3.00 in	Front	6/2/2017
9	7290400012	MEYENBERG EVAPORATED GOATS MILK	12.00	OZ	1	K1	12	14	1.17	4.00 in	3.00 in	3.00 in	Front	

SHELF:3		WIDTH:48 in	MERCH HEIGHT:20.00 in			DEPTH:24 in			SPACE AVAIL:0.40 in					
Locatio...	UPC	NAME	SIZE	UOM	NOF	RSL	CS/PK	PACKOUT	Cases	H	W	D	Orientation	Add Date
1	5000000640	NESTLE COFFEE CREAMER TO GO FR VANILLA	3.00	OZ	1	K1	12	24	2.00	4.35 in	1.30 in	2.65 in	Front	
2	5000000750	NESLT COFFEE CREAMER 2 GO HAZELNUT	3.00	OZ	1	K1	12	24	2.00	4.35 in	1.30 in	2.65 in	Front	
3	5000069225	COFFEEMATE FRENCH VANILLA ASEPTIC	16.00	OZ	1	K1	12	14	1.17	7.00 in	2.80 in	2.80 in	Front	
4	5000056024	COFFEEMATE HAZELNUT ASEPTIC	16.00	OZ	2	K1	12	28	2.33	7.00 in	2.80 in	2.80 in	Front	
5	4127102590	INTERNATIONAL DELIGHT FRENCH VANILLA	24.00	CT	1	K1	6	16	2.67	5.80 in	4.70 in	2.80 in	Front	
6	3450063156	LAND O LAKES HALF & HALF ASEPTIC	24.00	CT	1	K1	6	20	3.33	5.75 in	4.50 in	2.38 in	Front	
7	5000001011	CARNATION TALL EVAPORATED MILK	12.00	OZ	2	K1	24	48	2.00	4.00 in	2.90 in	2.90 in	Front	
8	5000016011	CARNATION EVAPORATED FAT FREE TALL	12.00	OZ	2	K1	24	48	2.00	4.00 in	2.90 in	2.90 in	Front	
9	5000015991	CARNATION EVAPORATED LOWFAT TALL	12.00	OZ	2	K1	24	48	2.00	4.00 in	3.00 in	3.00 in	Front	
10	65272901124	PET MILK EVAPORATED	12.00	OZ	2	K1/NEW	24	48	2.00	3.95 in	3.00 in	3.00 in	Front	6/2/2017

SHELF:4		WIDTH:48 in	MERCH HEIGHT:20.00 in			DEPTH:24 in			SPACE AVAIL:0.00 in					
Locatio...	UPC	NAME	SIZE	UOM	NOF	RSL	CS/PK	PACKOUT	Cases	H	W	D	Orientation	Add Date
1	5000030302	COFFEE MATE INSTANT NON DAIRY	35.30	OZ	3	K1	6	24	4.00	6.40 in	5.60 in	5.60 in	Front	
2	5000030212	COFFEE MATE CREAMER INSTANT NON DAIRY	22.00	OZ	3	K1	12	18	1.50	9.50 in	3.75 in	3.75 in	Front	
3	4182006978	CREMORA	35.30	OZ	3	K1	12	15	1.25	9.56 in	4.55 in	4.55 in	Front	
4	4182006981	CREMORA	16.00	OZ	2	K1	12	14	1.17	9.00 in	3.15 in	3.25 in	Front	

SHELF:5		WIDTH:48 in	MERCH HEIGHT:22.00 in			DEPTH:24 in			SPACE AVAIL:0.00 in					
Locatio...	UPC	NAME	SIZE	UOM	NOF	RSL	CS/PK	PACKOUT	Cases	H	W	D	Orientation	Add Date
1	5000020708	COFFEE MATE FRENCH VANILLA	15.00	OZ	2	K1	6	16	2.67	7.00 in	3.00 in	3.00 in	Front	
2	5000004595	COFFEE MATE CREAMY CHOCOLATE	15.00	OZ	1	K1	6	8	1.33	6.88 in	2.75 in	2.75 in	Front	
3	5000002545	COFFEE MATE VAILLA CARAMEL	15.00	OZ	1	K1	6	8	1.33	6.88 in	2.75 in	2.75 in	Front	
4	5000038825	COFFEEMATE SUGAR FREE FRENCH VANILLA	10.20	OZ	1	K1	6	8	1.33	6.88 in	2.75 in	2.75 in	Front	
5	5000034934	COFFEEMATE SUGAR FREE HAZELNUT	10.20	OZ	2	K1	6	16	2.67	6.88 in	2.75 in	2.75 in	Front	
6	5000033480	COFFEEMATE SUGAR FREE VANILLA CREME	10.20	OZ	1	K1	6	8	1.33	6.88 in	2.75 in	2.75 in	Front	
7	5000031474	COFFEE MATE HAZELNUT	15.00	OZ	2	K1	6	16	2.67	7.00 in	3.00 in	3.00 in	Front	
8	5000030162	COFFEE MATE CREAMER INSTANT NON DAIRY	16.00	OZ	2	K1	12	14	1.17	7.75 in	3.30 in	3.30 in	Front	
9	5000030622	COFFEE MATE FAT FREE	16.00	OZ	2	K1	12	14	1.17	7.75 in	3.30 in	3.30 in	Front	
10	4182006979	CREMORA LITE	16.00	OZ	2	K1	12	14	1.17	9.00 in	3.15 in	3.25 in	Front	

COMBINED COFFEE CREAMERS-FILTERS-CAN-DRY-UHT MILK 4 FT SECTION

SHELF:6 BASE		WIDTH:48 in		MERCH HEIGHT:15.00 in			DEPTH:26 in			SPACE AVAIL:0.90 in				
Locatio...	UPC	NAME	SIZE	UOM	NOF	RSL	CS/PK	PACKOUT	Cases	H	W	D	Orientation	Add Date
1	5000003322	NESTLE CARNATION INSTANT NONFAT DRY ...	9.60OZ		2	K1	12	26	2.17	10.00 in	6.50 in	2.00 in	Front	
2	1570000180	SANALAC DRY MILK NONFAT CANISTER	32.00OZ		2	K1	6	10	1.67	6.96 in	5.20 in	5.20 in	Front	
3	2432193033	NATREL WHOLE MILK	32.00OZ		2	K1/NEW	12	22	1.83	7.65 in	3.95 in	2.32 in	Front	5/18/2017
4	2432193018	NATREL SKIM MILK	32.00OZ		2	K1/NEW	12	22	1.83	7.65 in	3.95 in	2.32 in	Front	5/18/2017
5	2432193020	NATREL 2% REDUCED FAT MILK	32.00OZ		2	K1/NEW	12	22	1.83	7.65 in	3.95 in	2.32 in	Front	5/18/2017