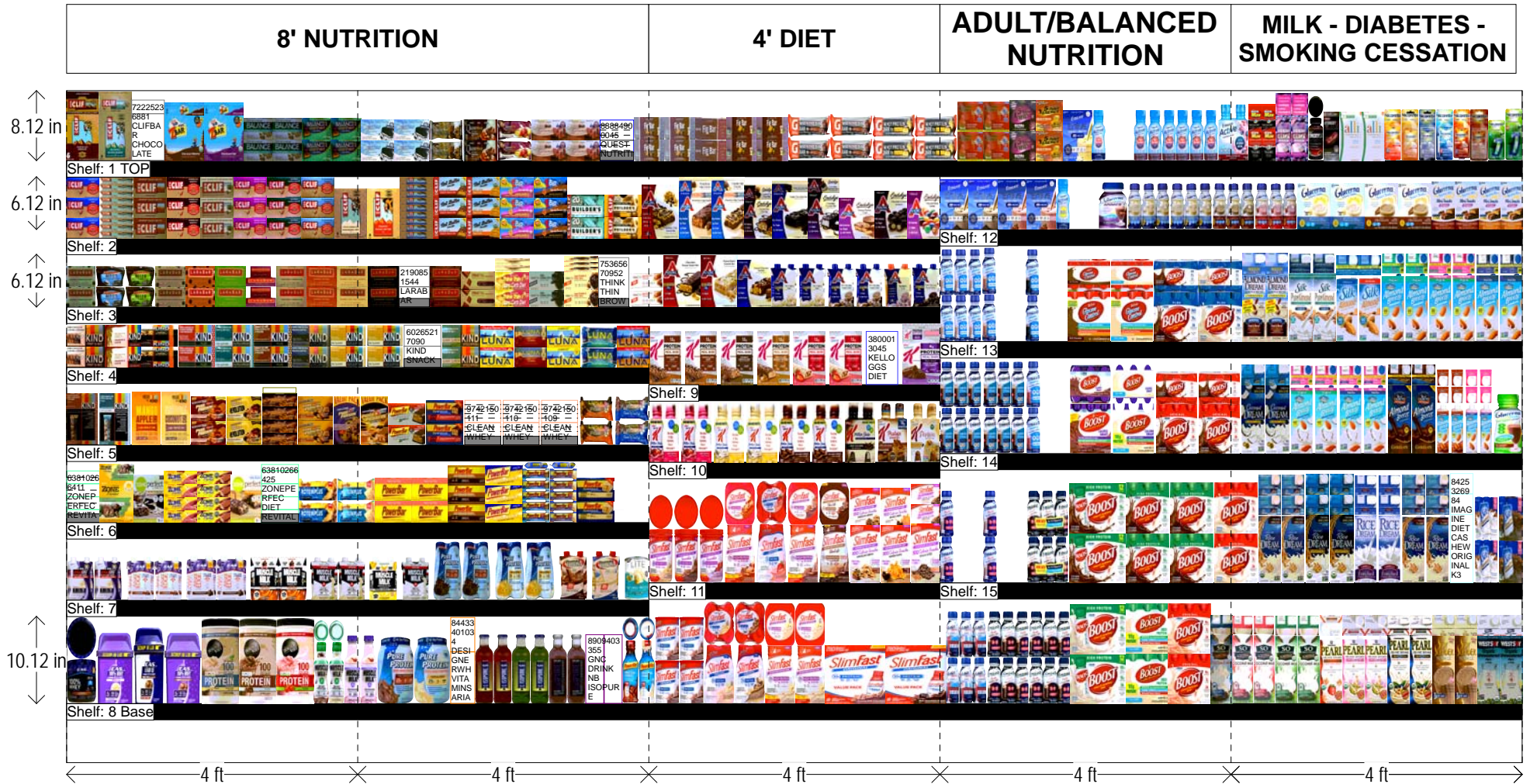


NUTRITIONAL / DIET / ADULT / FOODS 20 FT. SECTION

HQ DeCA PLANOGRAM

CLASS 3 4 5

UPDATED PLAN



Left-right

HQ DeCA/MBU PLANOGRAM APPROVED BY CATEGORY MANAGER LARUE SMITH

13 JULY 2017

THIS IS A FACING SPECIFIC PLANOGRAM. FACINGS MAY BE ADJUSTED TO ACCOMMODATE NEW AND REGIONAL ITEMS BASED ON 1.01 CASE PACKOUT. ANY ITEM ABOVE STORE CLASS MUST BE PLACED IN SPACE ALLOCATED TO SAME BRAND.

Adult Nutritional
Diet-Health-K3-4-
5.psa

NUTRITIONAL / DIET / ADULT / FOODS 20 FT. SECTION

HQ DeCA PLANOGRAM

CLASS 3 4 5

UPDATED PLAN

8.12 in

10.12 in

8' NUTRITION															4' DIET										ADULT/BALANCED NUTRITION										MILK - DIABETES - SMOKING CESSATION																			
Shelf: 1 TOP															Shelf: 12										Shelf: 13										Shelf: 14																			
Shelf: 2															Shelf: 9										Shelf: 10										Shelf: 11										Shelf: 15									
Shelf: 3															Shelf: 8 Base										Shelf: 7										Shelf: 6										Shelf: 5									
Shelf: 4															Shelf: 4										Shelf: 3										Shelf: 2										Shelf: 1									
Shelf: 5															Shelf: 3										Shelf: 2										Shelf: 1										Shelf: 0									
Shelf: 6															Shelf: 2										Shelf: 1										Shelf: 0										Shelf: -1									
Shelf: 7															Shelf: 1										Shelf: 0										Shelf: -1										Shelf: -2									
Shelf: 8 Base															Shelf: 0										Shelf: -1										Shelf: -2										Shelf: -3									

Left-right HQ DeCA/MBU PLANOGRAM APPROVED BY CATEGORY MANAGER LARUE SMITH

13 JULY 2017 THIS IS A FACING SPECIFIC PLANOGRAM. FACINGS MAY BE ADJUSTED TO ACCOMMODATE NEW AND REGIONAL ITEMS BASED ON 1.01 CASE PACKOUT. ANY ITEM ABOVE STORE CLASS MUST BE PLACED IN SPACE ALLOCATED TO SAME BRAND.

Adult Nutritional Diet-Health-K3-4-5.psa

NUTRITIONAL / DIET / ADULT / FOODS 20 FT. SECTION

SHELF:1 TOP			WIDTH:240 in	MERCH HEIGHT:8.00 in	DEPTH:24 in	SPACE AVAIL:3.85 in									
Loc...	UPC	Brand	NAME	SIZE	UOM	NOF	RSL	CS/PK	PACKOUT	Cases	H	W	D	Orientation	Add Date
1	72225266006	CLIF	CHOCOLATE BROWNIE BAR	6.00CT		1	K3	6	14	2.33	5.68 in	5.25 in	2.25 in	Front	
2	72225266103	CLIFBAR	OATMEAL RAISIN WALNUT BAR	6.00CT		1	K3	6	14	2.33	5.68 in	5.25 in	2.25 in	Front	
3	72225236881	CLIFBAR	CHOCOLATE PB NUT BUTTER BAR	4.00CT		1	K3	6	18	3.00	5.43 in	5.43 in	1.61 in	Front	
4	72225219203	CLIFZBAR	NUTRI BAR CHOCOLATE BROWNI...	7.62OZ		1	K1	12	20	1.67	5.25 in	6.37 in	1.50 in	Front	
5	72225219204	CLIFZBAR	NUTRI BAR CHOCOLATE CHIP 4	7.62OZ		1	K1	12	20	1.67	5.25 in	6.37 in	1.50 in	Front	
6	75004900080	BALANCE	NUTRI BAR YOGURT HNY PNUT	1.76OZ		2	K1	48	100	2.08	2.00 in	5.25 in	0.75 in	Front	
7	75004900149	BALANCE	NUTRI BAR CHOC MINT	1.76OZ		2	K3	48	100	2.08	2.00 in	5.25 in	0.75 in	Front	
8	88884900000	QUEST	NUTRITIONAL COOKIES CREAM B...	2.12OZ		2	K3	12	144	12.00	1.75 in	5.63 in	0.50 in	Front	
9	88884900023	QUEST	NUTRITIONAL DBL CHOC CHNK B...	2.12OZ		1	K3	12	72	6.00	1.75 in	5.63 in	0.50 in	Front	
10	88884900043	QUEST	NUTRITIONAL CINNAMON ROLL B...	2.12OZ		1	K3	12	72	6.00	1.75 in	5.63 in	0.50 in	Front	
11	88884900021	QUEST	NUTRITIONAL WHT CHOC RSPBR ...	2.12OZ		1	K3	12	72	6.00	1.75 in	5.63 in	0.50 in	Front	
12	88884900001	QUEST	NUTRITIONAL CHOC CHIP COOKI...	2.12OZ		2	K3	12	144	12.00	0.50 in	5.63 in	1.75 in	Front	
13	88884900045	QUEST	NUTRITIONAL CHOC PNT BTT BAR	2.12OZ		1	K3	12	72	6.00	0.50 in	5.63 in	1.75 in	Front	
14	4749511290	NATURESBAK	FIG BAR BLUEBERRY	2.00OZ		2	K3	12	96	8.00	2.50 in	5.00 in	1.00 in	Front	
15	4749501305	NATURESBAK	FIG BAR RASPBERRY	2.00OZ		1	K3	12	48	4.00	2.50 in	5.00 in	1.00 in	Front	
16	4749511780	NATURESBAK	FIG BAR FIG	2.00OZ		2	K3	12	96	8.00	2.50 in	5.00 in	1.00 in	Front	
17	5200010432	GATORADE	NUTRI BAR CHOC CHIP	2.80OZ		2	K3	12	96	8.00	2.69 in	6.94 in	8.13 in	Front	
18	5200010433	GATORADE	NUTRI BAR CHOC CARAMEL	2.80OZ		2	K3	12	96	8.00	2.69 in	6.94 in	8.13 in	Front	
19	71941050006	5HOUENERG	DRINK BERRY SPORT 6 PK	11.58OZ		2	K1	6	32	5.33	3.38 in	4.28 in	2.75 in	Front	
20	71941072006	5HOUENERG	DRINK GRAPE EX STRENGTH 6PK	11.58OZ		1	K1	6	16	2.67	3.50 in	4.25 in	2.88 in	Front	
21	71941075006	5HOUENERG	DRINK PEACH MANGO SUPP	11.58OZ		1	K3	6	16	2.67	3.50 in	4.25 in	2.88 in	Front	
22	7007464294	ENSURE	HEALTH FOODS ENLIVE VANILLA	32.00OZ		1	K3	4	5	1.25	5.81 in	4.63 in	4.63 in	Front	
23	7007464118	ENSURE	DIET HIGH PRTN VANILLA 6PK	48.00OZ		1	K3	4	5	1.25	5.86 in	6.90 in	4.60 in	Front	
24	7007464116	ENSURE	DIET HIGH PRTN CHOC 6PK	48.00OZ		2	K3	4	10	2.50	5.86 in	6.90 in	4.60 in	Front	
25	7007456501	ENSURE	DIET BLUEBERRY POME 4PK	40.00OZ		1	K3	3	4	1.33	6.50 in	4.90 in	4.90 in	Front	
26	87811401211	DEXATRIM	DIET SUPP MAX COMPLEX	60.00CT		2	K3	24	30	1.25	4.38 in	2.19 in	2.19 in	Front	
27	71036357284	IRWINNATUR	DIET SUPP 14 DAY ACAI CLEANSE	56.00CT		2	K3	4	24	6.00	5.12 in	2.60 in	2.69 in	Front	
28	63165660320	HYDROXYCUT	DIET HARDCORE CAPSULES	60.00CT		1	K1	12	13	1.08	5.00 in	2.49 in	2.49 in	Front	
29	63165660681	HYDROXYCUT	DIET SUPPRESESSANTS BLACK	60.00CT		1	K1	12	9	0.75	5.63 in	2.50 in	2.50 in	Front	
30	35310046925	ALI	VITAMINS REFILL PACK 120CT	120.00CT		2	K1	6	16	2.67	5.63 in	3.63 in	2.81 in	Front	
31	30766784914	NICORETTE	SMOKING CESS TRAP BLISTER 2...	20.00CT		1	K3	12	16	1.33	5.94 in	2.63 in	4.88 in	Front	
32	30766784934	NICORETTE	SMOKING CESS TRAP BLISTER 4...	20.00CT		1	K3	12	16	1.33	5.94 in	2.63 in	4.88 in	Front	
33	30766775054	NICORETTE	SMOKING CESS TRAP BLISTER 2...	20.00CT		1	K1	12	16	1.33	5.94 in	2.63 in	4.88 in	Front	
34	30766776054	NICORETTE	SMOKING CESS TRAP BLISTER 4...	20.00CT		1	K1	12	16	1.33	5.94 in	2.63 in	4.88 in	Front	
35	30766785924	NICORETTE	SMOKING CESS TRAP BLISTER 2...	20.00CT		1	K1	12	16	1.33	5.94 in	2.63 in	4.88 in	Front	
36	30766785974	NICORETTE	SMOKING CESS TRAP BLISTER 4...	20.00CT		1	K1	12	16	1.33	5.94 in	2.63 in	4.88 in	Front	
37	30766788057	NICORETTE	SMOKING CESSATION MINI 2MG	20.00CT		1	K1	12	84	7.00	4.70 in	4.50 in	1.10 in	Front	
38	30766788077	NICORETTE	SMOKING CESSATION MINI 4MG	20.00CT		1	K1	12	68	5.67	6.00 in	2.62 in	1.37 in	Front	

SHELF:2			WIDTH:144 in	MERCH HEIGHT:20.00 in	DEPTH:24 in	SPACE AVAIL:3.12 in									
Loc...	UPC	Brand	NAME	SIZE	UOM	NOF	RSL	CS/PK	PACKOUT	Cases	H	W	D	Orientation	Add Date
1	72225210090	CLIFBAR	HEALTH FOODS BAR CHOC CHIP	2.40OZ		1	K1	12	72	6.00	0.75 in	5.60 in	2.30 in	Front	
2	72225216030	CLIFBAR	NUTRI BAR COCONUT CC	2.40OZ		1	K3	12	72	6.00	0.75 in	5.50 in	2.25 in	Front	
3	72225210120	CLIFBAR	NUTRI BAR PB CRUNCHY	2.40OZ		1	K1	12	72	6.00	0.75 in	5.60 in	2.30 in	Front	
4	72225210180	CLIFBAR	CHOCOLATE BROWNIE BAR	2.40OZ		1	K1	12	84	7.00	5.00 in	3.00 in	0.75 in	Front	
5	72225216109	CLIFBAR	NUTRI BAR WHT CHOC MAC NUT	2.40OZ		1	K1	12	72	6.00	0.75 in	5.60 in	2.30 in	Front	
6	72225210130	CLIFBAR	NUTRI BAR CHOC CHP PB	2.40OZ		1	K1	12	72	6.00	2.30 in	5.60 in	0.75 in	Front	
7	72225250003	CLIFBAR	NURTI BAR OAT RAISIN WLNT	2.40OZ		1	K1	12	72	6.00	0.75 in	5.60 in	2.30 in	Front	
8	72225210260	CLIFBAR	HEALTH FOODS BAR BLUBRRY C...	2.40OZ		1	K3	12	84	7.00	5.00 in	3.00 in	0.75 in	Front	
9	72225266076	CLIFBAR	WHITE CHOC MACADAMIA NUT	14.40OZ		1	K3	6	10	1.67	5.68 in	5.25 in	2.25 in	Front	
10	72225266008	CLIFBAR	NUTRI BAR CRUNCHY PNUT BUTT...	14.40OZ		1	K3	9	10	1.11	5.68 in	5.25 in	2.25 in	Front	
11	72225266004	CLIFBAR	NUTRI BAR CHOCOLATE CHIP	14.40OZ		1	K1	9	72	8.00	0.75 in	5.50 in	2.30 in	Front	
12	72225226801	CLIFBAR	CHOCOLATE PB NUT BUTTER BA...	1.76OZ		1	K3	12	72	6.00	0.75 in	5.00 in	2.50 in	Front	
13	72225226803	CLIFBAR	PEANUT BUTTER NUT BUTTER BAR	1.76OZ		1	K3	12	72	6.00	0.75 in	5.00 in	2.50 in	Front	
14	72225219414	CLIFBAR	HEALTH FOODS BAR KIDS CH CHP	1.27OZ		1	K3	18	72	4.00	0.75 in	5.50 in	2.30 in	Front	

NUTRITIONAL / DIET / ADULT / FOODS 20 FT. SECTION

15	72225219413	CLIFBAR	NUTRI BAR KIDS BROWNIE	1.27OZ	1	K3	18	72	4.00	0.75 in	5.50 in	2.30 in	Front	
16	72225260144	CLIFBAR	DIET BAR CHOCOLATE MINT	2.40OZ	1	K3	12	48	4.00	2.50 in	6.00 in	8.81 in	Front	
17	72225260141	CLIFBAR	NUTRI BAR PEANUT BUTTER 09	2.40OZ	1	K3	12	48	4.00	2.50 in	6.00 in	8.81 in	Front	
18	63748004506	ATKINS	DIET BAR CHOC CHP GRANOLA	5.00PK	1	K1	6	14	2.33	6.13 in	6.00 in	1.63 in	Front	
19	63748005502	ATKINS	DIET BAR DAY BRK PBTR CRSP	6.00OZ	1	K3	6	18	3.00	5.44 in	5.31 in	1.63 in	Front	
20	63748005503	ATKINS	DIET BAR DAY BRK CHOC CHP CR...	6.00OZ	1	K1	6	18	3.00	5.44 in	5.31 in	1.63 in	Front	
21	63748007502	ATKINS	DIET BAR CARAMEL NUT CHEW 5...	5.00PK	1	K1	6	18	3.00	4.44 in	4.48 in	1.74 in	Front	
22	63748003540	ATKINS	DIET TRIPLE CHOCOLATE BAR	5.00CT	1	K3	6	23	3.83	5.37 in	5.75 in	1.25 in	Front	
23	63748007506	ATKINS	DIET BAR ENDULGE CHOC COCO...	6.00OZ	1	K1	6	17	2.83	5.25 in	4.94 in	1.75 in	Front	
24	63748007705	ATKINS	DIET CANDIES PB CUPS 5PK	6.00OZ	1	K3	6	9	1.50	4.63 in	5.75 in	2.63 in	Front	
25	63748007056	ATKINS	DIET CANDIES CHOC ALMONDS 5...	5.00OZ	1	K3	4	10	2.50	5.44 in	5.32 in	2.25 in	Front	
26	63748007575	ATKINS	DIET CANDIES CHOC PEANUT 5PK	6.00OZ	1	K3	4	10	2.50	5.44 in	5.32 in	2.25 in	Front	

SHELF:3			WIDTH:144 in	MERCH HEIGHT:14.00 in	DEPTH:24 in			SPACE AVAIL:3.34 in							
Loc...	UPC	Brand	NAME	SIZE	UOM	NOF	RSL	CS/PK	PACKOUT	Cases	H	W	D	Orientation	Add Date
1	2190850897	LARABAR	DIET COCONUT CHOC CHIP	1.60OZ	1	K3	16	60	60	3.75	8.15 in	5.00 in	2.40 in	Front	
2	2190847301	LARABAR	DIET BITES CHOC MACAROON	5.30OZ	1	K3	6	16	16	2.67	6.00 in	6.00 in	2.00 in	Front	
3	2190847299	LARABAR	DIET BITES MINT CHOC TRUFFLE	5.30OZ	1	K3	6	16	16	2.67	6.00 in	6.00 in	2.00 in	Front	
4	2190850937	LARABAR	NUTRI BAR CHOC CHP CKY DOUGH	1.60OZ	1	K3	64	64	64	1.00	1.25 in	5.00 in	0.50 in	Front	
5	2190850935	LARABAR	NUTRI BAR PB CHOC CHIP	1.60OZ	1	K1	64	64	64	1.00	1.25 in	5.00 in	0.50 in	Front	
6	2190850927	LARABAR	NUTRI BAR APPLE PIE	1.60OZ	1	K1	64	64	64	1.00	2.37 in	5.00 in	8.12 in	Front	
7	2190850924	LARABAR	NUTRI BAR CHERRY	1.70OZ	1	K1	64	64	64	1.00	2.37 in	5.00 in	8.12 in	Front	
8	2190850919	LARABAR	NUTRI BAR COCONUT CREAM PIE	1.70OZ	1	K1	64	64	64	1.00	2.37 in	5.00 in	8.12 in	Front	
9	2190850925	LARABAR	NUTRI BAR CASHEW COOKIE	1.70OZ	1	K3	64	64	64	1.00	2.37 in	5.00 in	8.12 in	Front	
10	2190850916	LARABAR	NUTRI BAR COOKIE PEANUT BUT...	1.70OZ	1	K1	64	64	64	1.00	2.37 in	5.00 in	8.12 in	Front	
11	2190850737	LARABAR	DIET LB B BERRY MUF CADDY	1.60OZ	1	K3	64	64	64	1.00	2.37 in	5.00 in	8.12 in	Front	
12	2190851544	LARABAR	LEMON BAR	1.60OZ	1	K3/NEW	64	64	64	1.00	1.25 in	5.00 in	0.20 in	Front	7/1/2017
13	2190850936	LARABAR	BROWNIE CHOC CHIP SNACK	1.60OZ	1	K3	64	64	64	1.00	1.95 in	4.75 in	0.50 in	Front	
14	75365670127	THINKTHIN	NUTRI BAR BRNE CRUNCH PROT...	2.10OZ	1	K3	10	8	8	0.80	2.05 in	5.55 in	6.00 in	Front	
15	75365670120	THINKTHIN	NUTRI BAR CREMY PNT BTR PRO...	2.10OZ	1	K1	10	86	86	8.60	2.05 in	5.45 in	0.75 in	Front	
16	75365670121	THINKTHIN	DIET BAR PROTEIN CHOC FDGE	2.10OZ	1	K3	10	8	8	0.80	2.05 in	5.60 in	6.00 in	Front	
17	75365671093	THINKTHIN	DIET CHOC ALMND BRW LN PROT...	2.10OZ	1	K3	10	113	113	11.30	2.05 in	5.55 in	0.60 in	Front	
18	75365670952	THINKTHIN	BROWNIE CRUNCH PROTEIN BARS	5.00CT	1	K3	6	14	14	2.33	5.75 in	5.00 in	1.61 in	Front	
19	75365671096	THINKTHIN	SALTED CARAMEL LEAN PRTN BA...	1.44OZ	1	K3	10	8	8	0.80	2.05 in	5.55 in	6.00 in	Front	
20	63748002502	ATKINS	DIET BAR ADVTG CHOC PBTR	10.50OZ	1	K1	6	14	14	2.33	6.03 in	5.94 in	1.63 in	Front	
21	63748004504	ATKINS	DIET BAR PB GRANOLA	5.00PK	1	K1	6	14	14	2.33	6.03 in	5.94 in	1.63 in	Front	
22	63748002553	ATKINS	DIET BAR CHOC NUT ROLL	5.00PK	1	K1	6	11	11	1.83	5.42 in	5.31 in	2.13 in	Front	
23	63748006504	ATKINS	BEVERAGE VAN SHAKE RTD 4PK	44.00OZ	2	K1	6	10	10	1.67	5.00 in	4.55 in	4.45 in	Front	
24	63748006501	ATKINS	BEVERAGE RTD MLK CHOC DELI...	11.00OZ	2	K1	6	10	10	1.67	5.00 in	4.55 in	4.45 in	Front	
25	63748006507	ATKINS	BEVERAGE STRAWBERRY	11.00OZ	1	K1	6	5	5	0.83	5.00 in	4.55 in	4.45 in	Front	
26	63748006510	ATKINS	BEVERAGE RTD SHAKE DRK CHOC	4.00PK	1	K1	6	5	5	0.83	5.00 in	4.55 in	4.45 in	Front	

SHELF:4			WIDTH:96 in	MERCH HEIGHT:15.00 in	DEPTH:26 in			SPACE AVAIL:3.31 in							
Loc...	UPC	Brand	NAME	SIZE	UOM	NOF	RSL	CS/PK	PACKOUT	Cases	H	W	D	Orientation	Add Date
1	60265219977	KIND	HEALTH FOODS DRK CHOC ALM ...	1.40OZ	1	K3	12	6	6	0.50	1.50 in	5.95 in	5.00 in	Front	
2	60265217011	KIND	HLTH FD BAR CRNBRY ALMD	1.40OZ	1	K1	12	96	96	8.00	0.60 in	6.09 in	1.43 in	Front	
3	60265217008	KIND	HEALTH FOODS BAR ALMND COC...	1.40OZ	1	K1	12	96	96	8.00	0.60 in	6.09 in	1.43 in	Front	
4	60265217050	KIND	HEALTH FOODS BAR DRK CHOC ...	1.40OZ	1	K1	12	72	72	6.00	0.60 in	6.09 in	1.43 in	Front	
5	60265217651	KIND	HEALTH BAR DK CHOC NUTS N SS	1.40OZ	1	K1	12	72	72	6.00	1.50 in	5.95 in	1.50 in	Front	
6	60265217056	KIND	OTB HEALTH B PB DRK CHO PR 06	1.40OZ	1	K3	12	6	6	0.50	1.50 in	5.95 in	5.00 in	Front	
7	60265217059	KIND	HEALTH BAR DRK CHOC MCHA AL	1.40OZ	1	K3	12	6	6	0.50	1.50 in	5.95 in	5.00 in	Front	
8	60265217030	KIND	HEALTHY SNK CRML ALMD SEA S...	1.40OZ	2	K1	12	96	96	8.00	2.40 in	6.00 in	0.80 in	Front	
9	60265217090	KIND	SNACK BAR MPL GLZD PECAN SE...	1.40OZ	1	K3	12	6	6	0.50	1.50 in	5.95 in	5.00 in	Front	
10	60265219978	KINDSNACKS	SNACK BAR DRK CHOC ALMND MI...	1.40OZ	1	K3	12	6	6	0.50	1.50 in	5.95 in	5.00 in	Front	
11	72225210410	LUNA	NUTRI BAR PPRMNT STICK	1.69OZ	1	K1	15	60	60	4.00	2.40 in	5.40 in	10.75 in	Front	
12	72225210340	LUNA	NUTRI BAR SMORES	1.69OZ	1	K3	15	60	60	4.00	2.38 in	5.19 in	10.56 in	Front	
13	72225210330	LUNA	DIET BAR LEMON ZEST	1.69OZ	1	K3	15	60	60	4.00	2.44 in	5.25 in	10.63 in	Front	
14	72225210069	LUNA	NUTRI BAR CHOC COCONUT	1.69OZ	1	K1	15	60	60	4.00	2.38 in	5.19 in	10.56 in	Front	

NUTRITIONAL / DIET / ADULT / FOODS 20 FT. SECTION

15	72225210310	LUNA	DIET BAR CHOC W NUTS	1.69OZ	1	K1	15	60	4.00	2.40 in	5.40 in	10.75 in	Front	
----	-------------	------	----------------------	--------	---	----	----	----	------	---------	---------	----------	-------	--

SHELF:5		WIDTH:96 in		MERCH HEIGHT:15.00 in			DEPTH:26 in			SPACE AVAIL:5.87 in					
Loc...	UPC	Brand	NAME	SIZE	UOM	NOF	RSL	CS/PK	PACKOUT	Cases	H	W	D	Orientation	Add Date
1	60265217165	KIND	HEALTH FDS P Nut BTR DK CHO P...	5.60OZ		1	K3	12	16	1.33	6.00 in	5.06 in	1.59 in	Front	
2	60265217168	KIND	HEALTH FDS DK CHO NUTS N SE...	5.60OZ		1	K3	12	16	1.33	6.00 in	5.06 in	1.59 in	Front	
3	60265224301	KIND	HF MANGO APPLE CHIA PRESSED	4.00CT		1	K3	6	18	3.00	6.19 in	4.50 in	1.38 in	Front	
4	60265224300	KIND	HF PAPPLE COCNUT CHIA PRESS...	4.00CT		1	K3	6	18	3.00	6.19 in	4.50 in	1.38 in	Front	
5	74982629762	PUREPROTEI	PR PRTN CHOC PNT BTR CRML ...	2.01OZ		1	K1	48	72	1.50	1.50 in	5.50 in	0.67 in	Front	
6	74982630674	WORLDWIDE	PR PRTN CHOC PNT CRML BAR	1.76OZ		1	K1	48	72	1.50	1.50 in	5.50 in	0.67 in	Front	
7	74982612644	PUREPROTEI	BAR CHOC CHIP CHEWY 50G	1.76OZ		1	K3	48	169	3.52	1.50 in	5.50 in	0.67 in	Front	
8	74982612648	PUREPROTEI	BAR CHOC PEANUT BTR 50G	1.76OZ		1	K1	48	72	1.50	1.50 in	5.50 in	0.67 in	Front	
9	74982600058	PUREPROTEI	BAR CHOC CHIP CHEWY 6PK	6.00OZ		1	K3	6	9	1.50	5.63 in	4.13 in	2.88 in	Front	
10	74982600056	PUREPROTEI	BAR CHOC PNT BTR 6PK	6.00OZ		1	K1	6	9	1.50	5.63 in	4.13 in	2.88 in	Front	
11	9742151000	POWERBAR	NUTRI BAR P Nut BTR CRML CRSP	1.98OZ		1	K3	15	90	6.00	2.00 in	5.96 in	8.48 in	Front	
12	9742148356	POWERBAR	NUTRI BAR CHOC PB PROTEIN PL...	2.17OZ		1	K1	15	90	6.00	1.25 in	5.00 in	0.75 in	Front	
13	9742150111	CLEANWHEY	WHITE FUDGE RASPBERRY	2.12OZ		1	K3	16	120	7.50	0.50 in	5.15 in	1.75 in	Front	
14	9742150110	CLEANWHEY	COOKIES AND CREAM	2.12OZ		1	K1	16	120	7.50	0.50 in	5.15 in	1.75 in	Front	
15	9742150109	CLEANWHEY	COOKIE DOUGH CHOCOLATE CHIP	2.12OZ		1	K3	16	120	7.50	0.50 in	5.15 in	1.75 in	Front	
16	72225223301	LUNAPROTEI	NUTRI BAR CHOC P Nut BTR	1.59OZ		1	K3	12	6	0.50	2.80 in	5.50 in	6.90 in	Front	
17	72225223303	LUNAPROTEI	DOUGH COOKIE CHOC CHIP	1.59OZ		1	K3	12	6	0.50	2.80 in	5.50 in	6.90 in	Front	

SHELF:6		WIDTH:96 in		MERCH HEIGHT:12.00 in			DEPTH:24 in			SPACE AVAIL:0.34 in					
Loc...	UPC	Brand	NAME	SIZE	UOM	NOF	RSL	CS/PK	PACKOUT	Cases	H	W	D	Orientation	Add Date
1	63810266411	ZONEPERFEC	REVITALIZE STBRY SHORTCAKE	1.00EA		1	K3/NEW	12	216	18.00	0.75 in	6.13 in	0.75 in	Front	3/31/2017
2	63810220475	ZONEPERFEC	DIET CHOC MINTS 5CT BARS	8.80OZ		1	K3	6	16	2.67	4.92 in	5.50 in	1.88 in	Front	
3	63810266035	ZONEPERFEC	DIET OATMEAL CHOC CHUNK	5.00CT		1	K3	6	12	2.00	5.50 in	5.00 in	1.88 in	Front	
4	63810220101	ZONEPERFEC	NUTRI BAR CHOC P Nut BTR	1.76OZ		1	K1	12	84	7.00	1.50 in	6.00 in	0.88 in	Front	
5	63810220309	ZONEPERFEC	NUTRI BAR FUDGE GRAHAM	1.76OZ		1	K1	12	84	7.00	1.50 in	6.00 in	0.88 in	Front	
6	63810263510	ZONEPERFEC	SALTED CARML BRWNIE BAR 5CT	1.58OZ		1	K3	6	12	2.00	5.50 in	5.00 in	1.88 in	Front	
7	63810266425	ZONEPERFEC	DIET REVITALIZE SLT CRM LATTE...	1.00CT		1	K3/NEW	36	5184	144.00	1.50 in	6.13 in	0.75 in	Front	3/31/2017
8	9742156010	PROTEINPLU	NUTRITIONAL CHOCOLATE PB	2.11OZ		1	K1	15	4	0.27	2.55 in	6.30 in	8.20 in	Front	
9	9742156020	PROTEINPLU	NUTRITIONAL LMN POPPY SD LB ...	2.11OZ		1	K1/NEW	15	4	0.27	2.55 in	6.30 in	8.20 in	Front	
10	9742100008	POWERBAR	NUTRI BAR P Nut BTR	2.30OZ		2	K1	12	96	8.00	2.00 in	5.96 in	8.48 in	Front	
11	9742100002	POWERBAR	NUTRI BAR CHOC	2.30OZ		1	K3	12	108	9.00	2.00 in	5.96 in	8.48 in	Front	
12	9742103003	POWERBAR	NUTRI BAR VANILLA CRISP	2.30OZ		1	K3	12	108	9.00	2.00 in	5.96 in	8.48 in	Front	
13	9742189075	POWERBAR	COOKIE PRTN PS MINT CHOC	2.29OZ		1	K3	15	179	11.93	1.25 in	4.50 in	0.75 in	Front	
14	9742192322	POWERBAR	COOKIE PRTN PS PEANUT BTR	2.29OZ		1	K3	15	179	11.93	1.25 in	4.50 in	0.75 in	Front	
15	9742137679	POWERBAR	NUTRI BAR VAN PROTEIN PLUS	2.17OZ		1	K1	15	60	4.00	1.25 in	5.00 in	0.75 in	Front	
16	9742151461	POWERBAR	DIET TRPL THRT PNB CARAMEL B...	1.75OZ		1	K3	15	60	4.00	1.35 in	4.00 in	0.75 in	Front	

SHELF:7		WIDTH:96 in		MERCH HEIGHT:10.00 in			DEPTH:26 in			SPACE AVAIL:8.42 in					
Loc...	UPC	Brand	NAME	SIZE	UOM	NOF	RSL	CS/PK	PACKOUT	Cases	H	W	D	Orientation	Add Date
1	79108330233	EAS	DIET BEV RTD VANILLA	44.00OZ		2	K1	3	10	3.33	5.03 in	4.56 in	4.60 in	Front	
2	79108330232	EAS	DIET BEV RTD MILK CHOCO	44.00OZ		2	K1	3	10	3.33	5.03 in	4.56 in	4.60 in	Front	
3	79108330437	EAS	DIET BEV RTD RICH DARK CHOCO	44.00OZ		2	K1	3	10	3.33	5.17 in	4.94 in	4.62 in	Front	
4	18053000081	MUSCLEMILK	HEALTH FOODS CYTO MM CHOC ...	44.00OZ		2	K1	3	10	3.33	5.00 in	4.50 in	4.50 in	Front	
5	18053000082	MUSCLEMILK	HEALTH FOODS CYTO MM VAN R...	44.00OZ		2	K3	3	10	3.33	5.00 in	4.50 in	4.50 in	Front	
6	18053000083	MUSCLEMILK	HEALTH FOODS CYTO MM BAN R...	44.00OZ		1	K3	3	5	1.67	5.00 in	4.50 in	4.50 in	Front	
7	18053000084	MUSCLEMILK	HEALTH FOODS CYTO MM CCRM ...	44.00OZ		1	K3	3	5	1.67	5.00 in	4.50 in	4.50 in	Front	
8	74982654513	PUREPROTEI	SHAKE 23G RICH CHOCOLATE	11.00OZ		2	K1	6	10	1.67	6.80 in	4.70 in	4.90 in	Front	
9	74982654514	PUREPROTEI	SHAKE VAN CREAM 23G	11.00OZ		2	K3	6	10	1.67	6.80 in	4.90 in	4.90 in	Front	
10	64384371448	PREMIERPRO	DIET SHAKE CHOCOLATE	4.00OZ		1	K3	3	6	2.00	5.70 in	4.63 in	4.31 in	Front	
11	64384371451	PREMIERPRO	DIET SHAKE VANILLA	4.00OZ		1	K3	3	6	2.00	5.70 in	4.63 in	4.31 in	Front	
12	84433401024	DESIGNERPR	PROTIEN LITE VANILLA CUP	9.03OZ		1	K3	3	6	2.00	5.13 in	4.00 in	4.00 in	Front	

SHELF:8 Base		WIDTH:240 in		MERCH HEIGHT:14.00 in			DEPTH:26 in			SPACE AVAIL:1.93 in					
Loc...	UPC	Brand	NAME	SIZE	UOM	NOF	RSL	CS/PK	PACKOUT	Cases	H	W	D	Orientation	Add Date

NUTRITIONAL / DIET / ADULT / FOODS 20 FT. SECTION

1	79108364982	EAS	NUTRITIONAL WHEY POWDER CH...	12.50OZ	1	K1	4	10	2.50	5.16 in	4.89 in	4.89 in	Front	
2	79108363478	EAS	DIET WHEY POWDER VANILLA	2.00LB	1	K3	2	4	2.00	8.18 in	6.10 in	6.10 in	Front	
3	79108363468	EAS	SPECIALTY FD POWER CHOCOLA...	1.70LB	1	K3	2	5	2.50	8.81 in	5.06 in	5.06 in	Front	
4	79108363476	EAS	EAS POWER 100% WHEY CHOCO...	2.00LB	1	K3/NEW	4	4	1.00	8.18 in	6.10 in	6.10 in	Front	4/19/2017
5	84433400133	GNC	SPORTS NUTRITION PROTEIN VA...	32.00OZ	1	K3	4	4	1.00	9.85 in	6.10 in	6.10 in	Front	
6	84433400131	GENERALNUT	DIET PWDR DESIGNER WHEY CH...	32.00OZ	1	K3	4	4	1.00	9.85 in	6.10 in	6.10 in	Front	
7	84433400137	GNC	DIET DRINK PROTEIN STRWBRRY	32.00OZ	1	K3	4	4	1.00	9.85 in	6.10 in	6.10 in	Front	
8	87606300755	CYTOSPORT	HEALTH FOOD MILK ORGNC CHOC	12.00OZ	1	K3	12	13	1.08	7.13 in	2.50 in	2.50 in	Front	
9	87606300758	CYTOSPORT	HEALTH FOOD MILK ORGNC VAN	12.00OZ	1	K3	12	13	1.08	7.13 in	2.50 in	2.50 in	Front	
10	87606300620	CYTOSPORT	HEALTH FOOD SMOOTHIE STRW ...	16.00OZ	2	K3	12	18	1.50	7.88 in	2.69 in	2.69 in	Front	
11	74982657946	PUREPROTEI	DIET PURE PRTN WHEY PWD CH...	1.75LB	1	K1	2	4	2.00	7.74 in	6.00 in	6.00 in	Front	
12	74982657948	PUREPROTEI	DIET PURE PRTN WHEY PWD VNL...	1.75LB	1	K1	2	4	2.00	7.74 in	6.00 in	6.00 in	Front	
13	84433401034	DESIGNERWH	VITAMINS ARIA VEGAN PRTN VANIL	12.00OZ	1	K3	3	10	3.33	6.00 in	4.00 in	4.00 in	Front	
14	8909403349	GNC	DRINK NB ISOPURE ALP PUNCH	20.00OZ	2	K3	12	16	1.33	8.00 in	3.00 in	3.00 in	Front	
15	8909403357	GNC	DRINK NB ISOPURE APPLE MELON	20.00OZ	2	K3	12	16	1.33	8.00 in	3.00 in	3.00 in	Front	
16	8909403353	GNC	DRINK NB ISOPURE GRAPE CRISP	20.00OZ	2	K3	12	16	1.33	8.00 in	3.00 in	3.00 in	Front	
17	8909403355	GNC	DRINK NB ISOPURE BLUE RASPB...	20.00OZ	2	K3/CHG	12	16	1.33	8.00 in	3.00 in	3.00 in	Front	7/12/2017
18	9742156042	POST	DIET SUPP PROTEIN CHOCO SHA...	14.00OZ	1	K3	12	12	1.00	7.35 in	2.65 in	2.65 in	Front	
19	9742156040	POST	DIET SUPP PROTEIN VANILL SHAKE	14.00OZ	1	K3	12	12	1.00	7.35 in	2.65 in	2.65 in	Front	
20	0834602652	SLIMFAST	BEVERAGE MILK CHOC PWDR OP...	12.80OZ	2	K1	3	24	8.00	5.02 in	4.00 in	4.01 in	Front	
21	0834674002	SLIMFAST	SPECIALTY FD RTD FRENCH VANIL...	11.00OZ	1	K1	4	8	2.00	6.85 in	5.00 in	5.00 in	Front	
22	0834674005	SLIMFAST	SPECIALTY FD RTD CAPPU DELIG...	11.00OZ	1	K1	4	8	2.00	6.85 in	5.00 in	5.00 in	Front	
23	0834674009	SLIMFAST	RTD VANILLA CREAM 4PK	11.00OZ	2	K1	3	16	5.33	6.72 in	4.91 in	4.91 in	Front	
24	0834678001	SLIMFAST	SPECIALTY FD RTD CRM MILK CH...	11.00OZ	1	K1	8	5	0.63	6.75 in	9.88 in	4.73 in	Front	
25	0834678007	SLIMFAST	SPECIALTY FD RTD CHOCO ROYA...	11.00OZ	1	K1	3	5	1.67	6.75 in	9.88 in	4.85 in	Front	
26	7007440718	ENSURE	HEALTH FOODS STRAWBERRY P...	48.00OZ	1	K1	4	10	2.50	5.34 in	6.84 in	4.57 in	Front	
27	7007440702	ENSURE	HEALTH FOODS CHOC PLUS DRINK	48.00OZ	2	K1	4	20	5.00	5.34 in	6.84 in	4.57 in	Front	
28	4167902200	NESTLE	HEALTH FD DRINK VAN HI 12PK	96.00OZ	1	K3	2	6	3.00	5.75 in	9.05 in	6.75 in	Front	
29	4167994166	NESTLE	HEALTH FOODS VANILLA HIPRO ...	48.00OZ	1	K1	4	12	3.00	5.79 in	6.96 in	3.72 in	Front	
30	4167967666	NESTLE	HEALTH FOODS STRAWBERRY D...	48.00OZ	1	K3	4	12	3.00	5.79 in	6.96 in	3.72 in	Front	
31	74447391234	SODELICIOU	DRINK VAN COCONUT MILK ASEPT	32.00OZ	1	K3	12	14	1.17	7.95 in	3.50 in	2.25 in	Front	
32	74447391231	SODELICIOU	DRINK COCONUT MILK ASEPT	32.00OZ	2	K3	12	28	2.33	7.95 in	3.50 in	2.25 in	Front	
33	74447391235	SODELICIOU	NATURAL ORGANIC ASEPT COCO...	32.00OZ	2	K3	12	28	2.33	7.89 in	3.67 in	2.32 in	Front	
34	4139006136	KIKKOMAN	SOYMILK ORGANIC ORIGINA	32.00OZ	1	K3	12	14	1.17	7.89 in	3.67 in	2.32 in	Front	
35	4139006156	KIKKOMAN	SOYMILK ORGANIC PEARL UNSWT	32.00OZ	2	K3	12	28	2.33	7.89 in	3.67 in	2.32 in	Front	
36	4139006140	KIKKOMAN	SOYMILK ORGANIC CRMY VANILLA	32.00OZ	2	K1	12	28	2.33	7.89 in	3.67 in	2.32 in	Front	
37	7487396442	WESTSOY	SOY DRINK CHOC SLENDER	32.00OZ	2	K3	12	28	2.33	7.89 in	3.67 in	2.32 in	Front	
38	7487396015	WESTSOY	SOY ORGANIC MILK	32.00OZ	2	K1	12	28	2.33	7.89 in	3.67 in	2.32 in	Front	

SHELF:9		WIDTH:48 in		MERCH HEIGHT:10.00 in			DEPTH:24 in			SPACE AVAIL:5.24 in					
Loc...	UPC	Brand	NAME	SIZE	UOM	NOF	RSL	CS/PK	PACKOUT	Cases	H	W	D	Orientation	Add Date
1	3800034390	KELLOGGS	DIET MEAL BARS MLTI PK CHOC CH	9.50OZ	2	K1	6	6	24	4.00	6.13 in	5.22 in	1.88 in	Front	
2	3800029179	KELLOGGS	DIET MEAL BARS MLTI PK DBL CHO	9.50OZ	1	K3	6	6	12	2.00	6.13 in	5.22 in	1.88 in	Front	
3	3800029172	KELLOGGS	DIET MEAL BARS MLTI PK CH PN B	9.50OZ	1	K1	6	6	12	2.00	6.13 in	5.22 in	1.88 in	Front	
4	3800029176	KELLOGGS	DIET MEAL BARS MLTI PK STRWB...	9.50OZ	2	K1	6	6	24	4.00	6.13 in	5.22 in	1.88 in	Front	
5	3800013045	KELLOGGS	DIET SPECIAL K CHCY MNT PRT ML	7.95OZ	1	K3	6	6	13	2.17	6.19 in	5.25 in	1.81 in	Front	
6	3800013047	KELLOGGS	PROTEIN BAR SPK CHCY BRNE P...	7.95OZ	1	K3/NEW	6	6	17	2.83	5.25 in	6.19 in	1.81 in	Front	5/1/2017

SHELF:10		WIDTH:48 in		MERCH HEIGHT:15.00 in			DEPTH:26 in			SPACE AVAIL:4.08 in					
Loc...	UPC	Brand	NAME	SIZE	UOM	NOF	RSL	CS/PK	PACKOUT	Cases	H	W	D	Orientation	Add Date
1	3800043198	KELLOGGS	BEV STRAWBERRY PRTN SHAKE ...	43.90OZ	2	K1	3	3	10	3.33	6.88 in	4.88 in	4.88 in	Front	
2	3800043257	KELLOGGS	BEV FR VANILLA PRTN SHAKE 4 PK	43.90OZ	2	K1	3	3	10	3.33	6.88 in	4.88 in	4.88 in	Front	
3	3800043204	KELLOGGS	BEV CHOC PROTEIN SHAKE 4 PK	43.90OZ	2	K1	3	3	10	3.33	6.88 in	4.88 in	4.88 in	Front	
4	3800052891	KELLOGGS	BEVERAGE SHAKE DARK CHOC 4...	43.90OZ	1	K3	3	3	5	1.67	6.88 in	4.88 in	4.88 in	Front	
5	3800078589	KELLOGGS	BEV DK CHOC MOC PRT SHAKE 4 ...	43.90OZ	1	K3	3	3	5	1.67	6.88 in	4.88 in	4.88 in	Front	
6	3800078587	KELLOGGS	DIET SPECIAL K VAN CAPP PROT	40.00OZ	1	K3	6	6	5	0.83	6.88 in	4.88 in	4.88 in	Front	

SHELF:11		WIDTH:48 in		MERCH HEIGHT:16.00 in			DEPTH:24 in			SPACE AVAIL:2.17 in				
----------	--	-------------	--	-----------------------	--	--	-------------	--	--	---------------------	--	--	--	--

NUTRITIONAL / DIET / ADULT / FOODS 20 FT. SECTION

Loc...	UPC	Brand	NAME	SIZE	UOM	NOF	RSL	CS/PK	PACKOUT	Cases	H	W	D	Orientation	Add Date
1	0834679002	SLIMFAST	DIET ADV POWDER FRNCH VANIL...	11.01OZ		1	K3	2	9	4.50	6.25 in	3.95 in	3.95 in	Front	
2	0834679001	SLIMFAST	DIET ADV POWDER MILK CHOC	11.01OZ		1	K3	2	9	4.50	6.25 in	3.95 in	3.95 in	Front	
3	0834679003	SLIMFAST	DIET YOGURT SMOOTHIE MX BER...	11.01OZ		1	K3	4	9	2.25	6.25 in	3.95 in	3.95 in	Front	
4	0834674010	SLIMFAST	RTD RICH CHOCO ROYALE 4PK	11.00OZ		1	K3	3	7	2.33	6.72 in	4.91 in	4.91 in	Front	
5	0834674006	SLIMFAST	DIET FD RTD STAWB N CREAM	11.00OZ		1	K3	4	7	1.75	6.85 in	5.00 in	5.00 in	Front	
6	0834674008	SLIMFAST	RTD CREAMY MILK CHOC 4PK	11.00OZ		1	K1	3	7	2.33	6.72 in	4.91 in	4.91 in	Front	
7	0834674050	SLIMFAST	DIET COFFEE MOCHA CAPP RTD	11.00OZ		1	K1	4	7	1.75	6.72 in	4.91 in	4.91 in	Front	
8	0834680004	SLIMFAST	DIET MINI CRISPS CINNA SWIRL	0.70OZ		1	K1	4	8	2.00	6.75 in	4.75 in	4.25 in	Front	
9	0834680201	SLIMFAST	DIET MESQUITE BBQ POP CRISPS	0.98OZ		1	K3	4	8	2.00	6.75 in	4.75 in	4.25 in	Front	
10	0834680009	SLIMFAST	DIET PRETZEL CHOCO SNACK BI...	5.00CT		1	K1	6	16	2.67	6.94 in	4.75 in	2.25 in	Front	

SHELF:12 WIDTH:96 in MERCH HEIGHT:10.00 in DEPTH:24 in SPACE AVAIL:2.70 in

Loc...	UPC	Brand	NAME	SIZE	UOM	NOF	RSL	CS/PK	PACKOUT	Cases	H	W	D	Orientation	Add Date
1	7007464297	ENSURE	HEALTH FOODS ENLIVE CHOCOL...	32.00OZ		2	K3	4	10	2.50	5.81 in	4.63 in	4.63 in	Front	
2	7007464292	ENSURE	HEALTH FOODS ENLIVE STRAWB...	32.00OZ		2	K3	4	10	2.50	5.81 in	4.63 in	4.63 in	Front	
3	7007464124	ENSURE	DIET ACTIVE LIGHT VAN 6PK	48.00OZ		1	K3	4	5	1.25	5.86 in	6.90 in	4.60 in	Front	
4	7007463000	GLUCERNA	HEALTH DRINK CHOC SHAKE	32.00CT		1	K3	4	5	1.25	5.44 in	4.62 in	4.62 in	Front	
5	7007457802	GLUCERNA	HEALTH FOODS SHAKE VANILLA	48.00OZ		2	K1	4	10	2.50	5.34 in	6.84 in	4.57 in	Front	
6	7007457805	GLUCERNA	HEALTH FOODS SHAKE CHOCOL...	48.00OZ		1	K1	4	5	1.25	5.34 in	6.84 in	4.57 in	Front	
7	7007457808	GLUCERNA	HEALTH FOODS SHAKE STRAWB...	48.00OZ		1	K1	4	5	1.25	5.34 in	6.84 in	4.57 in	Front	
8	7007459857	GLUCERNA	HEALTH FOODS SHAKE SNACK V...	32.00OZ		2	K3	4	12	3.00	5.38 in	5.38 in	3.50 in	Front	
9	7007459860	GLUCERNA	HEALTH FOODS SHAKE SNACK C...	32.00OZ		2	K3	4	12	3.00	5.38 in	5.38 in	3.50 in	Front	
10	7007463032	GLUCERNA	HEALTH BAR MINI SNKS CHOC PB	6.00CT		2	K3	6	24	4.00	5.50 in	3.69 in	2.00 in	Front	
11	7007463029	GLUCERNA	HEALTH BAR MINI SNKS CHOC C...	6.00CT		2	K1	6	24	4.00	5.50 in	3.50 in	2.00 in	Front	

SHELF:13 WIDTH:96 in MERCH HEIGHT:11.00 in DEPTH:24 in SPACE AVAIL:4.08 in

Loc...	UPC	Brand	NAME	SIZE	UOM	NOF	RSL	CS/PK	PACKOUT	Cases	H	W	D	Orientation	Add Date
1	7007440711	ENSURE	HEALTH FOODS VAN DRINK	48.00OZ		1	K1	4	10	2.50	5.34 in	6.78 in	4.57 in	Front	
2	7007451785	ENSURE	HEALTH FOODS DRINK BTRR PCAN	48.00OZ		1	K3	4	10	2.50	5.44 in	6.88 in	4.50 in	Front	
3	7007453807	ENSURE	HEALTH FOODS DRK CHOC 6PK	48.00OZ		1	K3	4	10	2.50	5.34 in	6.78 in	4.57 in	Front	
4	4167915791	NESTLE	HEALTH FOODS GLCSE CNTRL C...	48.00OZ		1	K3	4	10	2.50	5.81 in	6.87 in	3.75 in	Front	
5	4167915781	NESTLE	HEALTH FOODS GLCSE CNTRL V...	48.00OZ		1	K3	4	10	2.50	5.81 in	6.87 in	3.75 in	Front	
6	4167993266	NESTLE	HEALTH FOODS CHOC PLUS DRINK	48.00OZ		1	K1	4	10	2.50	5.79 in	7.09 in	3.72 in	Front	
7	4167993166	NESTLE	HEALTH FOODS VANILLA PLUS D...	48.00OZ		1	K3	4	10	2.50	5.79 in	7.09 in	3.72 in	Front	
8	8425326832	IMAGINE	SOYMILK ALMOND DREAM UNSWT	32.00OZ		2	K3	12	26	2.17	7.94 in	3.60 in	2.30 in	Front	
9	2529300169	SILK	DIET SUPP PURE ALMOND VAN U...	32.00OZ		2	K3	6	26	4.33	7.89 in	3.67 in	2.32 in	Front	
10	2529300124	SILK	SOYMILK ALMND VAN ASEPTIC	32.00OZ		1	K1	6	13	2.17	7.75 in	3.50 in	2.25 in	Front	
11	2529300125	SILK	SOYMILK ALMND ORIG ASEPTIC	32.00OZ		1	K1	6	13	2.17	7.75 in	3.50 in	2.25 in	Front	
12	4157006827	BLUEDIAMON	ALMOND BREEZE ORIGINAL	32.00OZ		2	K3	12	26	2.17	7.89 in	3.67 in	2.32 in	Front	
13	4157005413	BLUEDIAMON	ALMOND BREEZE UNSWEETN	32.00OZ		2	K1	12	26	2.17	7.89 in	3.67 in	2.32 in	Front	
14	4157006836	BLUEDIAMON	ALMOND BREEZE VANILLA	32.00OZ		2	K3	12	26	2.17	7.89 in	3.67 in	2.32 in	Front	

SHELF:14 WIDTH:96 in MERCH HEIGHT:12.00 in DEPTH:24 in SPACE AVAIL:6.87 in

Loc...	UPC	Brand	NAME	SIZE	UOM	NOF	RSL	CS/PK	PACKOUT	Cases	H	W	D	Orientation	Add Date
1	7007440701	ENSURE	HEALTH FOODS CHOC DRINK	48.00OZ		2	K1	4	20	5.00	5.34 in	6.78 in	4.57 in	Front	
2	7007440705	ENSURE	WIC HEALTH DRINK STRAWB	48.00OZ		1	K1	4	10	2.50	5.34 in	6.78 in	4.57 in	Front	
3	4167947731	NESTLE	HEALTH FOODS DRINK CHOC 6PK	8.00OZ		1	K3	4	9	2.25	5.80 in	6.75 in	4.50 in	Front	
4	4167947337	NESTLE	HEALTH FOODS DRINK VAN 6PK	8.00OZ		1	K3	4	9	2.25	5.80 in	6.75 in	4.50 in	Front	
5	4167967566	NESTLE	HEALTH FOODS CHOC DRINK	48.00OZ		2	K1	4	20	5.00	5.79 in	6.69 in	3.72 in	Front	
6	8425322571	IMAGINE	DIET DRINK UNSWEETENED	32.00OZ		2	K3	12	26	2.17	7.95 in	3.66 in	2.30 in	Front	
7	4157008976	BLUEDIAMON	ALMOND COCONUT UNSWEET	32.00OZ		2	K3	12	26	2.17	7.95 in	3.66 in	2.30 in	Front	
8	4157008977	BLUEDIAMON	ALMOND COCONUT UNSWEET VA...	32.00OZ		2	K3	12	26	2.17	7.95 in	3.66 in	2.30 in	Front	
9	4157006837	BLUEDIAMON	ALMOND BREEZE CHOCOLATE	32.00OZ		2	K3	12	26	2.17	7.95 in	3.66 in	2.30 in	Front	
10	4157011092	ALMONDBREE	DIET SUPPLEMENTS CHOCOLATE	8.00OZ		2	K3	12	40	3.33	5.75 in	2.00 in	2.00 in	Front	
11	4157011094	ALMONDBREE	DIET SUPPLEMENTS UNSW VANIL...	8.00OZ		2	K3	12	40	3.33	5.75 in	2.00 in	2.00 in	Front	
12	7007462887	GLUCERNA	DIET BEVERAGE HNGR SMRT CH...	60.00OZ		1	K3	2	3	1.50	6.88 in	4.63 in	7.00 in	Front	

NUTRITIONAL / DIET / ADULT / FOODS 20 FT. SECTION

SHELF:15		WIDTH:96 in		MERCH HEIGHT:16.00 in			DEPTH:24 in			SPACE AVAIL:5.06 in					
Loc...	UPC	Brand	NAME	SIZE	UOM	NOF	RSL	CS/PK	PACKOUT	Cases	H	W	D	Orientation	Add Date
1	7007440707	ENSURE	HEALTH FOODS VAN PLUS DRINK	48.00OZ		2	K1	4	20	5.00	5.34 in	6.84 in	4.57 in	Front	
2	7007453810	ENSURE	HEALTH FOODS PLUS DRK CHOC	48.00OZ		1	K3	4	10	2.50	5.34 in	6.84 in	4.57 in	Front	
3	4167902193	NESTLE	HEALTH FD DRINK CHOC HI 12PK	96.00OZ		1	K1	2	6	3.00	5.75 in	9.05 in	6.75 in	Front	
4	4167994066	NESTLE	HEALTH FOODS CHOC HIPRO DRI...	48.00OZ		2	K1	4	24	6.00	5.79 in	6.96 in	3.72 in	Front	
5	4167967466	NESTLE	HEALTH FOODS VANILLA DRINK	48.00OZ		1	K1	4	12	3.00	5.79 in	6.96 in	3.72 in	Front	
6	8425322215	IMAGINE	DRINK DIET RICE DREAM ORGANIC	32.00OZ		2	K1	12	32	2.67	7.89 in	3.60 in	2.30 in	Front	
7	8425322211	IMAGINE	DIET DRINK ORIG UNSWT ENRICH...	32.00OZ		2	K3	12	32	2.67	7.89 in	3.75 in	2.38 in	Front	
8	8425322216	IMAGINE	DIET DRNK VAN ENRICH RTD	32.00OZ		2	K1	12	32	2.67	7.89 in	3.60 in	2.30 in	Front	
9	8425322214	IMAGINE	DIET DRINK VANILLA	32.00OZ		2	K3	12	32	2.67	7.89 in	3.67 in	2.32 in	Front	
10	8425326984	IMAGINE	DIET CASHEW ORIGINAL	32.00OZ		1	K3	6	16	2.67	7.94 in	3.75 in	2.38 in	Front	
11	2529300273	SILK	DIET PURE ALMND DRINK 3 6PK	8.00OZ		1	K3	3	6	2.00	5.00 in	3.75 in	6.50 in	Front	
12	2529300272	SILK	DIET PURE ALMND DRINK CHOC 3...	8.00OZ		1	K3	3	6	2.00	5.00 in	3.75 in	6.50 in	Front	