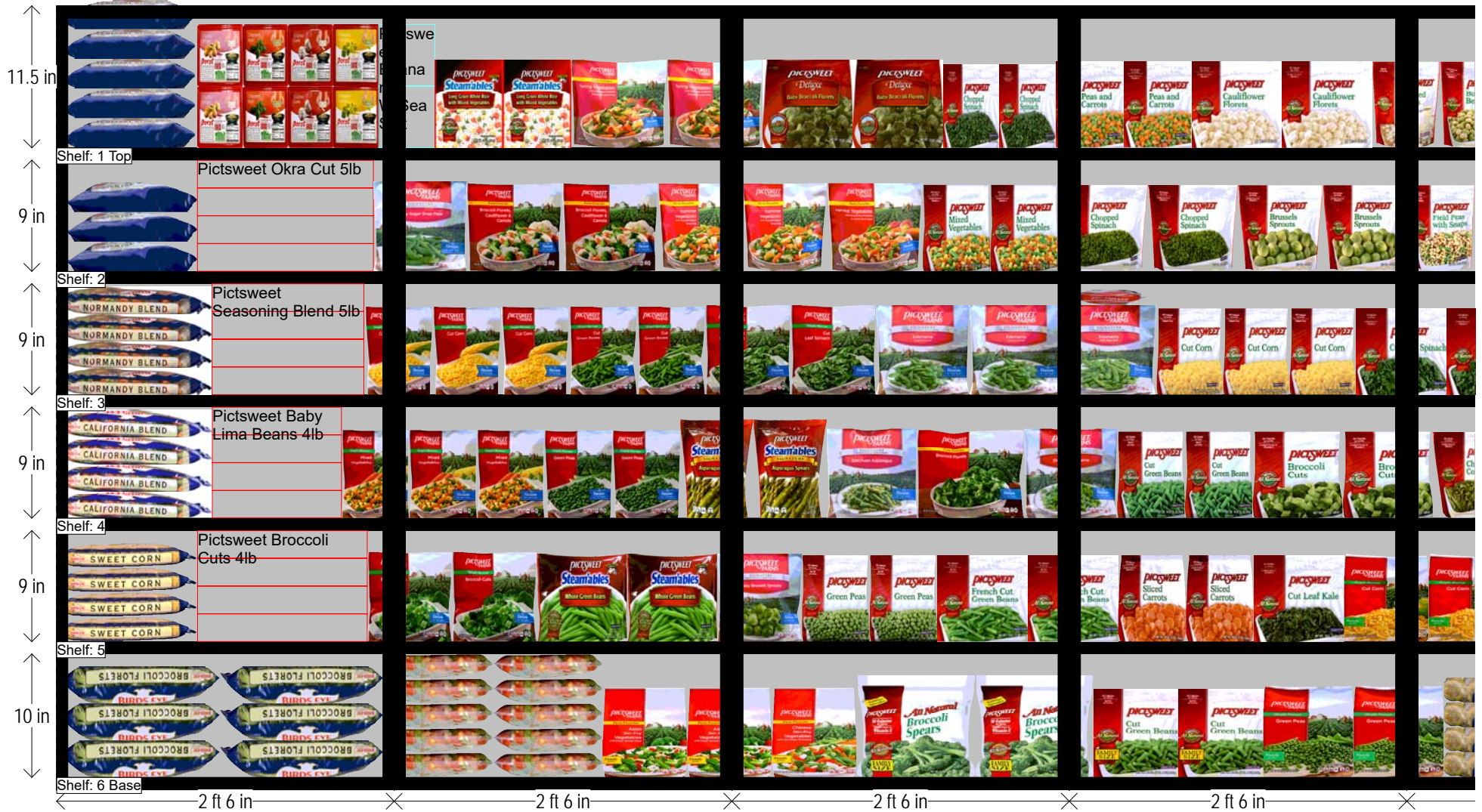


FROZEN VEGETABLES - 14 Doors NW SW Regions

HQ DeCA Planogram

CLASS 4 STORES



N/A

HQ DeCA/MBU PLANOGRAM APPROVED BY JAMES TAYLOR

20 OCTOBER 2016

FACINGS MAY BE ADJUSTED TO ACCOMMODATE LOCAL AND REGIONAL ITEMS (END OF LOW). FACINGS MAY BE ADJUSTED TO MEET CUSTOMER DEMAND - CAO MUST BE INVOLVED IN THE PROCESS ALONG WITH STORE MANAGEMENT APPROVAL. ITEM POSITIONS MUST NOT BE CHANGED AT ANY TIME.

Frozen Vegetables
POG.psa

FROZEN VEGETABLES - 14 Doors NW SW Regions

HQ DeCA Planogram

CLASS 4 STORES



N/A

HQ DeCA/MBU PLANOGRAM APPROVED BY JAMES TAYLOR

20 OCTOBER 2016

FACINGS MAY BE ADJUSTED TO ACCOMMODATE LOCAL AND REGIONAL ITEMS (END OF LOW). FACINGS MAY BE ADJUSTED TO MEET CUSTOMER DEMAND - CAO MUST BE INVOLVED IN THE PROCESS ALONG WITH STORE MANAGEMENT APPROVAL. ITEM POSITIONS MUST NOT BE CHANGED AT ANY TIME.

Frozen
Vegetables
POG.psa

FROZEN VEGETABLES - 14 Doors NW SW Regions

HQ DeCA Planogram

CLASS 4 STORES



N/A

HQ DeCA/MBU PLANOGRAM APPROVED BY JAMES TAYLOR

20 OCTOBER 2016

FACINGS MAY BE ADJUSTED TO ACCOMMODATE LOCAL AND REGIONAL ITEMS (END OF LOW). FACINGS MAY BE ADJUSTED TO MEET CUSTOMER DEMAND - CAO MUST BE INVOLVED IN THE PROCESS ALONG WITH STORE MANAGEMENT APPROVAL. ITEM POSITIONS MUST NOT BE CHANGED AT ANY TIME.

Frozen Vegetables POG.psa

FROZEN VEGETABLES - 14 Doors NW SW Regions

HQ DeCA Planogram

CLASS 4 STORES



N/A

HQ DeCA/MBU PLANOGRAM APPROVED BY JAMES TAYLOR

20 OCTOBER 2016

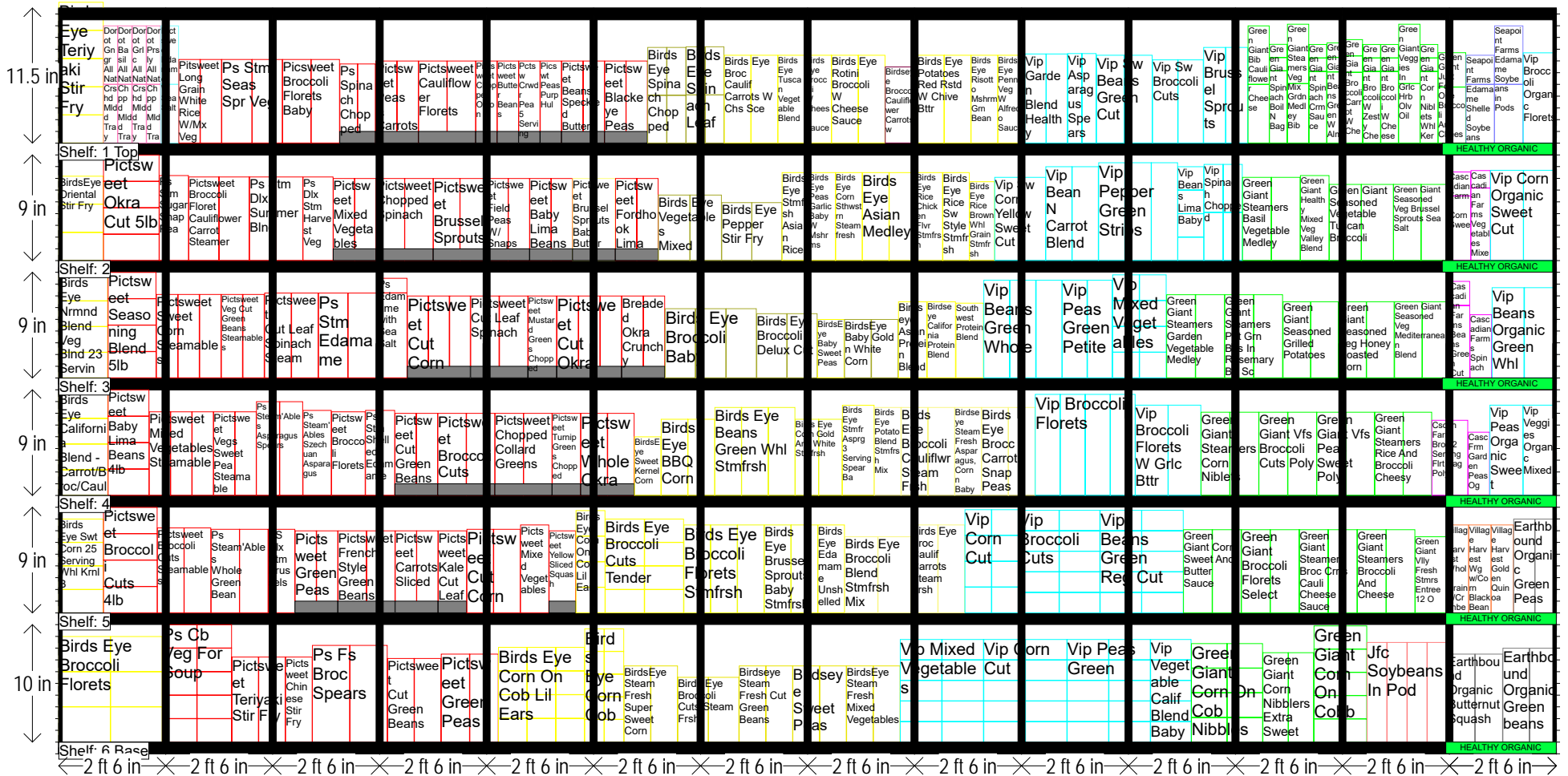
FACINGS MAY BE ADJUSTED TO ACCOMMODATE LOCAL AND REGIONAL ITEMS (END OF LOW). FACINGS MAY BE ADJUSTED TO MEET CUSTOMER DEMAND - CAO MUST BE INVOLVED IN THE PROCESS ALONG WITH STORE MANAGEMENT APPROVAL. ITEM POSITIONS MUST NOT BE CHANGED AT ANY TIME.

Frozen Vegetables POG.psa

FROZEN VEGETABLES - 14 Doors NW SW Regions

HQ DeCA Planogram

CLASS 4 STORES



N/A HQ DeCA/MBU PLANOGRAM APPROVED BY JAMES TAYLOR

20 OCTOBER 2016 FACINGS MAY BE ADJUSTED TO ACCOMMODATE LOCAL AND REGIONAL ITEMS (END OF LOW). FACINGS MAY BE ADJUSTED TO MEET CUSTOMER DEMAND - CAO MUST BE INVOLVED IN THE PROCESS ALONG WITH STORE MANAGEMENT APPROVAL. ITEM POSITIONS MUST NOT BE CHANGED AT ANY TIME.

Frozen Vegetables POG.psa

FROZEN VEGETABLES - 14 Doors NW SW Regions

SHELF:1 Top		WIDTH:420 in		MERCH HEIGHT:12.00 in			DEPTH:22 in			SPACE AVAIL:1.55 in				
Locatio...	UPC	NAME	SIZE	UOM	NOF	RSL	CS/PK	PACKOUT	Cases	H	W	D	Orientation	Add Date
1	1450002270	BirdsEye Teriyaki Stir Fry	52.20OZ		1	K3	6	10	1.67	8.00 in	12.50 in	2.40 in	Base	
2	79437610014	Dorot Gngr All Nat Crshd Mldd Tray 2.5 O	2.50OZ		1	K3	16	44	2.75	5.00 in	4.00 in	1.00 in	Front	
3	79437610011	Dorot Basil All Nat Chppd Mldd Tray 2.5	2.50OZ		1	K4	16	44	2.75	5.00 in	4.00 in	1.00 in	Front	
4	79437610003	Dorot Grlc All Nat Crshd Mldd Tray 2.8 O	2.80OZ		1	K3	16	44	2.75	5.00 in	4.00 in	1.00 in	Front	
5	79437610012	Dorot Prsly All Nat Chppd Mldd Tray 2.5	2.50OZ		1	K4	16	44	2.75	5.00 in	4.00 in	1.00 in	Front	
6	7056097551	Pictsweet Edaname W Sea Salt	4.50OZ		1	K3	12	20	1.67	5.00 in	5.00 in	2.13 in	Front	4/26/2017
7	7056097913	Pictsweet Long Grain White Rice W/Mx Veg	10.00OZ		2	K3	8	30	3.75	7.13 in	6.00 in	1.38 in	Front	
8	7056097826	Ps Stm Seas Spr Veg	12.00OZ		2	K3	12	32	2.67	7.13 in	8.50 in	1.30 in	Front	
9	7056090965	Picsweet Broccoli Florets Baby	10.00OZ		2	K1	6	24	4.00	7.13 in	8.00 in	1.83 in	Front	
10	7056087269	Ps Spinach Chopped	10.00OZ		2	K1	10	40	4.00	7.13 in	7.50 in	1.30 in	Front	
11	7056096287	Pictsweet Peas & Carrots	16.00OZ		2	K1	7	28	4.00	7.40 in	6.00 in	1.80 in	Front	
12	7056091855	Pictsweet Cauliflower Florets	16.00OZ		2	K1	6	24	4.00	7.40 in	7.75 in	2.44 in	Front	
13	7056096609	Pictsweet Chopped Onion	12.00OZ		1	K2	9	16	1.78	7.13 in	7.50 in	1.30 in	Front	
14	7056083745	Pictsweet Butter Beans	16.00OZ		1	K2	8	16	2.00	7.40 in	6.00 in	1.80 in	Front	4/26/2017
15	7056081406	Pctsw Crwdr Pea 5 Serving Whl Bag Plstc	12.00OZ		1	K4	8	16	2.00	7.00 in	6.00 in	1.30 in	Front	
16	7056082236	Picswt Peas Purp Hul	16.00OZ		1	K2	9	16	1.78	7.40 in	6.00 in	1.80 in	Front	
17	7056083871	Pictsweet Beans Speckled Butter	16.00OZ		2	K2	9	32	3.56	7.40 in	6.76 in	2.44 in	Front	
18	7056081141	Pictsweet Blackeye Peas	16.00OZ		2	K2	8	32	4.00	7.40 in	6.00 in	1.80 in	Front	
19	1450000190	Birds Eye Spinach Chopped	10.00OZ		2	K1	24	60	2.50	4.08 in	5.37 in	1.40 in	Front	
20	1450000189	Birds Eye Spinach Leaf	10.00OZ		2	K1	24	56	2.33	4.11 in	5.33 in	1.54 in	Front	
21	1450002388	Birds Eye Broc Caulif Carrots W Chs Sce	10.80OZ		2	K4	8	24	3.00	7.50 in	7.50 in	1.83 in	Front	
22	1450001442	Birds Eye Tuscan Vegetable Blend	10.00OZ		1	K3	10	14	1.40	7.50 in	7.50 in	1.47 in	Front	
23	1450002345	Birds Eye Broccoli W Cheese Sauce	10.80OZ		1	K3	8	12	1.50	7.50 in	7.50 in	1.83 in	Front	
24	1450002377	Birds Eye Rotini Broccoli W Cheese Sauce	10.80OZ		2	K4	8	24	3.00	7.50 in	7.50 in	1.83 in	Front	
25	1450001388	Birdseye Broccoli Cauliflower Carrots w Cheese S...	12.00OZ		1	K4	8	14	1.75	6.50 in	9.00 in	1.50 in	Front	4/26/2017
26	1450002347	Birds Eye Potatoes Red Rstd W Chive Bttr	10.80OZ		2	K3	8	24	3.00	7.50 in	7.50 in	1.83 in	Front	
27	1450001428	Birds Eye Risotto Mshrm Grn Bean	10.00OZ		1	K3	10	14	1.40	7.50 in	7.50 in	1.47 in	Front	
28	1450002374	Birds Eye Penne Veg W Alfredo Sauce	10.80OZ		1	K3	8	12	1.50	7.50 in	7.50 in	1.83 in	Front	
29	7007705011	Vip Garden Blend Healthy	14.00OZ		2	K3	12	20	1.67	7.60 in	6.00 in	2.20 in	Front	
30	7007702004	Vip Asparagus Spears	10.00OZ		2	K1	12	20	1.67	7.64 in	4.00 in	2.10 in	Front	
31	7007706508	Vip Sw Beans Green Cut	12.00OZ		2	K3	12	22	1.83	7.50 in	7.84 in	2.00 in	Front	
32	7007706528	Vip Sw Broccoli Cuts	12.00OZ		2	K1	12	20	1.67	7.10 in	7.14 in	2.20 in	Front	
33	7007701032	Vip Brussel Sprouts	14.00OZ		2	K1	12	20	1.67	8.16 in	6.20 in	2.20 in	Front	
34	2000000199	Green Giant Bib Cauliflower Cheese	10.00OZ		1	K3	12	32	2.67	5.00 in	6.00 in	1.37 in	Front	
35	2000017681	Green Giant Spinach Boil N Bag	10.00OZ		1	K1	12	25	2.08	6.16 in	5.00 in	1.13 in	Front	
36	2000016361	Green Giant Steamers Veg Mix Grdn Medley Bib	8.00OZ		1	K3	12	30	2.50	5.07 in	6.03 in	1.43 in	Front	
37	2000000086	Green Giant Spinach Crm Sauce	10.00OZ		1	K3	12	25	2.08	6.11 in	5.00 in	1.15 in	Front	
38	2000012629	Green Giant Beans Green W Almonds	10.00OZ		1	K4	12	23	1.92	6.06 in	5.00 in	1.24 in	Front	
39	2000000124	Green Giant Broccoli Carrot W Cheese	10.00OZ		1	K3	12	21	1.75	6.03 in	5.03 in	1.40 in	Front	
40	2000012974	Green Giant Broccoli W Zesty Cheese	10.00OZ		1	K3	12	25	2.08	6.11 in	5.00 in	1.15 in	Front	
41	2000000180	Green Giant Broccoli W Cheese	10.00OZ		1	K1	12	25	2.08	6.11 in	5.00 in	1.15 in	Front	
42	2000019757	Green Giant Veggies In Grlc Hrb Olv Oil	7.00OZ		1	K3	12	30	2.50	5.07 in	6.03 in	1.43 in	Front	
43	2000000110	Green Giant Corn Niblets Whl Kernel Butter	10.00OZ		1	K3	12	25	2.08	6.11 in	5.00 in	1.15 in	Front	
44	2000017517	Green Giant Just For One Broccoli And Cheese Sce	17.00OZ		1	K2	8	11	1.38	4.77 in	7.77 in	2.94 in	Front	
45	71157572158	Seapoint Farms Edamame Shelled Soybeans	30.00OZ		1	K3	8	12	1.50	5.00 in	8.00 in	2.50 in	Front	
46	71157572157	Seapoint Farms Edamame Soybeans in Pods	30.00OZ		1	K3	8	16	2.00	5.00 in	8.00 in	2.50 in	Front	
47	7007706427	Vip Broccoli Organic Florets	21.00OZ		1	K1	6	12	2.00	7.70 in	9.33 in	1.80 in	Front	

SHELF:2		WIDTH:420 in		MERCH HEIGHT:10.00 in			DEPTH:22 in			SPACE AVAIL:0.57 in				
Locatio...	UPC	NAME	SIZE	UOM	NOF	RSL	CS/PK	PACKOUT	Cases	H	W	D	Orientation	Add Date
1	1450002268	BirdsEye Oriental Stir Fry	52.50OZ		1	K1	6	6	1.00	8.00 in	12.50 in	2.40 in	Base	
2	7056085640	Pictsweet Okra Cut 5lb	5.00LB		1	K1	6	8	1.33	10.00 in	15.65 in	2.25 in	Base	
3	7056097856	Ps Stm Sugar Snap Pea	11.00OZ		1	K3	12	17	1.42	7.25 in	8.25 in	1.25 in	Front	
4	7056097811	Pictsweet Broccoli Floret Cauliflower Carrot Stea...	12.00OZ		2	K2	7	28	4.00	7.13 in	8.50 in	1.57 in	Front	

FROZEN VEGETABLES - 14 Doors NW SW Regions

5	7056098001	Ps Stm Dlx Summer Blnd	12.00OZ	2	K2	12	32	2.67	7.13 in	7.50 in	1.30 in	Front	
6	7056097761	Ps Dlx Stm Harvest Veg	10.00OZ	1	K2	12	16	1.33	7.13 in	8.50 in	1.30 in	Front	
7	7056095088	Pictsweet Mixed Vegetables	16.00OZ	2	K1	7	28	4.00	7.40 in	6.25 in	2.12 in	Front	
8	7056087276	Pictsweet Chopped Spinach	16.00OZ	2	K1	6	24	4.00	6.75 in	7.50 in	2.20 in	Front	
9	7056092911	Pictsweet Brussel Sprouts	14.00OZ	2	K1	7	28	4.00	7.40 in	6.00 in	1.80 in	Front	
10	7056081993	Pictsweet Field Peas W/ Snaps	16.00OZ	2	K1	8	32	4.00	7.40 in	6.00 in	1.80 in	Front	
11	7056083155	Pictsweet Baby Lima Beans	14.00OZ	2	K1	8	32	4.00	7.40 in	6.00 in	1.80 in	Front	
12	7056097566	Pictsweet Brussel Sprouts Baby Butter	4.50OZ	2	K3/NEW	12	20	1.67	5.00 in	5.00 in	2.13 in	Front	4/26/2017
13	7056083471	Pictsweet Fordhook Lima	14.00OZ	2	K2	8	32	4.00	7.13 in	6.00 in	1.22 in	Front	
14	1450000461	Birds Eye Vegetables Mixed	16.00OZ	2	K1	12	20	1.67	5.59 in	8.87 in	2.11 in	Front	
15	1450050563	Birds Eye Pepper Stir Fry	16.00OZ	2	K1	12	32	2.67	4.95 in	8.46 in	1.37 in	Front	
16	1450002516	Birds Eye Stmfrsh Asian Rice	10.80OZ	1	K3	10	14	1.40	7.50 in	7.50 in	1.47 in	Front	
17	1450001161	Birds Eye Peas Garlic Baby W Mshrms	10.80OZ	1	K1	10	14	1.40	7.50 in	7.50 in	1.47 in	Front	
18	1450002162	Birds Eye Corn Sthwstrn Steamfresh	10.80OZ	1	K3	10	14	1.40	7.50 in	7.50 in	1.47 in	Front	
19	1450002163	Birds Eye Asian Medley	10.80OZ	2	K3	8	24	3.00	7.50 in	7.50 in	1.83 in	Front	
20	1450001312	Birds Eye Rice Chicken Flvr Stmfrsh	10.00OZ	1	K1	10	14	1.40	7.50 in	7.50 in	1.47 in	Front	
21	1450001311	Birds Eye Rice Sw Style Stmfrsh	10.00OZ	1	K3	10	14	1.40	7.50 in	7.50 in	1.47 in	Front	
22	1450001280	Birds Eye Rice Brown Whl Grain Stmfrsh	10.00OZ	1	K3	12	16	1.33	6.73 in	7.05 in	1.30 in	Front	
23	7007706548	Vip Sw Corn Yellow Sweet Cut	12.00OZ	2	K3	12	20	1.67	7.10 in	7.14 in	2.20 in	Front	
24	7007705002	Vip Bean N Carrot Blend	14.00OZ	2	K3	12	20	1.67	8.00 in	7.40 in	2.20 in	Front	
25	7007701073	Vip Pepper Green Strips	14.00OZ	3	K1	12	30	2.50	8.34 in	7.40 in	2.20 in	Front	
26	7007701016	Vip Beans Lima Baby	16.00OZ	1	K3	12	16	1.33	5.22 in	7.30 in	2.00 in	Top	
27	7007702088	Vip Spinach Chopped	10.00OZ	2	K2	24	60	2.50	4.10 in	5.40 in	1.40 in	Front	
28	2000027796	Green Giant Steamers Basil Vegetable Medley	12.00OZ	2	K1	12	18	1.50	7.10 in	8.10 in	2.30 in	Front	
29	2000047481	Green Giant Healthy Mixed Veg Valley Blend	11.00OZ	1	K4	8	12	1.50	7.25 in	8.10 in	1.80 in	Front	
30	2000044712	Green Giant Seasoned Vegetable Tuscan Broccoli	11.00OZ	2	K3	12	14	1.17	6.50 in	9.00 in	3.00 in	Front	
31	2000044998	Green Giant Seasoned Veg Brussel Sprouts Sea ...	11.00OZ	2	K4	12	14	1.17	6.50 in	7.75 in	3.00 in	Front	
32	2190850124	Cascadian Farms Corn Sweet	16.00OZ	1	K3	12	14	1.17	5.50 in	6.18 in	2.06 in	Front	
33	2190850141	Cascadian Farms Vegetables Mixed	16.00OZ	1	K3	12	17	1.42	6.18 in	5.50 in	1.50 in	Front	
34	7007706448	Vip Corn Organic Sweet Cut	24.00OZ	2	K3	6	24	4.00	7.70 in	9.23 in	1.80 in	Front	

SHELF:3		WIDTH:420 in			MERCH HEIGHT:15.00 in			DEPTH:22 in			SPACE AVAIL:3.47 in			
Locatio...	UPC	NAME	SIZE	UOM	NOF	RSL	CS/PK	PACKOUT	Cases	H	W	D	Orientation	Add Date
1	1450001265	Birds Eye Nrmnd Blend Veg Blnd 23 Servin	65.00OZ		1	K3	6	8	1.33	9.13 in	13.75 in	2.19 in	Base	
2	7056096927	Pictsweet Seasoning Blend 5lb	5.00LB		1	K1	6	8	1.33	9.75 in	13.50 in	2.25 in	Base	
3	7056097906	Pictsweet Sweet Corn Steamables	10.00OZ		3	K1	9	54	6.00	7.13 in	6.00 in	1.22 in	Front	
4	7056097916	Pictsweet Veg Cut Green Beans Steamables	8.00OZ		2	K2	8	30	3.75	7.13 in	6.00 in	1.38 in	Front	
5	7056097926	Pictsweet Cut Leaf Spinach Steam	10.00OZ		2	K1	7	34	4.86	7.25 in	7.50 in	1.25 in	Front	
6	7056097836	Ps Stm Edamame	12.00OZ		2	K2	12	34	2.83	7.25 in	8.25 in	1.25 in	Front	
7	7056097771	Ps Edamame with Sea Salt	10.00OZ		1	K4	12	20	1.67	7.25 in	8.25 in	1.25 in	Front	
8	7056092326	Pictsweet Cut Corn	16.00OZ		3	K1	8	48	6.00	7.40 in	5.55 in	1.80 in	Front	
9	7056087157	Pictsweet Cut Leaf Spinach	14.00OZ		2	K1	6	24	4.00	7.40 in	7.00 in	2.55 in	Front	
10	7056088379	Pictsweet Mustard Greens Chopped	16.00OZ		1	K3	6	12	2.00	6.75 in	7.50 in	2.20 in	Front	
11	7056085615	Pictsweet Cut Okra	16.00OZ		3	K1	6	36	6.00	7.40 in	7.75 in	2.44 in	Front	
12	7056098377	Breaded Okra Crunchy	16.00OZ		2	K1	6	24	4.00	7.40 in	6.25 in	2.12 in	Front	
13	1450000256	Birds Eye Broccoli Baby	16.00OZ		3	K1	12	42	3.50	5.91 in	8.50 in	1.57 in	Front	
14	1450000413	Birds Eye Broccoli Delux Cut	16.00OZ		2	K2	12	22	1.83	5.49 in	8.46 in	1.99 in	Front	
15	1450002253	BirdsEye Baby Sweet Peas	13.00OZ		1	K2	12	18	1.50	5.00 in	7.50 in	1.22 in	Front	
16	1450002260	BirdsEye Baby Gold n White Corn	14.40OZ		2	K1	10	28	2.80	5.00 in	7.50 in	1.47 in	Front	
17	1450001583	Birdseye Asian Protein Blend	11.70OZ		1	K4	12	14	1.17	6.50 in	8.00 in	1.50 in	Front	
18	1450001579	Birdseye California Protein Blend	10.80OZ		1	K3	12	17	1.42	6.50 in	8.00 in	1.25 in	Front	
19	1450001581	Southwest Protein Blend	12.70OZ		1	K4	10	12	1.20	6.38 in	7.75 in	1.75 in	Front	
20	7007701009	Vip Beans Green Whole	14.00OZ		3	K1	12	30	2.50	8.34 in	7.27 in	2.20 in	Front	
21	7007701065	Vip Peas Green Petite	16.00OZ		2	K1	12	20	1.67	8.34 in	7.00 in	2.20 in	Front	
22	7007701076	Vip Mixed Vegetables	16.00OZ		2	K2	12	32	2.67	5.22 in	7.50 in	2.20 in	Top	
23	2000027795	Green Giant Steamers Garden Vegetable Medley	12.00OZ		2	K2	12	18	1.50	7.10 in	8.10 in	2.30 in	Front	
24	2000019961	Green Giant Steamers Pot Grn Bns In Rosemary ...	12.00OZ		2	K2	12	18	1.50	7.10 in	8.10 in	2.30 in	Front	

FROZEN VEGETABLES - 14 Doors NW SW Regions

25	2000044997	Green Giant Seasoned Grilled Potatoes	11.00OZ	2	K3	12	14	1.17	6.50 in	7.75 in	3.00 in	Front	
26	2000044711	Green Giant Seasoned Veg Honey Roasted Corn	11.00OZ	2	K3	12	14	1.17	6.50 in	7.75 in	2.80 in	Front	
27	2000044999	Green Giant Seasoned Veg Mediterranean Blend	11.00OZ	2	K4	12	14	1.17	6.50 in	7.75 in	3.00 in	Front	
28	2190850145	Cascadian Farms Beans Green Cut	16.00OZ	1	K3	12	13	1.08	6.18 in	5.50 in	2.06 in	Front	
29	2190850507	Cascadian Farms Spinach Bib	10.00OZ	1	K3	12	22	1.83	5.40 in	6.10 in	1.00 in	Front	
30	7007706409	Vip Beans Organic Green Whl	21.00OZ	2	K3	6	12	2.00	7.70 in	9.00 in	3.58 in	Front	

SHELF:4		WIDTH:420 in			MERCH HEIGHT:15.00 in			DEPTH:22 in			SPACE AVAIL:0.90 in			
Locatio...	UPC	NAME	SIZE	UOM	NOF	RSL	CS/PK	PACKOUT	Cases	H	W	D	Orientation	Add Date
1	1450001267	Birds Eye California Blend - Carrot/Broc/Caul	65.00OZ		1	K1	6	8	1.33	9.38 in	13.81 in	2.19 in	Top	
2	7056083183	Pictsweet Baby Lima Beans 4lb	4.00LB		1	K1	6	8	1.33	10.50 in	11.50 in	2.25 in	Base	
3	7056097911	Pictsweet Mixed Vegetables Steamable	10.00OZ		3	K1	9	54	6.00	7.13 in	6.00 in	1.22 in	Front	
4	7056097901	Pictsweet Vgs Sweet Pea Steamable	10.00OZ		2	K2	9	36	4.00	7.13 in	6.00 in	1.22 in	Front	
5	7056097799	Ps Steam'Ables Asparagus Spears	8.00OZ		2	K1	12	34	2.83	8.00 in	6.50 in	1.25 in	Front	
6	7056097981	Ps Steam'Ables Szechuan Asparagus	12.00OZ		1	K1	6	11	1.83	7.25 in	8.00 in	2.00 in	Front	
7	7056097806	Pictsweet Broccoli Florets	10.00OZ		1	K4	7	14	2.00	7.13 in	9.50 in	1.57 in	Front	
8	7056097871	Ps Stm Shelled Edamame	8.00OZ		1	K3	12	17	1.42	7.25 in	8.25 in	1.25 in	Front	
9	7056084394	Pictsweet Cut Green Beans	16.00OZ		2	K1	7	28	4.00	7.40 in	6.25 in	2.12 in	Front	
10	7056090915	Pictsweet Broccoli Cuts	14.00OZ		2	K1	6	24	4.00	7.40 in	6.50 in	2.44 in	Front	
11	7056087677	Pictsweet Chopped Collard Greens	16.00OZ		2	K1	6	24	4.00	6.75 in	7.50 in	2.20 in	Front	
12	7056088740	Pictsweet Turnip Greens Chopped	16.00OZ		1	K2	6	12	2.00	6.75 in	7.50 in	2.20 in	Front	
13	7056085185	Pictsweet Whole Okra	16.00OZ		2	K1	6	24	4.00	7.40 in	8.50 in	2.55 in	Front	
14	1450002439	BirdsEye Sweet Kernel Corn	14.40OZ		1	K3	10	14	1.40	5.00 in	7.50 in	1.47 in	Front	
15	1450001570	Birds Eye BBQ Corn	12.00OZ		2	K3	12	44	3.67	6.50 in	7.50 in	1.00 in	Front	
16	1450002157	Birds Eye Beans Green Whl Stmfrsh	10.80OZ		3	K1	10	42	4.20	7.50 in	7.50 in	1.47 in	Front	
17	1450001283	Birds Eye Corn Gold And White Stmfrsh	12.00OZ		2	K2	12	34	2.83	6.50 in	6.59 in	1.27 in	Front	
18	1450001351	Birds Eye Stmfr Asprg 3 Serving Spear Ba	8.00OZ		1	K4	12	17	1.42	7.69 in	8.98 in	1.27 in	Front	
19	1450001298	Birds Eye Potato Blend Stmfrsh Mix	10.00OZ		1	K1	10	14	1.40	7.50 in	7.50 in	1.47 in	Front	
20	1450002132	Birds Eye Broccoli Cauliflwr Steam Frsh	10.80OZ		2	K1	8	24	3.00	7.50 in	7.50 in	1.83 in	Front	
21	1450002134	Birdseye Steam Fresh Asparagus,Corn n Baby C...	10.80OZ		1	K2	10	14	1.40	7.50 in	7.50 in	1.47 in	Front	
22	1450002130	Birds Eye Brocc Carrots Snap Peas	10.80OZ		2	K2	8	24	3.00	7.50 in	7.50 in	1.83 in	Front	
23	7007701027	Vip Broccoli Florets	14.00OZ		4	K1	12	32	2.67	8.62 in	7.00 in	2.70 in	Front	
24	7007706127	Vip Broccoli Florets W Grlc Btr	21.00OZ		2	K1	12	14	1.17	7.70 in	9.20 in	3.00 in	Front	
25	2000027336	Green Giant Steamers Corn Niblets	12.00OZ		2	K3	12	18	1.50	7.10 in	8.10 in	2.30 in	Front	
26	2000027332	Green Giant Vfs Broccoli Cuts Poly	12.00OZ		2	K2	12	18	1.50	7.10 in	8.10 in	2.30 in	Front	
27	2000027338	Green Giant Vfs Peas Sweet Poly	12.00OZ		2	K3	12	18	1.50	7.10 in	8.10 in	2.30 in	Front	
28	2000019965	Green Giant Steamers Rice And Broccoli Cheesy	12.00OZ		2	K1	12	18	1.50	7.10 in	8.00 in	2.30 in	Front	
29	2190850335	Cscdn Farm Broc 2 Serving Flrt Bag Poly	10.00OZ		1	K4	12	14	1.17	6.41 in	10.12 in	1.55 in	Front	
30	2190850340	Casc Frm Garden Peas Og 10 Oz	10.00OZ		1	K4	12	22	1.83	5.40 in	6.10 in	1.00 in	Front	
31	7007706464	Vip Peas Organic Sweet	24.00OZ		1	K3	6	12	2.00	7.70 in	9.33 in	1.80 in	Front	
32	7007706476	Vip Veggies Organic Mixed	24.00OZ		1	K3	6	12	2.00	7.70 in	9.33 in	1.80 in	Front	

SHELF:5		WIDTH:420 in			MERCH HEIGHT:16.00 in			DEPTH:22 in			SPACE AVAIL:1.13 in			
Locatio...	UPC	NAME	SIZE	UOM	NOF	RSL	CS/PK	PACKOUT	Cases	H	W	D	Orientation	Add Date
1	1450000935	Birds Eye Swt Corn 25 Serving Whl Krnl B	80.00OZ		1	K3	6	8	1.33	9.63 in	12.50 in	2.00 in	Base	
2	7056090940	Pictsweet Broccoli Cuts 4lb	4.00LB		1	K1	6	8	1.33	10.50 in	15.10 in	2.25 in	Base	
3	7056097921	Pictsweet Broccoli Cuts Steamables	12.00OZ		2	K1	7	34	4.86	7.25 in	7.50 in	1.25 in	Front	
4	7056097966	Ps Steam'Ables Whole Green Bean	10.00OZ		2	K2	7	28	4.00	7.13 in	8.00 in	1.57 in	Front	
5	7056097731	PS Dlx Stm Brussels	12.00OZ		1	K1/NEW	7	14	2.00	7.13 in	7.50 in	1.57 in	Front	
6	7056090051	Pictsweet Green Peas	14.00OZ		2	K1	8	32	4.00	7.40 in	6.00 in	1.80 in	Front	
7	7056084663	Pictsweet French Style Green Beans	16.00OZ		2	K1	6	24	4.00	7.40 in	7.50 in	2.44 in	Front	
8	7056093332	Pictsweet Carrots Sliced	16.00OZ		2	K1	6	24	4.00	7.40 in	6.25 in	2.12 in	Front	
9	7056088201	Pictsweet Kale Cut Leaf	16.00OZ		1	K3	6	12	2.00	6.75 in	7.50 in	2.20 in	Front	
10	7056092208	Pictsweet Cut Corn	24.00OZ		2	K1	6	24	4.00	7.13 in	7.50 in	1.83 in	Front	
11	7056095011	Pictsweet Mixed Vegetables	24.00OZ		1	K1	6	8	1.33	7.50 in	8.00 in	2.50 in	Front	
12	7056086505	Pictsweet Yellow Sliced Squash	16.00OZ		1	K3	6	12	2.00	7.40 in	7.75 in	2.44 in	Front	
13	1450000378	Birds Eye Corn On Cob Lil Ears	4.00OZ		1	K2	12	16	1.33	5.45 in	8.21 in	2.18 in	Base	

FROZEN VEGETABLES - 14 Doors NW SW Regions

14	1450000297	Birds Eye Broccoli Cuts Tender	32.00OZ	2	K3	12	24	2.00	6.80 in	11.00 in	2.00 in	Base	
15	1450002183	Birds Eye Broccoli Florets Stmfrsh	10.80OZ	3	K1	6	27	4.50	7.50 in	7.50 in	2.44 in	Front	
16	1450002158	Birds Eye Brussel Sprouts Baby Stmfrsh	10.80OZ	2	K2	10	28	2.80	7.50 in	7.50 in	1.47 in	Front	
17	1450001352	Birds Eye Edamame Unshelled	10.00OZ	1	K3	10	14	1.40	7.50 in	7.50 in	1.47 in	Front	
18	1450001295	Birds Eye Broccoli Blend Stmfrsh Mix	11.00OZ	2	K2	12	34	2.83	6.50 in	9.29 in	1.25 in	Front	
19	1450002129	Birds Eye Broc Caulif Carrots Steam Frsh	10.80OZ	2	K1	8	24	3.00	7.50 in	7.50 in	1.83 in	Front	
20	7007701048	Vip Corn Cut	16.00OZ	2	K3	12	32	2.67	5.22 in	7.50 in	2.20 in	Top	
21	7007701228	Vip Broccoli Cuts	32.00OZ	2	K1	12	30	2.50	11.42 in	6.85 in	1.75 in	Side 90	
22	7007701208	Vip Beans Green Reg Cut	32.00OZ	2	K1	12	30	2.50	11.67 in	6.17 in	1.75 in	Side 90	
23	2000019966	Green Giant Corn Sweet And Butter Sauce	12.00OZ	2	K1	12	18	1.50	7.10 in	8.10 in	2.30 in	Front	
24	2000029015	Green Giant Broccoli Florets Select	12.00OZ	2	K2	8	18	2.25	7.10 in	8.10 in	2.30 in	Front	
25	2000019964	Green Giant Steamers Broc Crrts Cauli Cheese S...	12.00OZ	2	K2	12	18	1.50	7.10 in	8.10 in	2.30 in	Front	
26	2000019963	Green Giant Steamers Broccoli And Cheese	12.00OZ	2	K1	12	18	1.50	7.10 in	8.10 in	2.30 in	Front	
27	2000041906	Green Giant Villy Fresh Stmrs Entree 12 O	12.00OZ	1	K4	12	7	0.58	6.50 in	8.75 in	3.00 in	Front	
28	2857100558	Village Harvest Whole Grain w/Cranberry Almond	10.00OZ	1	M3/NW SW	10	22	2.20	7.50 in	6.25 in	1.00 in	Front	
29	2857100557	Village Harvest Wg w/Corn Black Beans	10.00OZ	1	M3/NW SW	10	22	2.20	7.50 in	6.25 in	1.00 in	Front	
30	2857100556	Village Harvest Golden Quinoa	8.00OZ	1	M3/NW SW	12	22	1.83	7.50 in	6.25 in	1.00 in	Front	
31	3260102508	Earthbound Organic Green Peas	10.00OZ	2	M2/NW SW	12	18	1.50	8.00 in	6.00 in	2.25 in	Front	

SHELF:6 Base		WIDTH:420 in		MERCH HEIGHT:22.00 in			DEPTH:25 in			SPACE AVAIL:1.48 in				
Locatio...	UPC	NAME	SIZE	UOM	NOF	RSL	CS/PK	PACKOUT	Cases	H	W	D	Orientation	Add Date
1	1450001269	Birds Eye Broccoli Florets	65.00OZ	2	K1	6	12	2.00	10.00 in	14.50 in	3.00 in	Top		
2	7056095746	Ps Cb Veg For Soup	32.00OZ	2	K3	12	30	2.50	7.00 in	9.70 in	2.00 in	Top		
3	7056096244	Pictsweet Teriyaki Stir Fry	20.00OZ	2	K2/NEW	5	22	4.40	7.25 in	7.50 in	2.20 in	Front		
4	7056095698	Pictsweet Chinese Stir Fry	20.00OZ	1	K3/NEW	5	11	2.20	7.25 in	7.50 in	2.20 in	Front		
5	7056091216	Ps Fs Broc Spears	22.00OZ	2	K1	6	14	2.33	8.25 in	10.50 in	3.25 in	Front		
6	7056084330	Pictsweet Cut Green Beans	24.00OZ	2	K1	5	22	4.40	7.13 in	7.50 in	2.20 in	Front		
7	7056090093	Pictsweet Green Peas	24.00OZ	2	K2	6	20	3.33	7.50 in	8.00 in	2.50 in	Front		
8	1450000380	Birds Eye Corn On Cob Lil Ears	12.00OZ	3	K1	8	36	4.50	8.21 in	8.02 in	2.02 in	Top		
9	1450000373	Birds Eye Corn Cob	6.00OZ	2	K1	12	40	3.33	6.16 in	5.50 in	1.93 in	Base		
10	1450002099	BirdsEye Steam Fresh Super Sweet Corn	10.00OZ	2	K2	16	54	3.38	6.50 in	7.50 in	0.92 in	Front		
11	1450001098	Birds Eye Broccoli Cuts Steam Frsh	12.00OZ	2	K2	12	32	2.67	5.53 in	8.58 in	1.55 in	Front		
12	1450002101	Birdseye Steam Fresh Cut Green Beans	10.00OZ	2	K2	12	40	3.33	6.50 in	7.50 in	1.22 in	Front		
13	1450002100	Birdseye Sweet Peas	10.00OZ	2	K2	16	54	3.38	6.50 in	7.50 in	0.92 in	Front		
14	1450002128	BirdsEye Steam Fresh Mixed Vegetables	10.00OZ	2	K1	16	54	3.38	6.50 in	7.50 in	0.92 in	Front		
15	7007701276	Vip Mixed Vegetables	32.00OZ	2	K1	12	40	3.33	1.75 in	11.67 in	5.08 in	Front		
16	7007701248	Vip Corn Cut	32.00OZ	2	K1	12	40	3.33	1.75 in	11.67 in	5.08 in	Front		
17	7007701264	Vip Peas Green	32.00OZ	2	K1	12	40	3.33	11.67 in	6.17 in	1.75 in	Side 90		
18	7007701247	Vip Vegetable Calif Blend Baby	32.00OZ	1	K1	12	15	1.25	1.75 in	11.40 in	6.72 in	Front		
19	2000014585	Green Giant Corn On Cob Nibbles	6.00OZ	2	K1	12	48	4.00	3.70 in	10.00 in	2.10 in	Top		
20	2000012864	Green Giant Corn Nibblers Extra Sweet	12.00CT	2	K1	6	26	4.33	7.62 in	7.13 in	1.90 in	Front		
21	2000012138	Green Giant Corn On Cobb	12.00CT	2	K1	6	30	5.00	7.50 in	7.41 in	1.98 in	Top		
22	1115225100	Jfc Soybeans In Pod	16.00OZ	4	K1	20	40	2.00	8.50 in	5.60 in	2.50 in	Front		
23	3260102512	Earthbound Organic Butternut Squash	10.00OZ	2	M2/NW SW	12	22	1.83	7.50 in	7.75 in	2.25 in	Front		
24	3260102511	Earthbound Organic Green beans	10.00OZ	2	M2/NW SW	12	22	1.83	8.00 in	7.50 in	2.25 in	Front		