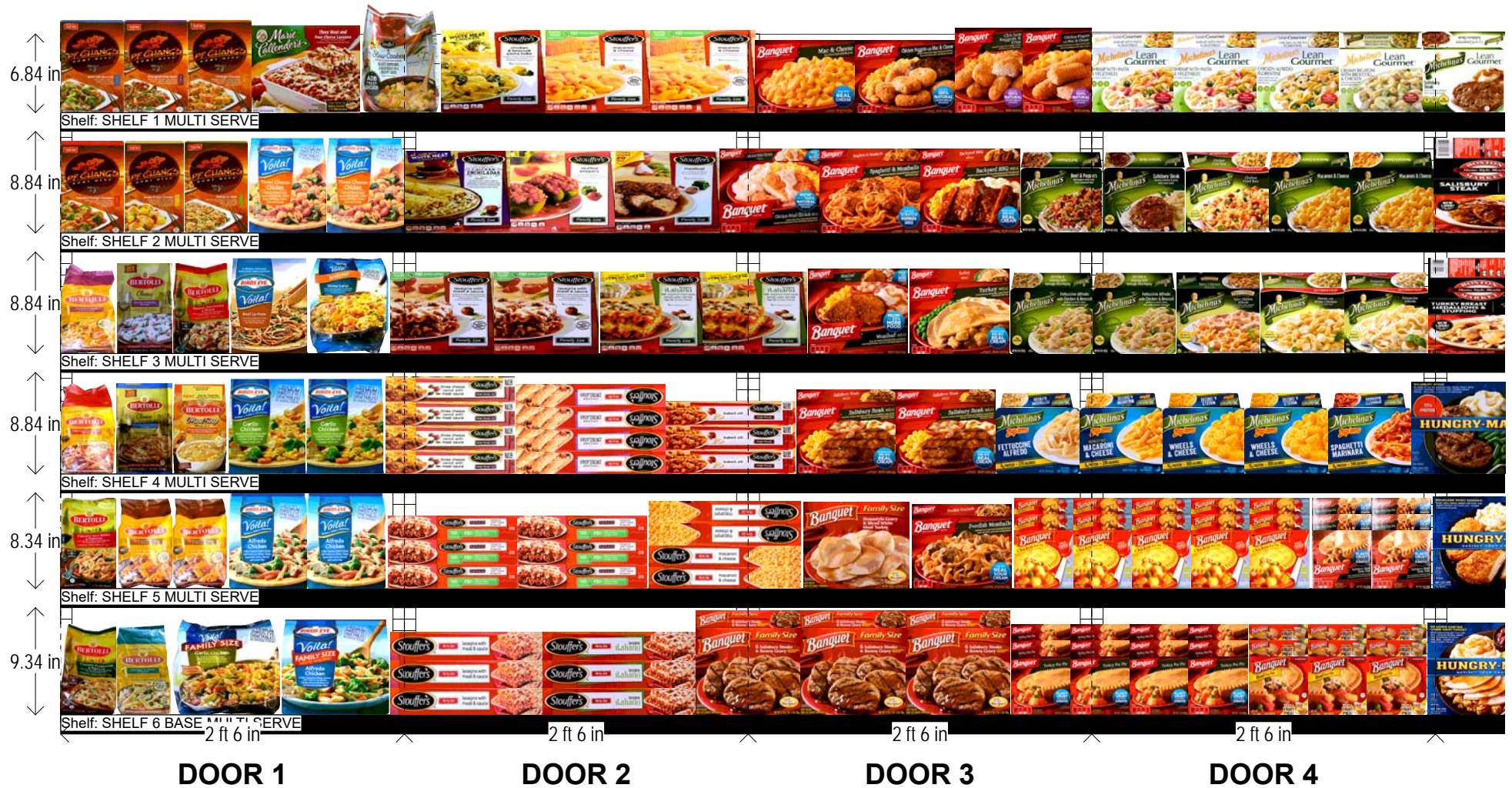


FROZEN PREPARED PREPARED MEALS - 10 DOORS 30"

HQ DeCA PLANOGRAM

CLASS 1 STORES



Left-right

HQ DeCA/MBU PLANOGRAM APPROVED BY JAMES TAYLOR/ IVEENA HENDERSON

30 MAY 2017

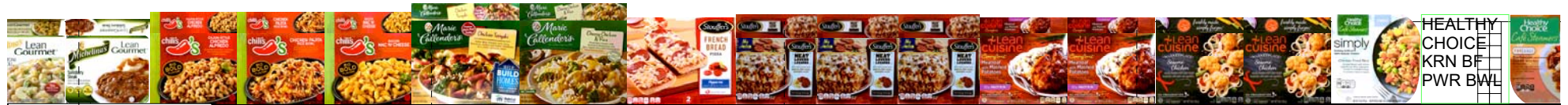
ITEM SHELF POSITIONING MUST NOT BE CHANGED AT ANY TIME. PRODUCT FACINGS MAY BE ADJUSTED TO MEET CUSTOMER DEMAND USING STORE SPECIFIC DATA BUT MUST BE APPROVED BY HEADQUARTERS BEFORE IMPLEMENTING AT STORE LEVEL

Frozen PMeals
Multi Serve 03-02-
16.psa

FROZEN PREPARED PREPARED MEALS - 10 DOORS 30"

HQ DeCA PLANOGRAM

CLASS 1 STORES



Shelf: SHELF 1 MULTI SERVE



Shelf: SHELF 2 MULTI SERVE



Shelf: SHELF 3 MULTI SERVE



Shelf: SHELF 4 MULTI SERVE



Shelf: SHELF 5 MULTI SERVE



Shelf: SHELF 6 BASE MULTI SERVE

DOOR 5

DOOR 6

DOOR 7

DOOR 8

2 ft 6 in

2 ft 6 in

2 ft 6 in

2 ft 6 in

Left-right

HQ DeCA/MBU PLANOGRAM APPROVED BY JAMES TAYLOR/ IVEENA HENDERSON

30 MAY 2017

ITEM SHELF POSITIONING MUST NOT BE CHANGED AT ANY TIME. PRODUCT FACINGS MAY BE ADJUSTED TO MEET CUSTOMER DEMAND USING STORE SPECIFIC DATA BUT MUST BE APPROVED BY HEADQUARTERS BEFORE IMPLEMENTING AT STORE LEVEL

Frozen PMeals
Multi Serve 03-02-
16.psa

FROZEN PREPARED PREPARED MEALS - 10 DOORS 30"

HQ DeCA PLANOGRAM

CLASS 1 STORES



DOOR 9

DOOR 10

Left-right

HQ DeCA/MBU PLANOGRAM APPROVED BY JAMES TAYLOR/ IVEENA HENDERSON

30 MAY 2017

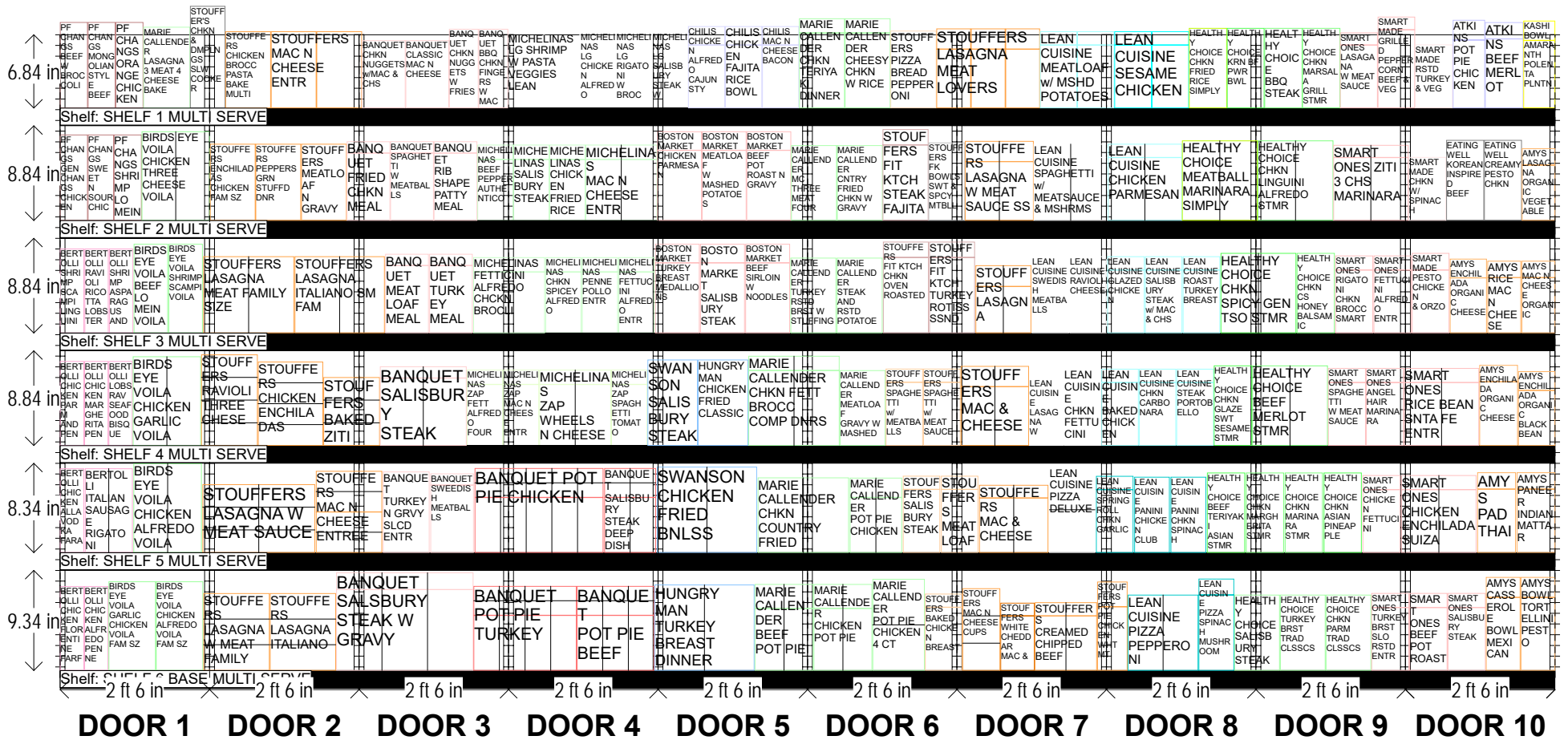
ITEM SHELF POSITIONING MUST NOT BE CHANGED AT ANY TIME. PRODUCT FACINGS MAY BE ADJUSTED TO MEET CUSTOMER DEMAND USING STORE SPECIFIC DATA BUT MUST BE APPROVED BY HEADQUARTERS BEFORE IMPLEMENTING AT STORE LEVEL

Frozen PMeals
Multi Serve 03-02-
16.psa

FROZEN PREPARED PREPARED MEALS - 10 DOORS 30"

HQ DeCA PLANOGRAM

CLASS 1 STORES



Left-right	HQ DeCA/MBU PLANOGRAM APPROVED BY JAMES TAYLOR/ IVEENA HENDERSON
30 MAY 2017	ITEM SHELF POSITIONING MUST NOT BE CHANGED AT ANY TIME. PRODUCT FACINGS MAY BE ADJUSTED TO MEET CUSTOMER DEMAND USING STORE SPECIFIC DATA BUT MUST BE APPROVED BY HEADQUARTERS BEFORE IMPLEMENTING AT STORE LEVEL
Frozen PMeals Multi Serve 03-02-16.psa	

FROZEN PREPARED PREPARED MEALS - 10 DOORS 30"

SHELF:SHELF 1 MULT... WIDTH:300 in		MERCH HEIGHT:8.50 in			DEPTH:22 in			SPACE AVAIL:2.82 in						
Locatio...	UPC	NAME	SIZE	UOM	NOF	RSL	CS/PK	PACKOUT	Cases	H	W	D	Orientation	Add Date
1	3100067001	PF CHANGS BEEF W BROCCOLI	22.00OZ		1	K1	4	7	1.75	8.00 in	5.50 in	3.05 in	Front	5/29/2013
2	3100067000	PF CHANGS MONGOLIAN STYLE BEEF	22.00OZ		1	K1	4	7	1.75	8.00 in	5.50 in	3.05 in	Front	5/29/2013
3	3100067002	PF CHANGS ORANGE CHICKEN	22.00OZ		1	K1	4	7	1.75	8.00 in	5.50 in	3.05 in	Front	5/29/2013
4	2113135015	MARIE CALLENDER LASAGNA 3 MEAT 4 CHEE...	31.00OZ		1	K1	8	11	1.38	7.55 in	9.32 in	1.93 in	Front	7/30/2010
5	1380075804	STOUFFER'S CHKN & DMPLNGS SLW COOKER	0.00OZ		1	K1/New	5	5	1.00	9.50 in	7.00 in	4.00 in	Front	11/1/2016
6	1380019074	STOUFFERS CHICKEN BROCC PASTA BAKE ...	40.00OZ		1	K1	6	10	1.67	7.13 in	9.07 in	2.07 in	Front	3/24/2010
7	1380010334	STOUFFERS MAC N CHEESE ENTR	40.00OZ		2	K1	6	20	3.33	7.13 in	9.07 in	2.07 in	Front	6/1/1992
8	3100080922	BANQUET CHKN NUGGETS w/MAC & CHS	7.40OZ		1	K1	12	20	1.67	6.30 in	8.65 in	1.06 in	Front	10/16/2016
9	3100080921	BANQUET CLASSIC MAC N CHEESE	10.00OZ		1	K1	12	20	1.67	6.30 in	8.65 in	1.06 in	Front	10/16/2016
10	3100000708	BANQUET CHKN NUGGETS W FRIES	4.85OZ		1	K1	12	17	1.42	7.36 in	5.86 in	1.25 in	Front	8/24/2015
11	3100000717	BANQUET BBQ CHKN FINGERS W MAC N CHSE	6.50OZ		1	K1	12	17	1.42	7.36 in	5.86 in	1.25 in	Front	8/24/2015
12	71785410628	MICHELINAS LG SHRIMP W PASTA VEGGIES ...	8.00OZ		2	K1	12	38	3.17	5.70 in	7.15 in	1.35 in	Front	1/16/2003
13	71785410623	MICHELINAS LG CHICKEN ALFREDO FLOREN...	8.50OZ		1	K1	12	19	1.58	5.70 in	7.15 in	1.35 in	Front	1/16/2003
14	71785410669	MICHELINAS LG RIGATONI W BROCC N CHICKEN	8.00OZ		1	K1	12	19	1.58	5.70 in	7.15 in	1.35 in	Front	12/21/2009
15	71785410630	MICHELINAS LG SALISBURY STEAK W POTATO	7.50OZ		1	K1	12	19	1.58	5.70 in	7.15 in	1.35 in	Front	2/13/2006
16	71785447014	CHILIS CHICKEN ALFREDO CAJUN STY	10.00OZ		1	K1	8	15	1.88	5.88 in	7.35 in	1.74 in	Front	4/22/2014
17	71785447001	CHILIS CHICKEN FAJITA RICE BOWL	10.00OZ		1	K1	8	15	1.88	5.88 in	7.35 in	1.74 in	Front	4/22/2014
18	71785447012	CHILIS MAC N CHEESE BACON	10.00OZ		1	K1	8	15	1.88	5.88 in	7.35 in	1.74 in	Front	4/22/2014
19	2113180040	MARIE CALLENDER CHKN TERIYAKI DINNER	13.00OZ		1	K1	8	19	2.38	7.00 in	9.10 in	1.35 in	Front	5/6/2014
20	2113150469	MARIE CALLENDER CHEESY CHKN W RICE	13.00OZ		1	K1	8	19	2.38	7.00 in	9.10 in	1.35 in	Front	5/19/2015
21	1380015173	STOUFFERS PIZZA BREAD PEPPERONI	11.25OZ		1	K1	10	14	1.40	7.20 in	9.15 in	1.50 in	Front	6/1/1992
22	1380086980	STOUFFERS LASAGNA MEAT LOVERS	18.00OZ		3	K1	12	45	3.75	5.50 in	6.85 in	1.90 in	Front	3/20/2014
23	1380016695	LEAN CUISINE MEATLOAF w/ MSHD POTATOES	9.38OZ		2	K1	12	40	3.33	5.88 in	7.40 in	1.26 in	Front	6/1/1992
24	1380065455	LEAN CUISINE SESAME CHICKEN	9.00OZ		2	K1	12	40	3.33	5.88 in	7.40 in	1.26 in	Front	2/24/2005
25	7265540104	HEALTHY CHOICE CHKN FRIED RICE SIMPLY	10.00OZ		1	K1	8	11	1.38	7.45 in	7.55 in	1.95 in	Front	5/19/2015
26	7265500134	HEALTHY CHOICE KRN BF PWR BWL	9.50OZ		1	K1/New	8	13	1.63	7.45 in	7.45 in	1.63 in	Front	4/25/2017
27	7265540509	HEALTHY CHOICE BBQ STEAK	9.50OZ		1	K1	8	11	1.38	7.45 in	7.55 in	1.95 in	Front	5/19/2015
28	7265500108	HEALTHY CHOICE CHKN MARSALA GRILL ST...	9.90OZ		1	K1	8	11	1.38	7.45 in	7.55 in	1.95 in	Front	3/10/2014
29	2580002658	SMART ONES LASAGANA W MEAT SAUCE	10.50OZ		1	K1	12	22	1.83	5.88 in	7.50 in	1.15 in	Front	7/28/2014
30	2580000050	SMART MADE GRILLED PEPPERCORN BEEF ...	9.00OZ		1	K1/New	8	21	2.63	7.30 in	7.40 in	1.20 in	Front	4/18/2012
31	2580000033	SMART MADE RSTD TURKEY & VEG	9.00OZ		1	K1/New	8	14	1.75	5.90 in	7.50 in	1.56 in	Front	11/16/2016
32	63748009032	ATKINS POT PIE CHICKEN	9.00OZ		1	K1	8	14	1.75	6.35 in	6.40 in	1.85 in	Front	4/10/2013
33	63748009038	ATKINS BEEF MERLOT	9.00OZ		1	K1	8	17	2.13	6.45 in	7.62 in	1.54 in	Front	4/10/2013
34	1862710606	KASHI BOWL AMARANTH POLENTA PLNTN	10.00OZ		1	K1	8	15	1.88	6.31 in	6.31 in	1.82 in	Front	4/14/2016

SHELF:SHELF 2 MULT... WIDTH:300 in		MERCH HEIGHT:8.50 in			DEPTH:22 in			SPACE AVAIL:2.55 in						
Locatio...	UPC	NAME	SIZE	UOM	NOF	RSL	CS/PK	PACKOUT	Cases	H	W	D	Orientation	Add Date
1	3100067007	PF CHANGS GEN CHANGS CHICKEN	22.00OZ		1	K1	4	7	1.75	8.00 in	5.50 in	3.05 in	Front	5/29/2013
2	3100067006	PF CHANGS SWEET N SOUR CHICKEN	22.00OZ		1	K1	4	7	1.75	8.00 in	5.15 in	3.05 in	Front	5/29/2013
3	3100067005	PF CHANGS SHRIMP LO MEIN	22.00OZ		1	K1	4	7	1.75	8.00 in	5.50 in	3.05 in	Front	5/29/2013
4	1450000713	BIRDS EYE VOILA CHICKEN THREE CHEESE ...	21.00OZ		2	K1	6	18	3.00	8.30 in	6.80 in	2.40 in	Front	8/20/1998
5	1380055173	STOUFFERS ENCHILADAS CHICKEN FAM SZ	30.00OZ		1	K1	6	10	1.67	7.13 in	9.07 in	2.07 in	Front	10/7/2008
6	1380019021	STOUFFERS PEPPERS GRN STUFFD DNR	32.00OZ		1	K1	6	10	1.67	7.13 in	9.07 in	2.07 in	Front	6/3/1999
7	1380019020	STOUFFERS MEATLOAF N GRAVY	33.00OZ		1	K1	6	10	1.67	7.13 in	9.07 in	2.07 in	Front	4/30/2001
8	3100010976	BANQUET FRIED CHKN MEAL	8.00OZ		1	K1	12	23	1.92	6.30 in	8.65 in	1.06 in	Front	5/18/2015
9	3100000722	BANQUET SPAGHETTI W MEATBALLS	10.00OZ		1	K1	12	23	1.92	6.30 in	8.65 in	1.06 in	Front	8/24/2015
10	3100000738	BANQUET RIB SHAPE PATTY MEAL	10.45OZ		1	K1	12	23	1.92	6.30 in	8.65 in	1.06 in	Front	8/24/2015
11	71785410555	MICHELINAS BEEF PEPPER AUTHENTICO	8.00OZ		1	K1	12	19	1.58	5.70 in	7.15 in	1.35 in	Front	5/19/2015
12	71785410557	MICHELINAS SALISBURY STEAK	8.00OZ		1	K1	12	19	1.58	5.70 in	7.15 in	1.35 in	Front	11/21/2012
13	71785430551	MICHELINAS CHICKEN FRIED RICE	8.00OZ		1	K1	12	19	1.58	5.70 in	7.15 in	1.35 in	Front	10/20/2009
14	71785410515	MICHELINAS MAC N CHEESE ENTR	8.00OZ		2	K1	12	38	3.17	5.70 in	7.15 in	1.35 in	Front	6/1/1992
15	73891202232	BOSTON MARKET CHICKEN PARMESAN	13.10OZ		1	K1	8	15	1.88	6.55 in	8.88 in	1.75 in	Front	4/18/2012
16	73891202230	BOSTON MARKET MEATLOAF W MASHED PO...	14.00OZ		1	K1	8	15	1.88	6.55 in	8.88 in	1.75 in	Front	6/10/2011
17	73891202234	BOSTON MARKET BEEF POT ROAST N GRAVY	15.00OZ		1	K1	8	15	1.88	6.55 in	8.88 in	1.75 in	Front	6/10/2011

FROZEN PREPARED PREPARED MEALS - 10 DOORS 30"

18	2113180048	MARIE CALLENDER MC THREE MEAT FOUR C...	18.00OZ	1	K1/New	8	14	1.75	7.00 in	9.10 in	1.55 in	Front	6/23/2016
19	2113150605	MARIE CALLENDER CNTRY FRIED CHKN W G...	16.00OZ	1	K1	8	10	1.25	7.00 in	9.10 in	2.10 in	Front	5/19/2015
20	1380077151	STOUFFERS FIT KTCH STEAK FAJITA	13.25OZ	1	K1	12	18	1.50	7.05 in	9.10 in	1.45 in	Front	5/18/2015
21	1380048328	STOUFFERS FK BOWLS SWT & SPCY MTBLL	12.00OZ	1	K1/New	8	11	1.38	7.25 in	7.25 in	1.90 in	Front	3/31/2017
22	1380055812	STOUFFERS LASAGNA W MEAT SAUCE SS	19.00OZ	2	K1	12	30	2.50	5.50 in	6.85 in	1.90 in	Front	5/3/2011
23	1380016635	LEAN CUISINE SPAGHETTI w/ MEATSAUCE & ...	11.50OZ	2	K1	12	40	3.33	5.88 in	7.40 in	1.25 in	Front	6/1/1992
24	1380016607	LEAN CUISINE CHICKEN PARMESAN	10.88OZ	2	K1	12	40	3.33	5.88 in	7.40 in	1.26 in	Front	5/12/2009
25	7265540103	HEALTHY CHOICE MEATBALL MARINARA SIM...	10.00OZ	2	K1	8	22	2.75	7.45 in	7.55 in	1.95 in	Front	5/19/2015
26	7265500103	HEALTHY CHOICE CHKN LINGUINI ALFREDO ...	9.80OZ	2	K1	8	22	2.75	7.45 in	7.55 in	1.95 in	Front	3/10/2014
27	2580002376	SMART ONES ZITI 3 CHS MARINARA	9.00OZ	2	K1	12	44	3.67	5.88 in	7.50 in	1.15 in	Front	8/10/2006
28	2580000026	SMART MADE CHKN W/ SPINACH FETT	9.00OZ	1	K1/New	8	14	1.75	5.90 in	7.50 in	1.56 in	Front	11/16/2016
29	71785404005	EATING WELL KOREAN INSPIRED BEEF	0.00OZ	1	K1/New	8	14	1.75	7.50 in	7.50 in	1.50 in	Front	11/16/2016
30	71785404007	EATING WELL CREAMY PESTO CHKN	0.00OZ	1	K1/New	8	14	1.75	7.50 in	7.50 in	1.50 in	Front	11/16/2016
31	4227200032	AMYS LASAGNA ORGANIC VEGETABLE	9.50OZ	1	K1	12	18	1.50	5.17 in	6.60 in	1.55 in	Front	7/24/2003

SHELF:SHELF 3 MULT... WIDTH:300 in			MERCH HEIGHT:8.50 in			DEPTH:22 in			SPACE AVAIL:6.04 in					
Locatio...	UPC	NAME	SIZE	UOM	NOF	RSL	CS/PK	PACKOUT	Cases	H	W	D	Orientation	Add Date
1	3100065010	BERTOLLI SHRIMP SCAMPI LINGUINI	24.00OZ	1	K1	4	6	6	1.50	7.85 in	4.75 in	3.20 in	Front	6/10/2013
2	3100090023	BERTOLLI RAVIOLI RICOTTA LOBSTER	24.00OZ	1	K1	4	6	6	1.50	7.85 in	4.75 in	3.20 in	Front	3/14/2013
3	3100065013	BERTOLLI SHRIMP ASPARAGUS AND PENNE	24.00OZ	1	K1	4	6	6	1.50	7.85 in	4.75 in	3.20 in	Front	6/10/2013
4	1450001253	BIRDS EYE VOILA BEEF LO MEIN VOILA	21.00OZ	1	K1	6	9	9	1.50	8.30 in	6.80 in	2.40 in	Front	2/25/2008
5	1450001172	BIRDS EYE VOILA SHRIMP SCAMPI VOILA	21.00OZ	1	K1	6	9	9	1.50	8.30 in	6.80 in	2.40 in	Front	10/11/2006
6	1380014333	STOUFFERS LASAGNA MEAT FAMILY SIZE	38.00OZ	2	K1	6	20	20	3.33	7.13 in	9.07 in	2.07 in	Front	12/13/2004
7	1380014331	STOUFFERS LASAGNA ITALIANO SM FAM	38.00OZ	2	K1	6	20	20	3.33	7.13 in	9.00 in	2.07 in	Front	3/16/2006
8	3100000731	BANQUET MEATLOAF MEAL	11.88OZ	1	K1	12	23	23	1.92	6.30 in	8.65 in	1.06 in	Front	8/24/2015
9	3100000737	BANQUET TURKEY MEAL	10.00OZ	1	K1	12	23	23	1.92	6.30 in	8.65 in	1.06 in	Front	8/24/2015
10	71785410521	MICHELINAS FETTICINI ALFREDO CHCKN BR...	8.00OZ	2	K1	12	38	38	3.17	5.70 in	7.15 in	1.35 in	Front	12/7/2000
11	71785410598	MICHELINAS CHKN SPICEY ALFREDO	8.00OZ	1	K1	12	19	19	1.58	5.70 in	7.15 in	1.35 in	Front	5/19/2015
12	71785410504	MICHELINAS PENNE POLLO ENTR	9.00OZ	1	K1	12	19	19	1.58	5.70 in	7.15 in	1.35 in	Front	6/1/1992
13	71785410501	MICHELINAS FETTUCINI ALFREDO ENTR	9.00OZ	1	K1	12	19	19	1.58	5.70 in	7.15 in	1.35 in	Front	6/1/1992
14	73891202235	BOSTON MARKET TURKEY BREAST MEDALLI...	14.00OZ	1	K1	8	15	15	1.88	6.55 in	8.88 in	1.75 in	Front	4/18/2012
15	73891202231	BOSTON MARKET SALISBURY STEAK	14.50OZ	1	K1	8	15	15	1.88	6.55 in	8.88 in	1.75 in	Front	6/10/2011
16	73891202233	BOSTON MARKET BEEF SIRLOIN W NOODLES	14.00OZ	1	K1	8	15	15	1.88	6.55 in	8.88 in	1.75 in	Front	6/10/2011
17	2113150660	MARIE CALLENDER TURKEY RSTD BRST W S...	14.00OZ	1	K1	8	14	14	1.75	7.00 in	9.10 in	1.55 in	Front	5/23/2001
18	2113150706	MARIE CALLENDER STEAK AND RSTD POTAT...	13.60OZ	1	K1	8	14	14	1.75	7.00 in	9.10 in	1.55 in	Front	2/7/2008
19	1380029346	STOUFFERS FIT KTCH CHKN OVEN ROASTED	13.25OZ	1	K1	12	18	18	1.50	7.05 in	9.10 in	1.45 in	Front	5/18/2015
20	1380091355	STOUFFERS FIT KTCH TURKEY ROTISS SSND	14.25OZ	1	K1	12	18	18	1.50	7.05 in	9.10 in	1.45 in	Front	5/18/2015
21	1380010321	STOUFFERS LASAGNA	10.50OZ	2	K1	12	32	32	2.67	4.35 in	5.55 in	1.95 in	Front	6/1/1992
22	1380018807	LEAN CUISINE SWEDISH MEATBALLS	9.00OZ	1	K1	12	20	20	1.67	5.88 in	7.40 in	1.25 in	Front	12/12/1994
23	1380016686	LEAN CUISINE RAVIOLI CHEESE	8.50OZ	1	K1	12	20	20	1.67	5.88 in	7.40 in	1.25 in	Front	8/10/2006
24	1380016610	LEAN CUISINE GLAZED CHICKEN	8.50OZ	1	K1	12	20	20	1.67	5.88 in	7.40 in	1.26 in	Front	6/1/1992
25	1380016619	LEAN CUISINE SALISBURY STEAK w/ MAC & C...	9.50OZ	1	K1	12	20	20	1.67	5.88 in	7.40 in	1.26 in	Front	3/12/2003
26	1380016661	LEAN CUISINE ROAST TURKEY BREAST	9.75OZ	1	K1	12	20	20	1.67	5.88 in	7.40 in	1.26 in	Front	3/12/2003
27	7265500106	HEALTHY CHOICE CHKN SPICY GEN TSO STMR	10.30OZ	2	K1	8	22	22	2.75	7.45 in	7.55 in	1.95 in	Front	3/10/2014
28	7265500119	HEALTHY CHOICE CHKN CS HONEY BALSAMIC	9.90OZ	1	K1	8	11	11	1.38	7.45 in	7.55 in	1.95 in	Front	5/19/2015
29	2580002242	SMART ONES RIGATONI CHKN BROCC SMAR...	9.00OZ	1	K1	12	19	19	1.58	5.88 in	7.50 in	1.33 in	Front	8/10/2006
30	2580002020	SMART ONES FETTUCINI ALFREDO ENTR	9.25OZ	1	K1	12	19	19	1.58	5.88 in	7.50 in	1.33 in	Front	7/29/1992
31	2580000048	SMART MADE PESTO CHICKEN & ORZO	9.00OZ	1	K1/New	8	17	17	2.13	5.88 in	7.44 in	1.57 in	Front	1/24/2014
32	4227200080	AMYS ENCHILADA ORGANIC CHEESE	9.50OZ	1	K1	12	16	16	1.33	5.15 in	7.35 in	1.76 in	Front	4/19/2002
33	4227200045	AMYS RICE MAC N CHEESE	9.00OZ	1	K1	12	18	18	1.50	5.17 in	6.67 in	1.55 in	Front	4/18/2012
34	4227200030	AMYS MAC N CHEESE ORGANIC	9.00OZ	1	K1	12	18	18	1.50	5.17 in	6.67 in	1.55 in	Front	11/17/2005

SHELF:SHELF 4 MULT... WIDTH:300 in			MERCH HEIGHT:8.50 in			DEPTH:22 in			SPACE AVAIL:3.80 in					
Locatio...	UPC	NAME	SIZE	UOM	NOF	RSL	CS/PK	PACKOUT	Cases	H	W	D	Orientation	Add Date
1	3100065011	BERTOLLI CHICKEN PARM AND PENNE	24.00OZ	1	K1	4	6	6	1.50	7.85 in	4.75 in	3.20 in	Front	6/10/2013
2	3100090024	BERTOLLI CHICKEN MARGHERITA PENNE	24.00OZ	1	K1	4	6	6	1.50	7.85 in	4.75 in	3.20 in	Front	3/14/2013
3	3100065024	BERTOLLI LOBS RAV SEAFOOD BISQUE	24.00OZ	1	K1	4	6	6	1.50	7.85 in	4.75 in	3.20 in	Front	6/10/2013

FROZEN PREPARED PREPARED MEALS - 10 DOORS 30"

4	1450000711	BIRDS EYE VOILA CHICKEN GARLIC VOILA	21.00OZ	2	K1	6	18	3.00	8.30 in	6.80 in	2.40 in	Front	8/20/1998
5	1380044480	STOUFFERS RAVIOLI THREE CHESE	52.88OZ	1	K1	6	8	1.33	8.85 in	11.25 in	2.12 in	Top	6/16/2014
6	1380019023	STOUFFERS CHICKEN ENCHILADAS	57.00OZ	1	K1	6	8	1.33	10.70 in	13.00 in	1.95 in	Top	4/30/2001
7	1380019736	STOUFFERS BAKED ZITI	57.00OZ	1	K1	6	6	1.00	8.85 in	11.25 in	2.12 in	Top	6/16/2014
8	3100000730	BANQUET SALISBURY STEAK	11.88OZ	2	K1	12	46	3.83	6.30 in	8.65 in	1.06 in	Front	8/24/2015
9	7336906032	MICHELINAS ZAP FETT ALFREDO FOUR CHE...	8.00OZ	1	K1	12	19	1.58	5.70 in	7.15 in	1.35 in	Front	8/31/2005
10	7336906031	MICHELINAS ZAP MAC N CHEESE ENTR	8.00OZ	1	K1	12	19	1.58	5.70 in	7.15 in	1.35 in	Front	12/9/1996
11	7336907061	MICHELINAS ZAP WHEELS N CHEESE	8.00OZ	2	K1	12	38	3.17	5.70 in	7.15 in	1.35 in	Front	8/6/2008
12	7336906055	MICHELINAS ZAP SPAGHETTI TOMATO SAUC...	8.00OZ	1	K1	12	19	1.58	5.70 in	7.15 in	1.35 in	Front	11/30/1995
13	5100006501	SWANSON SALISBURY STEAK	16.00OZ	1	K1	8	13	1.63	8.00 in	10.00 in	1.60 in	Front	6/17/1992
14	5100006514	HUNGRY MAN CHICKEN FRIED CLASSIC	16.50OZ	1	K1	8	11	1.38	8.00 in	10.00 in	1.88 in	Front	2/4/2008
15	2113150475	MARIE CALLENDER CHKN FETT BROCC COM...	13.00OZ	2	K1	8	38	4.75	7.00 in	9.10 in	1.35 in	Front	10/9/1992
16	2113150560	MARIE CALLENDER MEATLOAF GRAVY W MA...	14.00OZ	1	K1	8	14	1.75	7.00 in	9.10 in	1.55 in	Front	5/19/2015
17	1380010393	STOUFFERS SPAGHETTI w/ MEATBALLS	13.00OZ	1	K1	12	20	1.67	5.90 in	7.40 in	1.25 in	Front	12/12/1994
18	1380012007	STOUFFERS SPAGHETTI w/ MEAT SAUCE	12.00OZ	1	K1	12	20	1.67	5.90 in	7.40 in	1.25 in	Front	8/30/2005
19	1380010342	STOUFFERS MAC & CHEESE	20.00OZ	2	K1	12	30	2.50	5.50 in	6.80 in	1.90 in	Front	6/1/1992
20	1380016668	LEAN CUISINE LASAGNA W MEAT SAUCE	10.50OZ	1	K1	12	22	1.83	5.05 in	6.85 in	1.20 in	Front	5/12/2009
21	1380018803	LEAN CUISINE CHKN FETTUCINI	9.25OZ	1	K1	12	20	1.67	5.88 in	7.40 in	1.25 in	Front	8/10/2006
22	1380016689	LEAN CUISINE BAKED CHICKEN	8.63OZ	1	K1	12	20	1.67	5.88 in	7.40 in	1.26 in	Front	5/19/2015
23	1380017124	LEAN CUISINE CHKN CARBONARA	9.00OZ	1	K1	12	20	1.67	5.88 in	7.40 in	1.26 in	Front	8/10/2006
24	1380015650	LEAN CUISINE STEAK PORTOBELLO	7.50OZ	1	K1	12	20	1.67	5.88 in	7.40 in	1.26 in	Front	2/24/2004
25	7265500104	HEALTHY CHOICE CHKN GLAZE SWT SESAM...	9.75OZ	1	K1	8	11	1.38	7.45 in	7.55 in	1.95 in	Front	3/10/2014
26	7265500102	HEALTHY CHOICE BEEF MERLOT STMR	9.50OZ	2	K1	8	22	2.75	7.45 in	7.55 in	1.95 in	Front	3/10/2014
27	2580001937	SMART ONES SPAGHETTI W MEAT SAUCE	11.50OZ	1	K1	12	19	1.58	5.88 in	7.50 in	1.33 in	Front	4/18/2012
28	2580002028	SMART ONES ANGEL HAIR MARINARA	9.00OZ	1	K1	12	19	1.58	5.88 in	7.50 in	1.33 in	Front	4/18/2012
29	2580002360	SMART ONES RICE BEAN SNTA FE ENTR	9.00OZ	2	K1	12	38	3.17	5.88 in	7.50 in	1.33 in	Front	8/3/1995
30	4227200057	AMYS ENCHILADA ORGANIC CHEESE	9.00OZ	1	K1	12	17	1.42	5.95 in	7.65 in	1.55 in	Front	11/17/2005
31	4227200081	AMYS ENCHILADA ORGANIC BLACK BEAN	9.50OZ	1	K1	12	16	1.33	5.15 in	7.35 in	1.76 in	Front	4/19/2002

SHELF:SHELF 5 MULT... WIDTH:300 in		MERCH HEIGHT:8.50 in			DEPTH:22 in			SPACE AVAIL:6.65 in						
Locatio...	UPC	NAME	SIZE	UOM	NOF	RSL	CS/PK	PACKOUT	Cases	H	W	D	Orientation	Add Date
1	3100065014	BERTOLLI CHICKEN ALLA VODKA FARALLE	24.00OZ		1	K1	4	6	1.50	7.85 in	4.75 in	3.20 in	Front	6/10/2013
2	3100065008	BERTOLLI ITALIAN SAUSAGE RIGATONI	24.00OZ		2	K1	4	12	3.00	7.85 in	4.75 in	3.20 in	Front	6/10/2013
3	1450000717	BIRDS EYE VOILA CHICKEN ALFREDO VOILA	21.00OZ		2	K1	6	18	3.00	8.30 in	6.80 in	2.40 in	Front	1/29/1999
4	1380023260	STOUFFERS LASAGNA W MEAT SAUCE	57.00OZ		2	K1	6	12	2.00	8.85 in	11.25 in	2.12 in	Top	2/14/2005
5	1380019003	STOUFFERS MAC N CHEESE ENTREE	76.00OZ		1	K1	6	8	1.33	10.67 in	13.20 in	1.90 in	Base	4/6/2004
6	3100011303	BANQUET TURKEY N GRVY SLCD ENTR	26.00OZ		1	K1	6	13	2.17	7.55 in	9.25 in	1.58 in	Front	6/20/1994
7	3100000715	BANQUET SWEEDISH MEATBALLS	10.45OZ		1	K1	12	23	1.92	6.30 in	8.65 in	1.06 in	Front	8/24/2015
8	3100010101	BANQUET POT PIE CHICKEN	7.00OZ		5	K1	24	120	5.00	5.15 in	5.15 in	1.36 in	Front	6/11/1992
9	3100044995	BANQUET SALISBURY STEAK DEEP DISH	12.50OZ		2	K1	24	48	2.00	5.15 in	5.15 in	1.36 in	Front	5/22/2014
10	5100006276	SWANSON CHICKEN FRIED BNLSS	16.00OZ		2	K1	8	26	3.25	8.00 in	10.00 in	1.60 in	Front	9/27/2001
11	2113144777	MARIE CALLENDER CHKN COUNTRY FRIED	16.00OZ		2	K1/New	8	28	3.50	7.00 in	9.10 in	1.55 in	Front	6/28/2016
12	2113150111	MARIE CALLENDER POT PIE CHICKEN	10.00OZ		2	K1	12	32	2.67	5.15 in	5.20 in	1.82 in	Front	4/12/2006
13	1380010070	STOUFFERS SALISBURY STEAK	9.62OZ		1	K1	12	20	1.67	5.90 in	7.40 in	1.25 in	Front	3/12/2003
14	1380010072	STOUFFERS MEATLOAF	9.78OZ		1	K1	12	20	1.67	5.90 in	7.40 in	1.25 in	Front	6/1/1992
15	1380010340	STOUFFERS MAC & CHEESE	12.00OZ		2	K1	12	44	3.67	5.10 in	6.90 in	1.20 in	Front	6/1/1992
16	1380015191	LEAN CUISINE PIZZA DELUXE	6.12OZ		1	K1	12	26	2.17	4.00 in	9.15 in	1.62 in	Front	11/6/2008
17	1380055667	LEAN CUISINE SPRING ROLL CHKN GARLIC	8.00OZ		1	K1	12	20	1.67	5.88 in	7.40 in	1.26 in	Front	11/19/2010
18	1380017000	LEAN CUISINE PANINI CHICKEN CLUB	6.00OZ		1	K1	8	14	1.75	7.05 in	7.05 in	1.55 in	Front	1/12/2006
19	1380017300	LEAN CUISINE PANINI CHKN SPINACH MSHRM	6.00OZ		1	K1	8	14	1.75	7.05 in	7.05 in	1.55 in	Front	1/5/2006
20	7265500110	HEALTHY CHOICE BEEF TERIYAKI ASIAN STMR	9.50OZ		1	K1	8	11	1.38	7.45 in	7.55 in	1.95 in	Front	3/10/2014
21	7265500105	HEALTHY CHOICE CHKN MARGHERITA STMR	9.50OZ		1	K1	8	11	1.38	7.45 in	7.55 in	1.95 in	Front	3/10/2014
22	7265500101	HEALTHY CHOICE CHKN MARINARA STMR	9.50OZ		1	K1	8	11	1.38	7.45 in	7.55 in	1.95 in	Front	3/10/2014
23	7265500115	HEALTHY CHOICE CHKN ASIAN PINEAPPLE	9.90OZ		1	K1	8	11	1.38	7.45 in	7.55 in	1.95 in	Front	5/19/2015
24	2580002013	SMART ONES CHICKEN FETTUCINI	10.00OZ		1	K1	12	19	1.58	5.88 in	7.50 in	1.33 in	Front	3/9/2009
25	2580001965	SMART ONES CHICKEN ENCHILADA SUIZA	9.00OZ		2	K1	12	38	3.17	5.88 in	7.50 in	1.33 in	Front	8/30/2005
26	4227200924	AMYS PAD THAI	9.50OZ		1	K1	12	17	1.42	5.93 in	7.65 in	1.54 in	Front	7/11/2014

FROZEN PREPARED PREPARED MEALS - 10 DOORS 30"

27 4227200058 AMYS PANEER INDIAN MATTAR 10.00OZ 1 K1 12 17 1.42 5.93 in 7.65 in 1.54 in Front 7/9/2008

SHELF:SHELF 6 BASE ... WIDTH:300 in			MERCH HEIGHT:10.00 in			DEPTH:25 in			SPACE AVAIL:3.32 in					
Locatio...	UPC	NAME	SIZE	UOM	NOF	RSL	CS/PK	PACKOUT	Cases	H	W	D	Orientation	Add Date
1	3100065012	BERTOLLI CHICKEN FLORENTINE FARFALLE	24.00OZ		1	K1	4	7	1.75	7.85 in	4.75 in	3.20 in	Front	6/10/2013
2	3100065009	BERTOLLI CHICKEN ALFREDO PENNE	24.00OZ		1	K1	4	7	1.75	7.85 in	4.75 in	3.20 in	Front	6/10/2013
3	1450001421	BIRDS EYE VOILA GARLIC CHICKEN VOILA FA...	42.00OZ		1	K1	4	6	1.50	8.30 in	9.40 in	3.85 in	Front	2/28/2011
4	1450001419	BIRDS EYE VOILA CHICKEN ALFREDO VOILA ...	42.00OZ		1	K1	4	6	1.50	8.30 in	9.40 in	3.85 in	Front	2/28/2011
5	1380055131	STOUFFERS LASAGNA W MEAT FAMILY	90.00OZ		1	K1	6	6	1.00	10.67 in	13.20 in	2.40 in	Base	2/11/2009
6	1380020031	STOUFFERS LASAGNA ITALIANO	90.00OZ		1	K1	6	6	1.00	10.67 in	13.20 in	2.40 in	Base	4/27/2007
7	3100011305	BANQUET SALSBURY STEAK W GRAVY	27.00OZ		3	K1	6	54	9.00	7.55 in	9.15 in	1.58 in	Front	6/11/1992
8	3100010103	BANQUET POT PIE TURKEY	7.00OZ		4	K1	24	104	4.33	5.15 in	5.15 in	1.36 in	Front	6/11/1992
9	3100010102	BANQUET POT PIE BEEF	7.00OZ		3	K1	24	78	3.25	5.15 in	5.15 in	1.36 in	Front	6/11/1992
10	5100006261	HUNGRY MAN TURKEY BREAST DINNER	16.00OZ		2	K1	8	30	3.75	8.00 in	10.00 in	1.60 in	Front	9/27/2001
11	2113150126	MARIE CALLENDER BEEF POT PIE	16.00OZ		2	K1	12	30	2.50	5.80 in	5.85 in	2.25 in	Front	5/29/2012
12	2113150124	MARIE CALLENDER CHICKEN POT PIE	16.00OZ		2	K1	12	30	2.50	5.80 in	5.85 in	2.25 in	Front	5/29/2012
13	2113130104	MARIE CALLENDER POT PIE CHICKEN 4 CT	40.00OZ		1	K1	6	8	1.33	5.15 in	10.40 in	4.26 in	Top	7/27/2005
14	1380010170	STOUFFERS BAKED CHICKEN BREAST	8.70OZ		1	K1	12	24	2.00	5.90 in	7.40 in	1.25 in	Front	6/1/1992
15	1380074800	STOUFFERS MAC N CHEESE CUPS	12.00OZ		1	K1	6	18	3.00	2.55 in	7.50 in	3.75 in	Front	6/6/2014
16	1380062742	STOUFFERS WHITE CHEDDAR MAC & CHEESE	12.00OZ		1	K1	12	24	2.00	5.10 in	6.78 in	1.20 in	Front	5/18/2015
17	1380010018	STOUFFERS CREAMED CHIPPED BEEF	11.00OZ		2	K1	12	48	4.00	5.10 in	6.20 in	1.25 in	Front	6/1/1992
18	1380010635	STOUFFERS POT PIE CHICKEN WHT MT	16.00OZ		1	K1	12	14	1.17	5.95 in	6.00 in	2.32 in	Front	11/5/2007
19	1380004717	LEAN CUISINE PIZZA PEPPERONI	6.00OZ		2	K1	8	32	4.00	7.05 in	7.05 in	1.50 in	Front	6/24/2003
20	1380013520	LEAN CUISINE PIZZA SPINACH MUSHROOM	6.12OZ		1	K1	8	19	2.38	7.05 in	7.05 in	1.50 in	Front	6/4/2004
21	7265545844	HEALTHY CHOICE SALISBURY STEAK	11.50OZ		1	K1	12	18	1.50	7.05 in	9.05 in	1.33 in	Front	9/11/2013
22	5010045951	HEALTHY CHOICE TURKEY BRST TRAD CLSS...	10.50OZ		1	K1	12	18	1.50	7.05 in	9.05 in	1.33 in	Front	6/15/1992
23	5010045954	HEALTHY CHOICE CHKN PARM TRAD CLSSCS	11.60OZ		1	K1	12	18	1.50	7.05 in	9.05 in	1.33 in	Front	6/15/1992
24	2580002320	SMART ONES TURKEY BRST SLO RSTD ENTR	10.00OZ		1	K1	12	22	1.83	5.88 in	7.50 in	1.33 in	Front	4/14/1999
25	2580002910	SMART ONES BEEF POT ROAST	9.00OZ		1	K1	12	22	1.83	5.88 in	7.55 in	1.33 in	Front	7/20/2004
26	2580002295	SMART ONES SALISBURY STEAK	9.50OZ		1	K1	12	22	1.83	5.88 in	7.55 in	1.33 in	Front	4/18/2012
27	4227200163	AMYS CASSEROLE BOWL MEXICAN	9.50OZ		1	K1	12	16	1.33	6.82 in	6.85 in	1.88 in	Front	4/18/2012
28	4227200176	AMYS BOWL TORTELLINI PESTO	9.50OZ		1	K1	12	16	1.33	6.82 in	6.85 in	1.88 in	Front	2/27/2006