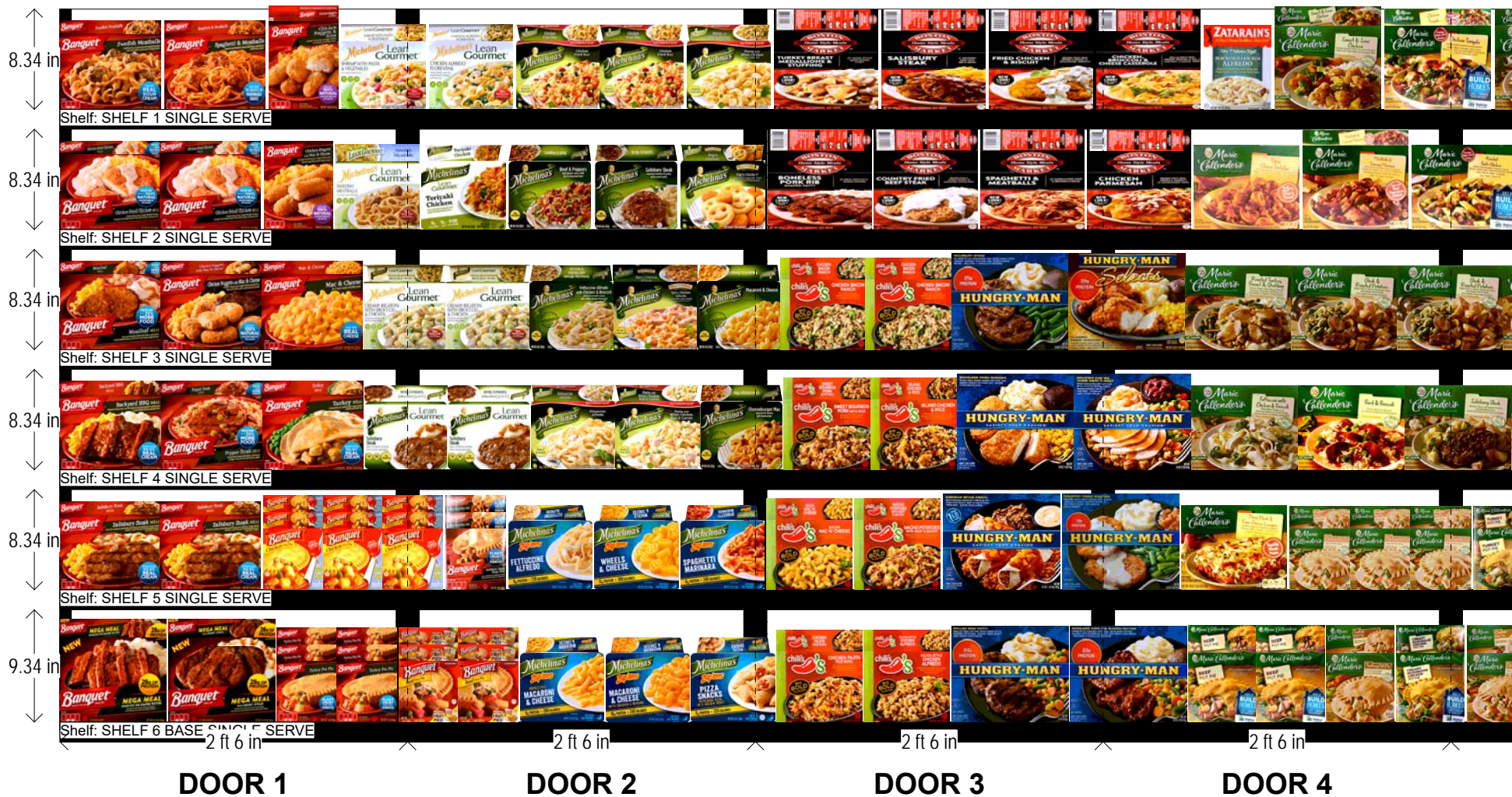


# FROZEN PREPARED SINGLE SERVE MEALS - 6 DOORS 30"

HQ DeCA PLANOGRAM

CLASS 2 STORES



Left-right

HQ DeCA/MBU PLANOGRAM APPROVED BY JAMES TAYLOR/ IVEENA HENDERSON

18 MAY 2017

ITEM SHELF POSITIONING MUST NOT BE CHANGED AT ANY TIME. PRODUCT FACINGS MAY BE ADJUSTED TO MEET CUSTOMER DEMAND USING STORE SPECIFIC DATA BUT MUST BE APPROVED BY HEADQUARTERS BEFORE IMPLEMENTING AT STORE LEVEL

Frozen PMeals  
Single Serve 03-  
02-16.psa

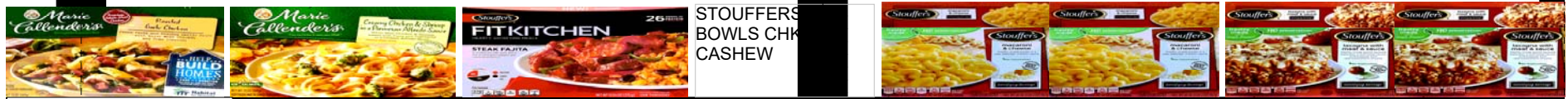
# FROZEN PREPARED SINGLE SERVE MEALS - 6 DOORS 30"

HQ DeCA PLANOGRAM

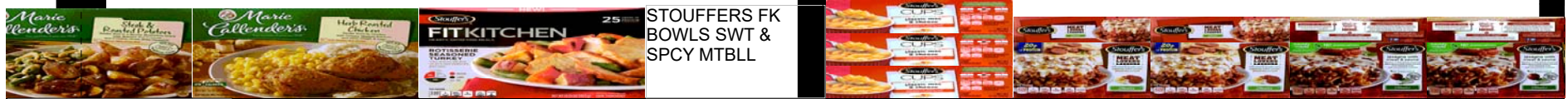
CLASS 2 STORES



Shelf: SHELF 1 SINGLE SERVE



Shelf: SHELF 2 SINGLE SERVE



Shelf: SHELF 3 SINGLE SERVE



Shelf: SHELF 4 SINGLE SERVE



Shelf: SHELF 5 SINGLE SERVE



Shelf: SHELF 6 BASE SINGLE SERVE

2 ft 6 in

2 ft 6 in

DOOR 5

DOOR 6

Left-right

HQ DeCA/MBU PLANOGRAM APPROVED BY JAMES TAYLOR/ IVEENA HENDERSON

18 MAY 2017

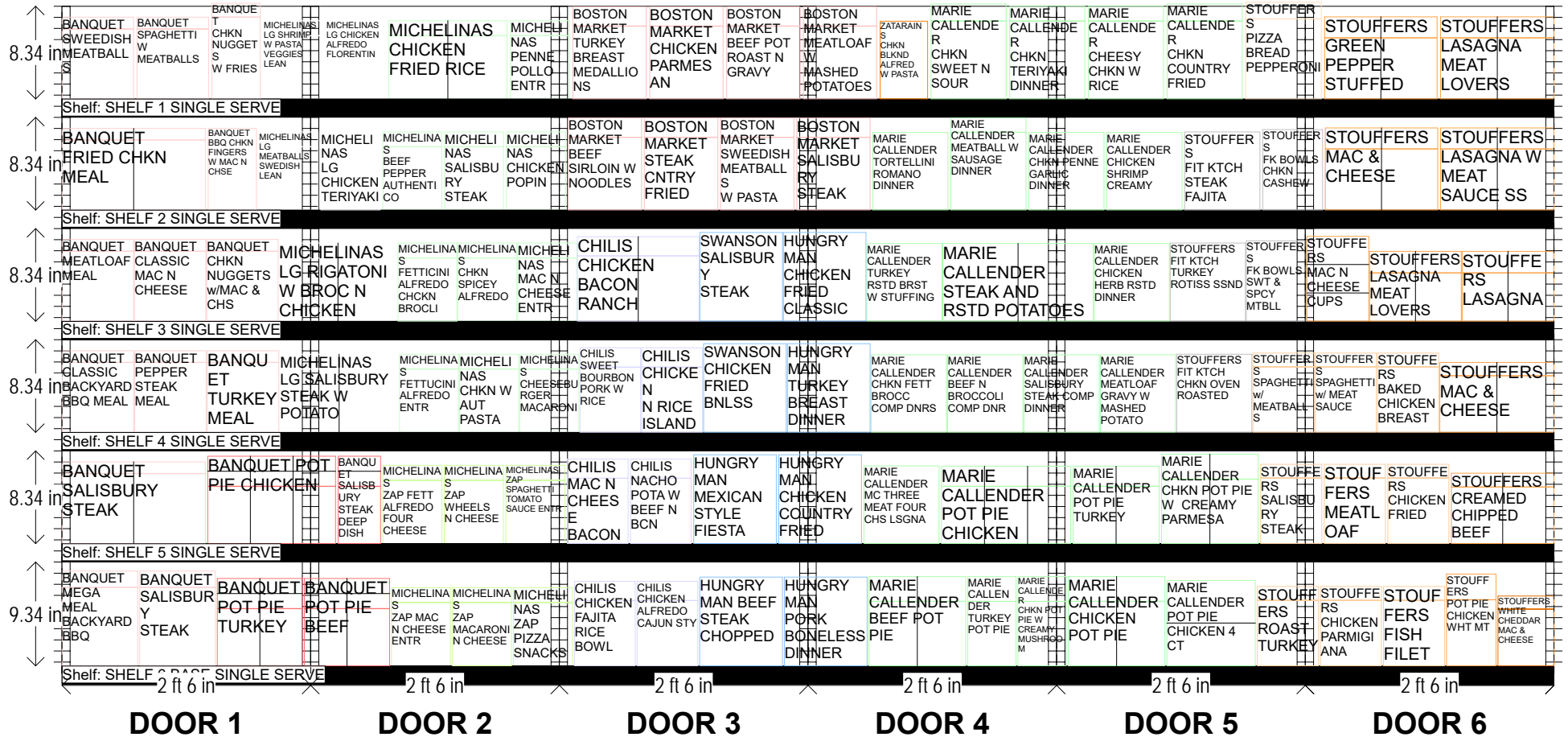
ITEM SHELF POSITIONING MUST NOT BE CHANGED AT ANY TIME. PRODUCT FACINGS MAY BE ADJUSTED TO MEET CUSTOMER DEMAND USING STORE SPECIFIC DATA BUT MUST BE APPROVED BY HEADQUARTERS BEFORE IMPLEMENTING AT STORE LEVEL

Frozen PMeals  
Single Serve 03-02-16.psa

# FROZEN PREPARED SINGLE SERVE MEALS - 6 DOORS 30"

## HQ DeCA PLANOGRAM

### CLASS 2 STORES



Left-right HQ DeCA/MBU PLANOGRAM APPROVED BY JAMES TAYLOR/ IVEENA HENDERSON

18 MAY 2017 ITEM SHELF POSITIONING MUST NOT BE CHANGED AT ANY TIME. PRODUCT FACINGS MAY BE ADJUSTED TO MEET CUSTOMER DEMAND USING STORE SPECIFIC DATA BUT MUST BE APPROVED BY HEADQUARTERS BEFORE IMPLEMENTING AT STORE LEVEL

Frozen PMeals Single Serve 03-02-16.psa

# FROZEN PREPARED SINGLE SERVE MEALS - 6 DOORS 30"

SHELF:SHELF 1 SING...		WIDTH:180 in			MERCH HEIGHT:8.75 in			DEPTH:22 in			SPACE AVAIL:6.97 in				
Locatio...	UPC	NAME	SIZE	UOM	NOF	RSL	CS/PK	PACKOUT	Cases	H	W	D	Orientation	Add Date	
1	3100000715	BANQUET SWEEDISH MEATBALLS	10.45OZ		1	K1	12	23	1.92	6.30 in	8.65 in	1.06 in	Front	8/24/2015	
2	3100000722	BANQUET SPAGHETTI W MEATBALLS	10.00OZ		1	K1	12	23	1.92	6.30 in	8.65 in	1.06 in	Front	8/24/2015	
3	3100000708	BANQUET CHKN NUGGETS W FRIES	4.85OZ		1	K1	12	19	1.58	7.36 in	5.86 in	1.25 in	Front	8/24/2015	
4	71785410628	MICHELINAS LG SHRIMP W PASTA VEGGIES ...	8.00OZ		1	K1	12	19	1.58	5.70 in	7.15 in	1.35 in	Front	1/16/2003	
5	71785410623	MICHELINAS LG CHICKEN ALFREDO FLOREN...	8.50OZ		1	K1	12	19	1.58	5.70 in	7.15 in	1.35 in	Front	1/16/2003	
6	71785430551	MICHELINAS CHICKEN FRIED RICE	8.00OZ		2	K1	12	38	3.17	5.70 in	7.15 in	1.35 in	Front	10/20/2009	
7	71785410504	MICHELINAS PENNE POLLO ENTR	9.00OZ		1	K1	12	19	1.58	5.70 in	7.15 in	1.35 in	Front	6/1/1992	
8	73891202235	BOSTON MARKET TURKEY BREAST MEDALLI...	14.00OZ		1	K1	8	15	1.88	6.55 in	8.88 in	1.75 in	Front	4/18/2012	
9	73891202232	BOSTON MARKET CHICKEN PARMESAN	13.10OZ		1	K1	8	15	1.88	6.55 in	8.88 in	1.75 in	Front	4/18/2012	
10	73891202234	BOSTON MARKET BEEF POT ROAST N GRAVY	15.00OZ		1	K1	8	15	1.88	6.55 in	8.88 in	1.75 in	Front	6/10/2011	
11	73891202230	BOSTON MARKET MEATLOAF W WASHED PO...	14.00OZ		1	K1	8	15	1.88	6.55 in	8.88 in	1.75 in	Front	6/10/2011	
12	7142900246	ZATARAINS CHKN BLKND ALFRED W PASTA	10.50OZ		1	K2	8	11	1.38	7.00 in	5.75 in	1.90 in	Front	11/7/2005	
13	2113150645	MARIE CALLENDER CHKN SWEET N SOUR	14.00OZ		1	K2	8	17	2.13	7.00 in	9.10 in	1.55 in	Front	9/17/2014	
14	2113180040	MARIE CALLENDER CHKN TERIYAKI DINNER	13.00OZ		1	K1	8	19	2.38	7.00 in	9.10 in	1.35 in	Front	5/6/2014	
15	2113150469	MARIE CALLENDER CHEESY CHKN W RICE	13.00OZ		1	K1	8	19	2.38	7.00 in	9.10 in	1.35 in	Front	5/19/2015	
16	2113144777	MARIE CALLENDER CHKN COUNTRY FRIED	16.00OZ		1	K1	8	17	2.13	7.00 in	9.10 in	1.55 in	Front	6/28/2016	
17	1380015173	STOUFFERS PIZZA BREAD PEPPERONI	11.25OZ		1	K1	10	17	1.70	7.20 in	9.15 in	1.50 in	Front	6/1/1992	
18	1380010067	STOUFFERS GREEN PEPPER STUFFED	15.50OZ		2	K2	12	30	2.50	5.50 in	6.80 in	1.90 in	Front	6/1/1992	
19	1380086980	STOUFFERS LASAGNA MEAT LOVERS	18.00OZ		2	K1	12	30	2.50	5.50 in	6.85 in	1.90 in	Front	3/20/2014	

SHELF:SHELF 2 SING...		WIDTH:180 in			MERCH HEIGHT:8.50 in			DEPTH:22 in			SPACE AVAIL:5.52 in				
Locatio...	UPC	NAME	SIZE	UOM	NOF	RSL	CS/PK	PACKOUT	Cases	H	W	D	Orientation	Add Date	
1	3100010976	BANQUET FRIED CHKN MEAL	8.00OZ		2	K1	12	46	3.83	6.30 in	8.65 in	1.06 in	Front	5/18/2015	
2	3100000717	BANQUET BBQ CHKN FINGERS W MAC N CHSE	6.50OZ		1	K1	12	17	1.42	7.36 in	5.86 in	1.25 in	Front	8/24/2015	
3	71785410629	MICHELINAS LG MEATBALLS SWEDISH LEAN	8.00OZ		1	K2	12	19	1.58	5.70 in	7.15 in	1.35 in	Front	1/16/2003	
4	71785410689	MICHELINAS LG CHICKEN TERIYAKI	8.00OZ		1	K2	12	19	1.58	5.70 in	7.15 in	1.35 in	Front	4/18/2012	
5	71785410555	MICHELINAS BEEF PEPPER AUTHENTICO	8.00OZ		1	K1	12	19	1.58	5.70 in	7.15 in	1.35 in	Front	5/19/2015	
6	71785410557	MICHELINAS SALISBURY STEAK	8.00OZ		1	K1	12	19	1.58	5.70 in	7.15 in	1.35 in	Front	11/21/2012	
7	71785415209	MICHELINAS CHICKEN POPIN	5.00OZ		1	K2	12	19	1.58	5.70 in	7.15 in	1.35 in	Front	1/25/2005	
8	73891202233	BOSTON MARKET BEEF SIRLOIN W NOODLES	14.00OZ		1	K1	8	15	1.88	6.55 in	8.88 in	1.75 in	Front	6/10/2011	
9	73891202241	BOSTON MARKET STEAK CNTRY FRIED	13.20OZ		1	K2	8	15	1.88	6.55 in	8.88 in	1.75 in	Front	5/19/2015	
10	73891202236	BOSTON MARKET SWEEDISH MEATBALLS W ...	13.10OZ		1	K2	8	15	1.88	6.55 in	8.88 in	1.75 in	Front	5/19/2015	
11	73891202231	BOSTON MARKET SALISBURY STEAK	14.50OZ		1	K1	8	15	1.88	6.55 in	8.88 in	1.75 in	Front	6/10/2011	
12	2113180035	MARIE CALLENDER TORTELLINI ROMANO DI...	13.00OZ		1	K2	8	16	2.00	7.00 in	9.10 in	1.35 in	Front	5/6/2014	
13	2113180036	MARIE CALLENDER MEATBALL W SAUSAGE ...	13.00OZ		1	K2	8	19	2.38	7.00 in	9.10 in	1.31 in	Front	5/6/2014	
14	2113180037	MARIE CALLENDER CHKN PENNE GARLIC DI...	13.00OZ		1	K2	8	16	2.00	7.00 in	9.10 in	1.35 in	Front	5/6/2014	
15	2113150812	MARIE CALLENDER CHICKEN SHRIMP CREAMY	13.00OZ		1	K2	8	16	2.00	7.00 in	9.10 in	1.35 in	Front	5/19/2008	
16	1380077151	STOUFFERS FIT KTCH STEAK FAJITA	13.25OZ		1	K1	12	15	1.25	7.05 in	9.10 in	1.45 in	Front	5/18/2015	
17	1380010155	STOUFFERS FK BOWLS CHKN CASHEW	12.00OZ		1	K2/New	8	11	1.38	7.25 in	7.25 in	1.90 in	Front	3/31/2017	
18	1380010342	STOUFFERS MAC & CHEESE	20.00OZ		2	K1	12	30	2.50	5.50 in	6.80 in	1.90 in	Front	6/1/1992	
19	1380055812	STOUFFERS LASAGNA W MEAT SAUCE SS	19.00OZ		2	K1	12	30	2.50	5.50 in	6.85 in	1.90 in	Front	5/3/2011	

SHELF:SHELF 3 SING...		WIDTH:180 in			MERCH HEIGHT:9.00 in			DEPTH:22 in			SPACE AVAIL:1.15 in				
Locatio...	UPC	NAME	SIZE	UOM	NOF	RSL	CS/PK	PACKOUT	Cases	H	W	D	Orientation	Add Date	
1	3100000731	BANQUET MEATLOAF MEAL	11.88OZ		1	K1	12	23	1.92	6.30 in	8.65 in	1.06 in	Front	8/24/2015	
2	3100080921	BANQUET CLASSIC MAC N CHEESE	7.40OZ		1	K1	12	23	1.92	6.30 in	8.65 in	1.06 in	Front	9/22/2016	
3	3100080922	BANQUET CHKN NUGGETS w/MAC & CHS	10.00OZ		1	K1	12	23	1.92	6.30 in	8.65 in	1.06 in	Front	9/22/2016	
4	71785410669	MICHELINAS LG RIGATONI W BROCC N CHICKEN	8.00OZ		2	K1	12	38	3.17	5.70 in	7.15 in	1.35 in	Front	12/21/2009	
5	71785410521	MICHELINAS FETTICINI ALFREDO CHCKN BR...	8.00OZ		1	K1	12	19	1.58	5.70 in	7.15 in	1.35 in	Front	12/7/2000	
6	71785410598	MICHELINAS CHKN SPICEY ALFREDO	8.00OZ		1	K1	12	19	1.58	5.70 in	7.15 in	1.35 in	Front	5/19/2015	
7	71785410515	MICHELINAS MAC N CHEESE ENTR	8.00OZ		1	K1	12	19	1.58	5.70 in	7.15 in	1.35 in	Front	6/1/1992	
8	71785447011	CHILIS CHICKEN BACON RANCH	10.00OZ		2	K2	8	30	3.75	5.88 in	7.35 in	1.74 in	Front	4/22/2014	
9	5100006501	SWANSON SALISBURY STEAK	16.00OZ		1	K1	8	13	1.63	8.00 in	10.00 in	1.60 in	Front	6/17/1992	
10	5100006514	HUNGRY MAN CHICKEN FRIED CLASSIC	16.50OZ		1	K1	8	11	1.38	8.00 in	10.00 in	1.88 in	Front	2/4/2008	

# FROZEN PREPARED SINGLE SERVE MEALS - 6 DOORS 30"

11	2113150660	MARIE CALLENDER TURKEY RSTD BRST W S...	14.00OZ	1	K1	8	14	1.75	7.00 in	9.10 in	1.55 in	Front	5/23/2001
12	2113150706	MARIE CALLENDER STEAK AND RSTD POTAT...	13.60OZ	2	K1	8	28	3.50	7.00 in	9.10 in	1.55 in	Front	2/7/2008
13	2113150630	MARIE CALLENDER CHICKEN HERB RSTD DI...	14.00OZ	1	K2	8	14	1.75	7.00 in	9.10 in	1.55 in	Front	2/7/2008
14	1380091355	STOUFFERS FIT KTCH TURKEY ROTISS SSND	14.25OZ	1	K1	12	15	1.25	7.05 in	9.10 in	1.45 in	Front	5/18/2015
15	1380048328	STOUFFERS FK BOWLS SWT & SPCY MTBLL	12.00OZ	1	K1/New	8	11	1.38	7.25 in	9.10 in	1.90 in	Front	3/31/2017
16	1380074800	STOUFFERS MAC N CHEESE CUPS	12.00OZ	1	K1	6	15	2.50	2.55 in	7.50 in	3.75 in	Front	6/6/2014
17	1380079188	STOUFFERS LASAGNA MEAT LOVERS	10.00OZ	2	K2	12	32	2.67	4.35 in	5.55 in	1.95 in	Front	3/20/2014
18	1380010321	STOUFFERS LASAGNA	10.50OZ	2	K1	12	32	2.67	4.35 in	5.55 in	1.95 in	Front	6/1/1992

SHELF:SHELF 4 SING... WIDTH:180 in MERCH HEIGHT:9.00 in DEPTH:22 in SPACE AVAIL:2.10 in

Locatio...	UPC	NAME	SIZE	UOM	NOF	RSL	CS/PK	PACKOUT	Cases	H	W	D	Orientation	Add Date
1	3100000738	BANQUET CLASSIC BACKYARD BBQ MEAL	10.45OZ		1	K1	12	23	1.92	6.30 in	8.65 in	1.06 in	Front	8/24/2015
2	3100000718	BANQUET PEPPER STEAK MEAL	10.00OZ		1	K2	12	23	1.92	6.30 in	8.65 in	1.06 in	Front	8/24/2015
3	3100000737	BANQUET TURKEY MEAL	10.00OZ		1	K1	12	23	1.92	6.30 in	8.65 in	1.06 in	Front	8/24/2015
4	71785410630	MICHELINAS LG SALISBURY STEAK W POTATO	7.50OZ		2	K1	12	38	3.17	5.70 in	7.15 in	1.35 in	Front	2/13/2006
5	71785410501	MICHELINAS FETTUCINI ALFREDO ENTR	9.00OZ		1	K1	12	19	1.58	5.70 in	7.15 in	1.35 in	Front	6/1/1992
6	71785415109	MICHELINAS CHKN W AUT PASTA	8.00OZ		1	K2	12	19	1.58	5.70 in	7.15 in	1.35 in	Front	5/19/2015
7	71785410574	MICHELINAS CHEESEBURGER MACARONI	8.00OZ		1	K2	12	19	1.58	5.70 in	7.15 in	1.35 in	Front	8/9/2006
8	71785447006	CHILIS SWEET BOURBON PORK W RICE	10.00OZ		1	K2	8	15	1.88	5.88 in	7.35 in	1.74 in	Front	5/18/2015
9	71785447005	CHILIS CHICKEN N RICE ISLAND	10.00OZ		1	K2	8	15	1.88	5.88 in	7.35 in	1.74 in	Front	4/22/2014
10	5100006276	SWANSON CHICKEN FRIED BNLS	16.00OZ		1	K1	8	13	1.63	8.00 in	10.00 in	1.60 in	Front	9/27/2001
11	5100006261	HUNGRY MAN TURKEY BREAST DINNER	16.00OZ		1	K1	8	13	1.63	8.00 in	10.00 in	1.60 in	Front	9/27/2001
12	2113150475	MARIE CALLENDER CHKN FETT BROCC COM...	13.00OZ		1	K1	8	16	2.00	7.00 in	9.10 in	1.35 in	Front	10/9/1992
13	2113150817	MARIE CALLENDER BEEF N BROCCOLI COMP...	13.00OZ		1	K2	8	16	2.00	7.00 in	9.10 in	1.35 in	Front	6/3/2008
14	2113150675	MARIE CALLENDER SALISBURY STEAK COMP...	14.00OZ		1	K2	8	14	1.75	7.00 in	9.10 in	1.55 in	Front	4/12/2006
15	2113150560	MARIE CALLENDER MEATLOAF GRAVY W MA...	14.00OZ		1	K1	8	14	1.75	7.00 in	9.10 in	1.55 in	Front	5/19/2015
16	1380029346	STOUFFERS FIT KTCH CHKN OVEN ROASTED	13.25OZ		1	K1	12	15	1.25	7.05 in	9.10 in	1.45 in	Front	5/18/2015
17	1380010393	STOUFFERS SPAGHETTI w/ MEATBALLS	13.00OZ		1	K1	12	20	1.67	5.90 in	7.40 in	1.25 in	Front	12/12/1994
18	1380012007	STOUFFERS SPAGHETTI w/ MEAT SAUCE	12.00OZ		1	K1	12	20	1.67	5.90 in	7.40 in	1.25 in	Front	8/30/2005
19	1380010170	STOUFFERS BAKED CHICKEN BREAST	8.70OZ		1	K1	12	20	1.67	5.90 in	7.40 in	1.25 in	Front	6/1/1992
20	1380010340	STOUFFERS MAC & CHEESE	12.00OZ		2	K1	12	44	3.67	5.10 in	6.90 in	1.20 in	Front	6/1/1992

SHELF:SHELF 5 SING... WIDTH:180 in MERCH HEIGHT:8.50 in DEPTH:22 in SPACE AVAIL:4.55 in

Locatio...	UPC	NAME	SIZE	UOM	NOF	RSL	CS/PK	PACKOUT	Cases	H	W	D	Orientation	Add Date
1	3100000730	BANQUET SALISBURY STEAK	11.88OZ		2	K1	12	46	3.83	6.30 in	8.65 in	1.06 in	Front	8/24/2015
2	3100010101	BANQUET POT PIE CHICKEN	7.00OZ		3	K1	24	72	3.00	5.15 in	5.15 in	1.36 in	Front	6/11/1992
3	3100044995	BANQUET SALISBURY STEAK DEEP DISH	12.50OZ		1	K1	24	24	1.00	5.15 in	5.15 in	1.36 in	Front	5/22/2014
4	7336906032	MICHELINAS ZAP FETT ALFREDO FOUR CHE...	8.00OZ		1	K1	12	19	1.58	5.70 in	7.15 in	1.35 in	Front	8/31/2005
5	7336907061	MICHELINAS ZAP WHEELS N CHEESE	8.00OZ		1	K1	12	19	1.58	5.70 in	7.15 in	1.35 in	Front	8/6/2008
6	7336906055	MICHELINAS ZAP SPAGHETTI TOMATO SAUC...	8.00OZ		1	K1	12	19	1.58	5.70 in	7.15 in	1.35 in	Front	11/30/1995
7	71785447012	CHILIS MAC N CHEESE BACON	10.00OZ		1	K1	8	15	1.88	5.88 in	7.35 in	1.74 in	Front	4/22/2014
8	71785447013	CHILIS NACHO POTA W BEEF N BCN	10.00OZ		1	K2	8	15	1.88	5.88 in	7.35 in	1.74 in	Front	5/18/2015
9	5100006509	HUNGRY MAN MEXICAN STYLE FIESTA	17.00OZ		1	K2	8	13	1.63	8.00 in	10.00 in	1.60 in	Front	6/17/1992
10	5100011860	HUNGRY MAN CHICKEN COUNTRY FRIED	16.00OZ		1	K2	8	13	1.63	8.00 in	10.00 in	1.60 in	Front	10/7/2010
11	2113180048	MARIE CALLENDER MC THREE MEAT FOUR C...	18.00OZ		1	K1	8	14	1.75	7.00 in	9.10 in	1.55 in	Front	6/23/2016
12	2113150111	MARIE CALLENDER POT PIE CHICKEN	10.00OZ		3	K1	12	48	4.00	5.15 in	5.20 in	1.82 in	Front	4/12/2006
13	2113150114	MARIE CALLENDER POT PIE TURKEY	10.00OZ		2	K2	12	32	2.67	5.15 in	5.20 in	1.82 in	Front	8/9/2006
14	2113150130	MARIE CALLENDER CHKN POT PIE W CREAM...	16.00OZ		2	K2	12	24	2.00	5.80 in	5.85 in	2.25 in	Front	5/18/2015
15	1380010070	STOUFFERS SALISBURY STEAK	9.62OZ		1	K1	12	20	1.67	5.90 in	7.40 in	1.25 in	Front	3/12/2003
16	1380010072	STOUFFERS MEATLOAF	9.78OZ		1	K1	12	20	1.67	5.90 in	7.40 in	1.25 in	Front	6/1/1992
17	1380010039	STOUFFERS CHICKEN FRIED	8.87OZ		1	K2	12	20	1.67	5.90 in	7.40 in	1.25 in	Front	3/3/2009
18	1380010018	STOUFFERS CREAMED CHIPPED BEEF	11.00OZ		2	K1	12	42	3.50	5.10 in	6.20 in	1.25 in	Front	6/1/1992

SHELF:SHELF 6 BASE ... WIDTH:180 in MERCH HEIGHT:10.00 in DEPTH:25 in SPACE AVAIL:4.17 in

Locatio...	UPC	NAME	SIZE	UOM	NOF	RSL	CS/PK	PACKOUT	Cases	H	W	D	Orientation	Add Date
1	3100000721	BANQUET MEGA MEAL BACKYARD BBQ	14.25OZ		1	K2	8	19	2.38	7.05 in	9.15 in	1.50 in	Front	9/1/2015
2	3100000725	BANQUET SALISBURY STEAK	15.25OZ		1	K2	8	19	2.38	7.05 in	9.15 in	1.50 in	Front	9/1/2015

## FROZEN PREPARED SINGLE SERVE MEALS - 6 DOORS 30"

3	3100010103	BANQUET POT PIE TURKEY	7.00OZ	2	K1	24	52	2.17	5.15 in	5.15 in	1.36 in	Front	6/11/1992
4	3100010102	BANQUET POT PIE BEEF	7.00OZ	2	K1	24	52	2.17	5.15 in	5.15 in	1.36 in	Front	6/11/1992
5	7336906031	MICHELINAS ZAP MAC N CHEESE ENTR	8.00OZ	1	K1	12	22	1.83	5.70 in	7.15 in	1.35 in	Front	12/9/1996
6	7336907024	MICHELINAS ZAP MACARONI N CHEESE	7.50OZ	1	K2	12	22	1.83	5.70 in	7.15 in	1.35 in	Front	10/20/2009
7	7336907063	MICHELINAS ZAP PIZZA SNACKS	5.00OZ	1	K2	12	22	1.83	5.70 in	7.15 in	1.35 in	Front	8/6/2008
8	71785447001	CHILIS CHICKEN FAJITA RICE BOWL	10.00OZ	1	K1	8	18	2.25	5.88 in	7.35 in	1.74 in	Front	4/22/2014
9	71785447014	CHILIS CHICKEN ALFREDO CAJUN STY	10.00OZ	1	K1	8	18	2.25	5.88 in	7.35 in	1.74 in	Front	4/22/2014
10	65827620220	HUNGRY MAN BEEF STEAK CHOPPED	15.00OZ	1	K2	8	15	1.88	8.00 in	10.00 in	1.60 in	Front	10/7/2010
11	5100006283	HUNGRY MAN PORK BONELESS DINNER	16.00OZ	1	K2	8	15	1.88	8.00 in	10.00 in	1.60 in	Front	2/19/2010
12	2113150126	MARIE CALLENDER BEEF POT PIE	16.00OZ	2	K1	12	30	2.50	5.80 in	5.85 in	2.25 in	Front	5/29/2012
13	2113150125	MARIE CALLENDER TURKEY POT PIE	16.00OZ	1	K2	12	15	1.25	5.80 in	5.85 in	2.25 in	Front	5/29/2012
14	2113150127	MARIE CALLENDER CHKN POT PIE W CREAM...	16.00OZ	1	K2	12	15	1.25	5.80 in	5.85 in	2.25 in	Front	5/18/2015
15	2113150124	MARIE CALLENDER CHICKEN POT PIE	16.00OZ	2	K1	12	30	2.50	5.80 in	5.85 in	2.25 in	Front	5/29/2012
16	2113130104	MARIE CALLENDER POT PIE CHICKEN 4 CT	40.00OZ	1	K1	6	8	1.33	5.35 in	10.70 in	3.85 in	Top	7/27/2005
17	1380010172	STOUFFERS ROAST TURKEY	9.62OZ	1	K2	12	24	2.00	5.90 in	7.40 in	1.25 in	Front	3/3/2009
18	1380010171	STOUFFERS CHICKEN PARMIGIANA	12.00OZ	1	K2	12	24	2.00	5.90 in	7.40 in	1.25 in	Front	4/18/2012
19	1380010201	STOUFFERS FISH FILET	9.00OZ	1	K2	12	24	2.00	5.90 in	7.40 in	1.25 in	Front	3/3/2009
20	1380010635	STOUFFERS POT PIE CHICKEN WHT MT	16.00OZ	1	K1	12	14	1.17	5.95 in	6.00 in	2.32 in	Front	11/5/2007
21	1380062742	STOUFFERS WHITE CHEDDAR MAC & CHEESE	12.00OZ	1	K1	12	24	2.00	5.10 in	6.78 in	1.20 in	Front	5/18/2015