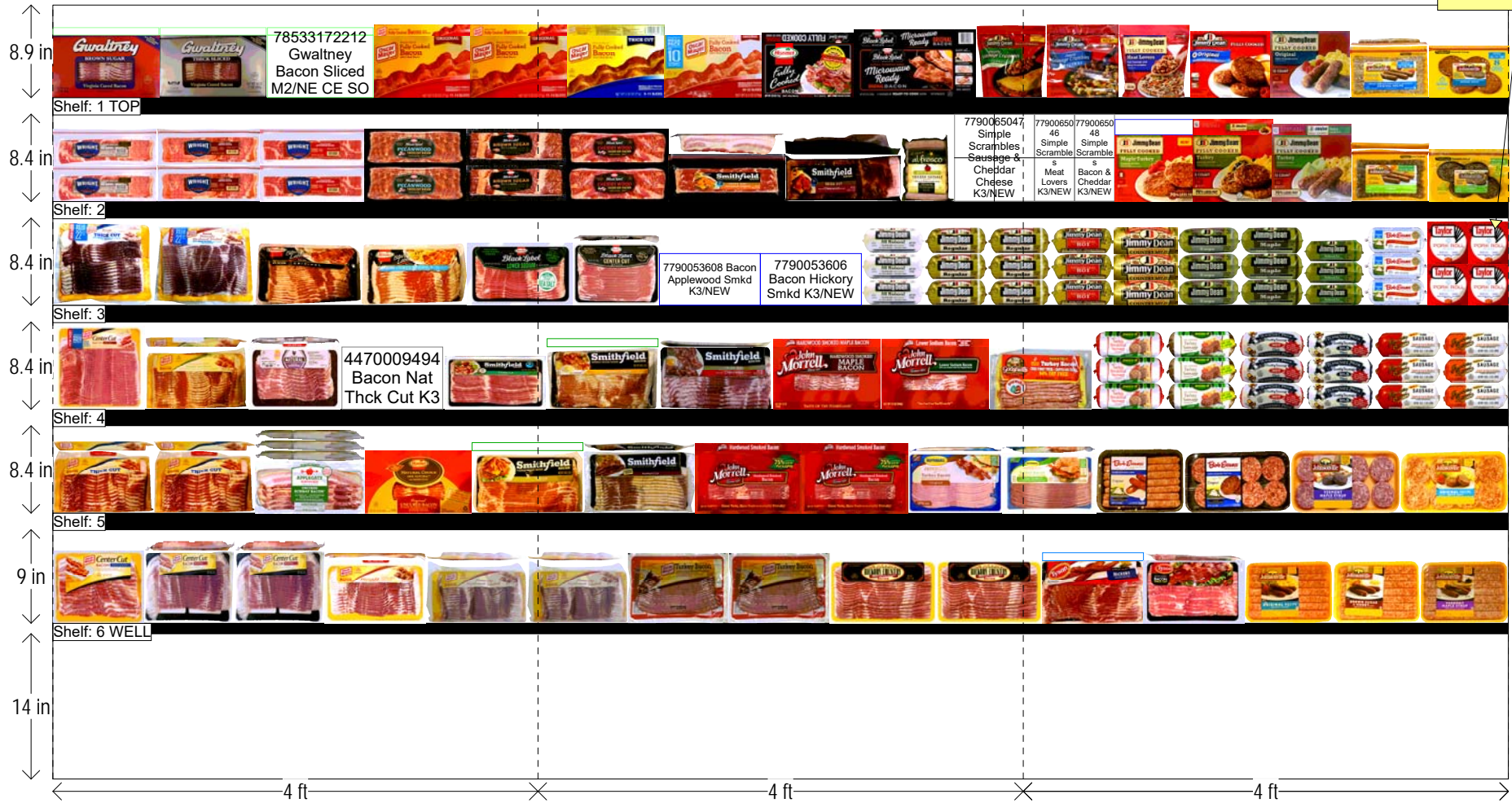


# SEGMENT 1 - BREAKFAST MEAT - 12 FT SECTION

HQ DeCA PLANOGRAM - CHILL MEAT 60 FT

FOR CLASS 3, 4 AND 5 STORES - NORTHEAST CENTRAL SOUTHERN MARKETING AREA

4120801060  
Taylor Sausag  
R1 NE Only



Left-right

HQ DeCA/MBU PLANOGRAM APPROVED BY CATEGORY MGR CHARLIE DOWLEN

20 June 2017

FACINGS MAY BE ADJUSTED TO ACCOMMODATE LOCAL ITEMS (END OF FLOW). FACINGS MAY BE ADJUSTED TO MEET CUSTOMER DEMAND-CAO MUST BE INVOLVED IN THE PROCESS ALONG WITH STORE MANAGEMENT APPROVAL. ITEM POSITIONS MUST NOT BE CHANGED AT ANY TIME.

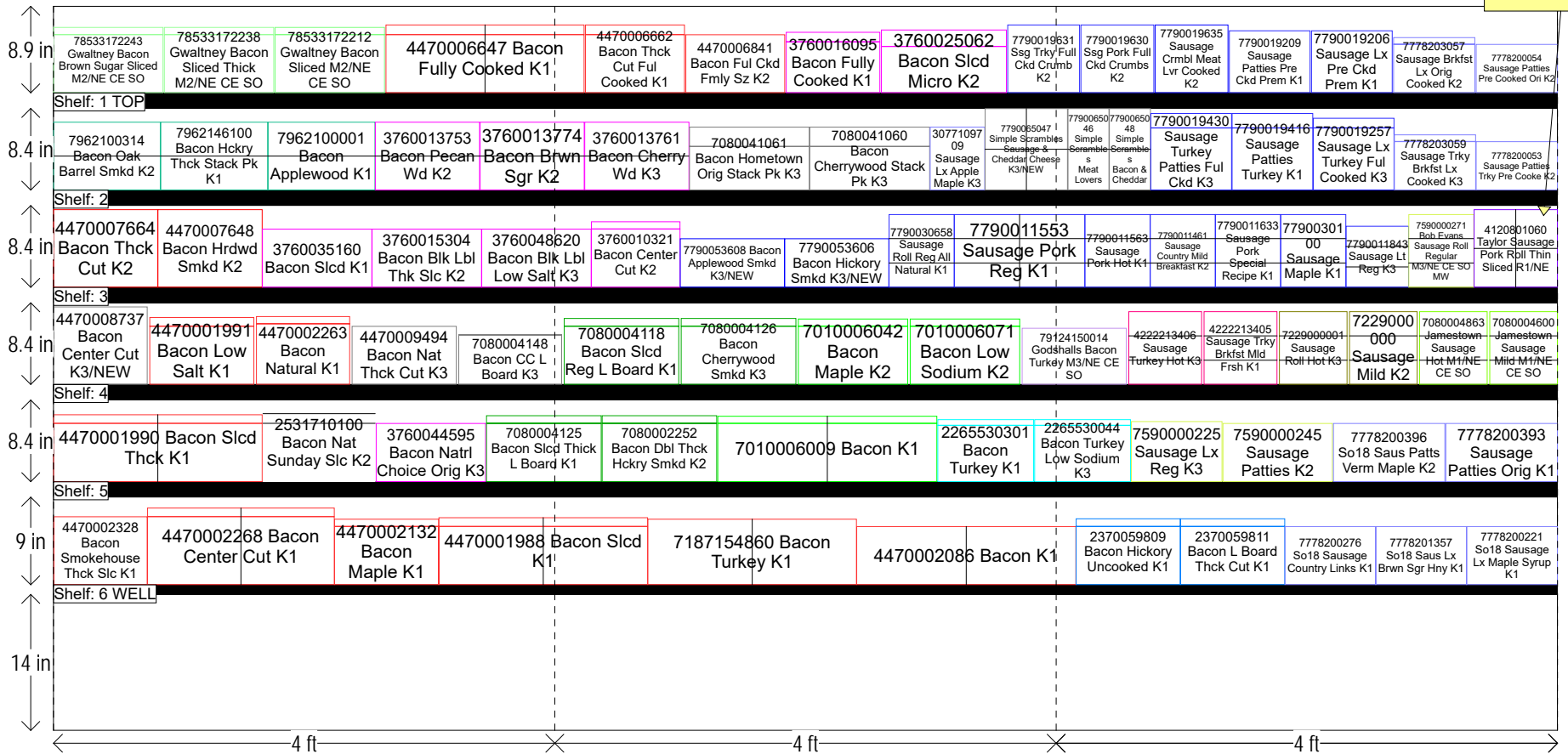
Chill Meat  
BRKFST M-SEG 1-  
12K345-NW.psa

# SEGMENT 1 - BREAKFAST MEAT - 12 FT SECTION

## HQ DeCA PLANOGRAM - CHILL MEAT 60 FT

FOR CLASS 3, 4 AND 5 STORES - NORTHEAST CENTRAL SOUTHERN MARKETING AREA

4120801060  
Taylor Sausage  
R1 NE Only



Left-right	HQ DeCA/MBU PLANOGRAM APPROVED BY CATEGORY MGR CHARLIE DOWLEN
20 June 2017	FACINGS MAY BE ADJUSTED TO ACCOMMODATE LOCAL ITEMS (END OF FLOW). FACINGS MAY BE ADJUSTED TO MEET CUSTOMER DEMAND-CAO MUST BE INVOLVED IN THE PROCESS ALONG WITH STORE MANAGEMENT APPROVAL. ITEM POSITIONS MUST NOT BE CHANGED AT ANY TIME.
Chill Meat BRKFST M-SEG 1-12K345-NW.psa	

# SEGMENT 1 - BREAKFAST MEAT - 12 FT SECTION

SHELF:1 TOP		WIDTH:144 in	MERCH HEIGHT:7.00 in	DEPTH:20 in			SPACE AVAIL:1.50 in						Orientation	Add Date	
Locatio...	UPC	Brand	NAME	SIZE	UOM	NOF	RSL	CS/PK	PACKOUT	Cases	H	W	D	Orientation	Add Date
1	78533172243	GWALTNEY	Gwaltney Bacon Brown Sugar Sliced	16.00OZ		1	M2/NE C...	24	29	1.21	6.00 in	10.50 in	0.75 in	Front	
2	78533172238	GWALTNEY	Gwaltney Bacon Sliced Thick	16.00OZ		1	M2/NE C...	24	29	1.21	6.00 in	10.50 in	0.75 in	Front	
3	78533172212	GWALTNEY	Gwaltney Bacon Sliced	16.00oz		1	M2/NE C...	24	29	1.21	6.00 in	10.50 in	0.75 in	Front	
4	4470006647	OSCARMAYER	Bacon Fully Cooked	2.52OZ		2	K1	12	46	3.83	6.00 in	9.50 in	1.00 in	Front	
5	4470006662	OSCARMAYER	Bacon Thck Cut Ful Cooked	8.30OZ		1	K1	12	23	1.92	6.00 in	9.50 in	1.00 in	Front	
6	4470006841	OSCARMAYER	Bacon Ful Ckd Fmly Sz	6.30OZ		1	K2	10	15	1.50	6.00 in	9.50 in	1.30 in	Front	
7	3760016095	OLDSMOKEHO	Bacon Fully Cooked	2.52OZ		1	K1	12	23	1.92	5.25 in	9.00 in	1.00 in	Front	
8	3760025062	HORMEL	Bacon Slcd Micro	12.00OZ		1	K2	8	15	1.88	4.78 in	12.00 in	1.71 in	Front	
9	7790019631	JIMMYDEAN	Ssg Trky Full Ckd Crumb	9.60OZ		1	K2	6	16	2.67	7.00 in	6.90 in	1.22 in	Front	
10	7790019630	JIMMYDEAN	Ssg Pork Full Ckd Crumbs	9.60OZ		1	K2	6	16	2.67	7.00 in	7.00 in	1.22 in	Front	
11	7790019635	JIMMYDEAN	Sausage Crmb Meat Lvr Cooked	9.60OZ		1	K2	6	16	2.67	7.00 in	7.00 in	1.22 in	Front	
12	7790019209	JIMMYDEAN	Sausage Patties Pre Ckd Prem	10.00OZ		1	K1	8	13	1.63	6.40 in	7.75 in	1.50 in	Front	
13	7790019206	JIMMYDEAN	Sausage Lx Pre Ckd Prem	9.60OZ		1	K1	8	20	2.50	6.40 in	7.75 in	1.00 in	Front	
14	7778203057	JOHNSONVIL	Sausage Brkfst Lx Orig Cooked	9.60oz		1	K2	10	32	3.20	5.00 in	7.80 in	0.70 in	Front	
15	7778200054	JOHNSONVIL	Sausage Patties Pre Cooked Ori	9.60OZ		1	K2	10	28	2.80	5.00 in	7.80 in	0.70 in	Front	

SHELF:2		WIDTH:144 in	MERCH HEIGHT:9.00 in	DEPTH:20 in			SPACE AVAIL:0.35 in						Orientation	Add Date	
Locatio...	UPC	Brand	NAME	SIZE	UOM	NOF	RSL	CS/PK	PACKOUT	Cases	H	W	D	Orientation	Add Date
1	7962100314	WRIGHT	Bacon Oak Barrel Smkd	24.00OZ		1	K2	12	26	2.17	3.50 in	10.25 in	1.50 in	Front	
2	7962146100	WRIGHTBRAN	Bacon Hckry Thck Stack Pk	24.00OZ		1	K1	12	26	2.17	3.50 in	10.25 in	1.50 in	Front	
3	7962100001	WRIGHTBRAN	Bacon Applewood	24.00OZ		1	K1	12	26	2.17	3.50 in	10.25 in	1.50 in	Front	
4	3760013753	BLACKLABEL	Bacon Pecan Wd	24.00OZ		1	K2	12	26	2.17	3.50 in	10.00 in	1.50 in	Front	
5	3760013774	BLACKLABEL	Bacon Brwn Sgr	24.00OZ		1	K2	12	26	2.17	3.50 in	10.00 in	1.50 in	Front	
6	3760013761	BLACKLABEL	Bacon Cherry Wd	24.00OZ		1	K3	12	26	2.17	3.50 in	10.00 in	1.50 in	Front	
7	7080041061	SMITHFIELD	Bacon Hometown Orig Stack Pk	24.00OZ		1	K3	12	14	1.17	4.50 in	11.50 in	2.00 in	Front	
8	7080041060	SMITHFIELD	Bacon Cherrywood Stack Pk	24.00OZ		1	K3	12	14	1.17	4.50 in	11.50 in	2.00 in	Front	
9	3077109709	ALFRESCO	Sausage Lx Apple Maple	8.00OZ		1	K3	10	26	2.60	6.50 in	5.25 in	0.75 in	Front	
10	7790065047	JIMMYDEAN	Simple Scrambles Sausage & Cheddar Cheese	5.35OZ		2	K3/NEW	6	20	3.33	4.20 in	3.95 in	3.95 in	Front	5/11/2017
11	7790065046	JIMMYDEAN	Simple Scrambles Meat Lovers	5.35OZ		1	K3/NEW	6	10	1.67	4.20 in	3.95 in	3.95 in	Front	5/11/2017
12	7790065048	JIMMYDEAN	Simple Scrambles Bacon & Cheddar	5.35OZ		1	K3/NEW	6	10	1.67	4.20 in	3.95 in	3.95 in	Front	5/11/2017
13	7790019430	JIMMYDEAN	Sausage Turkey Patties Ful Ckd	9.60OZ		1	K3	8	16	2.00	6.40 in	7.75 in	1.50 in	Front	
14	7790019416	JIMMYDEAN	Sausage Patties Turkey	9.60OZ		1	K1	8	16	2.00	6.40 in	7.75 in	1.50 in	Front	
15	7790019257	JIMMYDEAN	Sausage Lx Turkey Ful Cooked	9.60OZ		1	K3	8	23	2.88	6.40 in	7.75 in	1.00 in	Front	
16	7778203059	JOHNSONVIL	Sausage Trky Brkfst Lx Cooked	9.60oz		1	K3	10	32	3.20	5.00 in	7.80 in	0.70 in	Front	
17	7778200053	JOHNSONVIL	Sausage Patties Trky Pre Cooke	9.60OZ		1	K2	10	28	2.80	5.00 in	7.80 in	0.70 in	Front	

SHELF:3		WIDTH:144 in	MERCH HEIGHT:8.00 in	DEPTH:20 in			SPACE AVAIL:0.00 in						Orientation	Add Date	
Locatio...	UPC	Brand	NAME	SIZE	UOM	NOF	RSL	CS/PK	PACKOUT	Cases	H	W	D	Orientation	Add Date
1	4470007664	OSCARMAYER	Bacon Thck Cut	22.00OZ		1	K2	8	20	2.50	8.00 in	10.00 in	1.00 in	Front	
2	4470007648	OSCARMAYER	Bacon Hrdwd Smkd	22.00OZ		1	K2	8	20	2.50	8.00 in	10.00 in	1.00 in	Front	
3	3760035160	BLACKLABEL	Bacon Slcd	16.00OZ		1	K1	24	26	1.08	6.00 in	10.50 in	0.75 in	Front	
4	3760015304	BLACKLABEL	Bacon Blk Lbl Thk Slc	16.00OZ		1	K2	12	26	2.17	6.00 in	10.50 in	0.75 in	Front	
5	3760048620	BLACKLABEL	Bacon Blk Lbl Low Salt	16.00OZ		1	K3	12	26	2.17	6.00 in	10.50 in	0.75 in	Front	
6	3760010321	BLACKLABEL	Bacon Center Cut	12.00OZ		1	K2	16	29	1.81	6.00 in	8.50 in	0.75 in	Front	
7	7790053608	JIMMYDEAN	Bacon Applewood Smkd	12.00OZ		1	K3/NEW	16	30	1.88	5.00 in	10.00 in	0.65 in	Front	3/16/2017
8	7790053606	JIMMYDEAN	Bacon Hickory Smkd	12.00OZ		1	K3/NEW	16	30	1.88	5.00 in	10.00 in	0.65 in	Front	3/16/2017
9	7790030658	JIMMYDEAN	Sausage Roll Reg All Natural	16.00OZ		1	K1	12	24	2.00	2.50 in	6.25 in	2.50 in	Front	
10	7790011553	JIMMYDEAN	Sausage Pork Reg	16.00OZ		2	K1	12	48	4.00	2.50 in	6.25 in	2.50 in	Front	
11	7790011563	JIMMYDEAN	Sausage Pork Hot	16.00OZ		1	K1	12	24	2.00	2.50 in	6.25 in	2.50 in	Front	
12	7790011461	JIMMYDEAN	Sausage Country Mild Breakfast	16.00OZ		1	K2	12	24	2.00	2.50 in	6.25 in	2.50 in	Front	
13	7790011633	JIMMYDEAN	Sausage Pork Special Recipe	16.00OZ		1	K1	12	24	2.00	2.50 in	6.25 in	2.50 in	Front	
14	7790030100	JIMMYDEAN	Sausage Maple	16.00OZ		1	K1	12	24	2.00	2.50 in	6.25 in	2.50 in	Front	
15	7790011843	JIMMYDEAN	Sausage Lt Reg	12.00OZ		1	K3	12	27	2.25	2.10 in	6.00 in	2.10 in	Front	
16	7590000271	BOB EVANS	Bob Evans Sausage Roll Regular	16.00OZ		1	M3/NE C...	12	24	2.00	2.50 in	6.25 in	2.50 in	Front	
17	4120801060	TAYLOR	Taylor Sausage Pork Roll Thin Sliced	6.00OZ		2	R1/NE	24	80	3.33	4.00 in	4.00 in	1.00 in	Front	

SHELF:4		WIDTH:144 in	MERCH HEIGHT:8.00 in	DEPTH:20 in			SPACE AVAIL:3.17 in						Orientation	Add Date	
Locatio...	UPC	Brand	NAME	SIZE	UOM	NOF	RSL	CS/PK	PACKOUT	Cases	H	W	D	Orientation	Add Date

# SEGMENT 1 - BREAKFAST MEAT - 12 FT SECTION

1	4470008737	OSCARMAYER	Bacon Center Cut	17.00OZ	1	K3/NEW	8	20	2.50	8.00 in	9.00 in	1.00 in	Front
2	4470001991	OSCARMAYER	Bacon Low Salt	16.00OZ	1	K1	12	25	2.08	6.00 in	10.00 in	0.90 in	Front
3	4470002263	OSCARMAYER	Bacon Natural	12.00OZ	1	K1	12	29	2.42	6.25 in	8.95 in	0.75 in	Front
4	4470009494	#N/A	Bacon Nat Thck Cut	12.00OZ	1	K3	12	31	2.58	6.00 in	10.00 in	0.63 in	Front
5	7080004148	SMITHFIELD	Bacon CC L Board	12.00OZ	1	K3	16	403	25.19	5.08 in	9.88 in	0.05 in	Front
6	7080004118	SMITHFIELD	Bacon Slcd Reg L Board	16.00OZ	1	K1	24	28	1.17	6.00 in	11.00 in	0.80 in	Front
7	7080004126	SMITHFIELD	Bacon Cherrywood Smkd	16.00OZ	1	K3	12	28	2.33	6.00 in	11.00 in	0.80 in	Front
8	7010006042	JOHNMORREL	Bacon Maple	12.00OZ	1	K2	16	29	1.81	6.00 in	10.50 in	0.75 in	Front
9	7010006071	JOHNMORREL	Bacon Low Sodium	12.00OZ	1	K2	16	29	1.81	6.00 in	10.50 in	0.75 in	Front
10	79124150014	GODSHALLS	Godshalls Bacon Turkey	12.00OZ	1	M3/NE C...	12	33	2.75	5.80 in	10.00 in	0.60 in	Front
11	4222213406	JENNIEO	Sausage Turkey Hot	16.00OZ	1	K3	12	24	2.00	2.50 in	7.00 in	2.50 in	Front
12	4222213405	JENNIEO	Sausage Trky Brkfst Mld Frsh	16.00OZ	1	K1	12	24	2.00	2.50 in	7.00 in	2.50 in	Front
13	7229000001	TENNESSEEP	Sausage Roll Hot	16.00OZ	1	K3	12	24	2.00	2.50 in	6.50 in	2.50 in	Front
14	7229000000	TENNESSEEP	Sausage Mild	16.00OZ	1	K2	12	24	2.00	2.50 in	6.50 in	2.50 in	Front
15	7080004863	SMITHFIELD	Jamestown Sausage Hot	16.00OZ	1	M1/NE C...	12	24	2.00	2.50 in	6.50 in	2.50 in	Front
16	7080004600	SMITHFIELD	Jamestown Sausage Mild	16.00OZ	1	M1/NE C...	12	24	2.00	2.50 in	6.50 in	2.50 in	Front

SHELF:5		WIDTH:144 in		MERCH HEIGHT:10.00 in		DEPTH:20 in		SPACE AVAIL:0.75 in							
Locatio...	UPC	Brand	NAME	SIZE	UOM	NOF	RSL	CS/PK	PACKOUT	Cases	H	W	D	Orientation	Add Date
1	4470001990	OSCARMAYER	Bacon Slcd Thck	16.00OZ		2	K1	12	50	4.17	6.00 in	10.00 in	0.90 in	Front	
2	2531710100	APPLEGATEF	Bacon Nat Sunday Slc	8.00oz		1	K2	12	32	2.67	5.00 in	10.75 in	1.00 in	Front	
3	3760044595	NATURALCHO	Bacon Natrl Choice Orig	12.00OZ		1	K3	12	31	2.58	6.00 in	10.50 in	0.63 in	Front	
4	7080004125	SMITHFIELD	Bacon Slcd Thick L Board	16.00OZ		1	K1	24	28	1.17	6.00 in	11.00 in	0.80 in	Front	
5	7080002252	SMITHFIELD	Bacon Dbl Thck Hckry Smkd	16.00OZ		1	K2	24	28	1.17	6.00 in	11.00 in	0.80 in	Front	
6	7010006009	JOHNMORREL	Bacon	12.00OZ		2	K1	32	58	1.81	6.00 in	10.50 in	0.75 in	Front	
7	2265530301	BUTTERBALL	Bacon Turkey	12.00OZ		1	K1	24	36	1.50	5.80 in	9.20 in	0.60 in	Front	
8	2265530044	BUTTERBALL	Bacon Turkey Low Sodium	12.00OZ		1	K3	12	36	3.00	5.80 in	9.20 in	0.60 in	Front	
9	7590000225	BOBEVANS	Sausage Lx Reg	12.00OZ		1	K3	8	25	3.13	6.20 in	8.70 in	0.80 in	Front	
10	7590000245	BOBEVANS	Sausage Patties	12.00OZ		1	K2	8	26	3.25	6.00 in	10.50 in	0.75 in	Front	
11	7778200396	JOHNSONVIL	So18 Saus Patts Verm Maple	12.00OZ		1	K2	8	26	3.25	6.00 in	10.70 in	0.75 in	Front	
12	7778200393	JOHNSONVIL	Sausage Patties Orig	12.00OZ		1	K1	8	25	3.13	6.00 in	10.70 in	0.80 in	Front	

SHELF:6 WELL		WIDTH:144 in		MERCH HEIGHT:8.00 in		DEPTH:30 in		SPACE AVAIL:0.05 in							
Locatio...	UPC	Brand	NAME	SIZE	UOM	NOF	RSL	CS/PK	PACKOUT	Cases	H	W	D	Orientation	Add Date
1	4470002328	OSCARMAYER	Bacon Smokehouse Thck Slc	12.00OZ		1	K1	16	33	2.06	7.00 in	8.95 in	0.90 in	Front	
2	4470002268	OSCARMAYER	Bacon Center Cut	12.00OZ		2	K1	16	74	4.63	7.00 in	8.95 in	0.90 in	Front	
3	4470002132	OSCARMAYER	Bacon Maple	16.00OZ		1	K1	12	45	3.75	6.00 in	10.00 in	0.75 in	Front	
4	4470001988	OSCARMAYER	Bacon Slcd	16.00OZ		2	K1	24	76	3.17	6.00 in	10.00 in	0.90 in	Front	
5	7187154860	OSCARMAYER	Bacon Turkey	12.00OZ		2	K1	16	74	4.63	6.75 in	10.00 in	0.80 in	Front	
6	4470002086	HICKORYCOU	Bacon	16.00OZ		2	K1	12	60	5.00	6.00 in	10.50 in	1.00 in	Front	
7	2370059809	TYSON	Bacon Hickory Uncooked	16.00OZ		1	K1	12	42	3.50	6.00 in	10.00 in	0.80 in	Front	
8	2370059811	TYSON	Bacon L Board Thck Cut	16.00OZ		1	K1	12	42	3.50	6.00 in	10.00 in	0.80 in	Front	
9	7778200276	JOHNSONVIL	So18 Sausage Country Links	12.00OZ		1	K1	12	37	3.08	6.00 in	8.70 in	0.80 in	Front	
10	7778201357	JOHNSONVIL	So18 Saus Lx Brwn Sgr Hny	12.00OZ		1	K1	12	37	3.08	6.00 in	8.70 in	0.80 in	Front	
11	7778200221	JOHNSONVIL	So18 Sausage Lx Maple Syrup	12.00OZ		1	K1	12	37	3.08	6.00 in	8.70 in	0.81 in	Front	